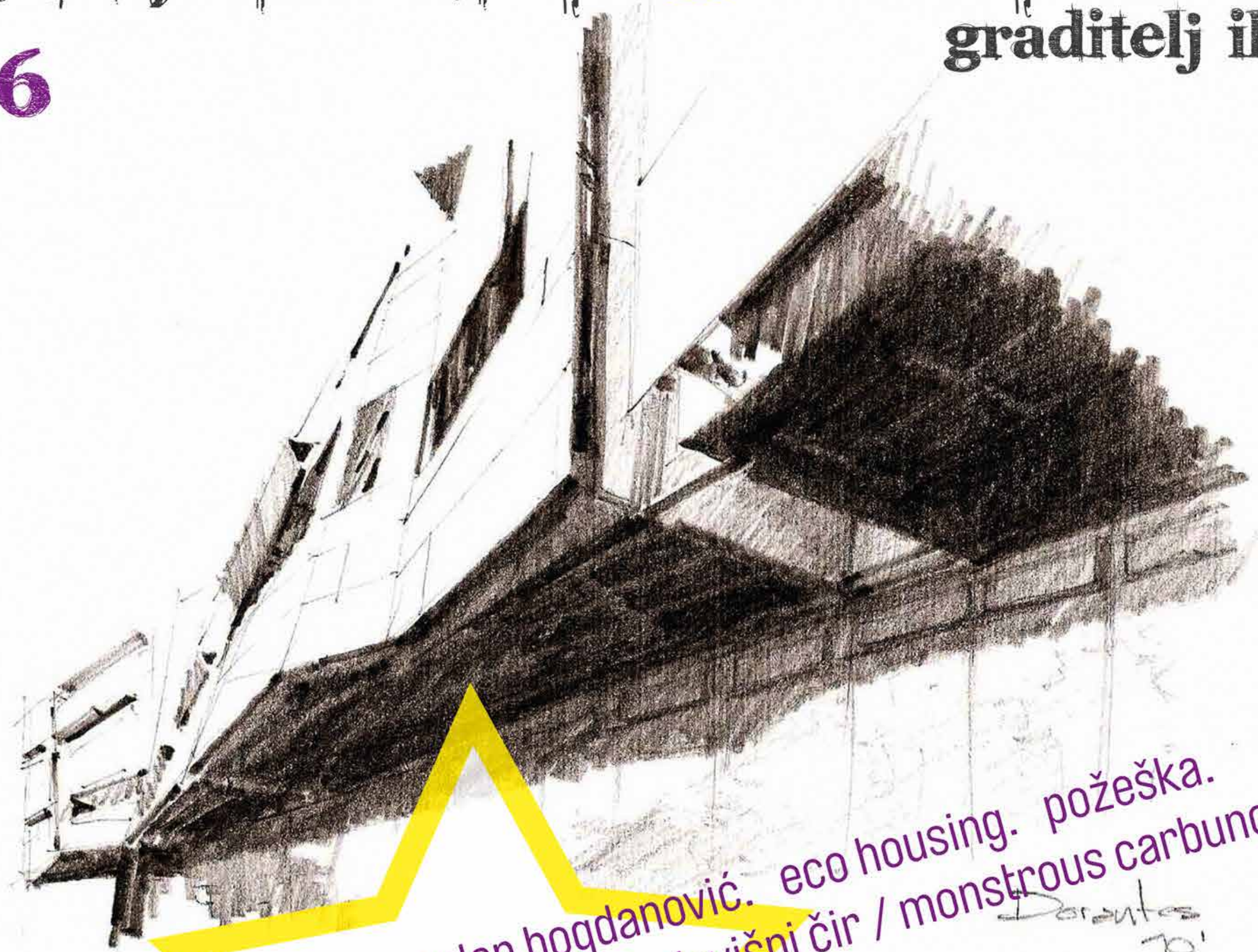


arhitekt^okton

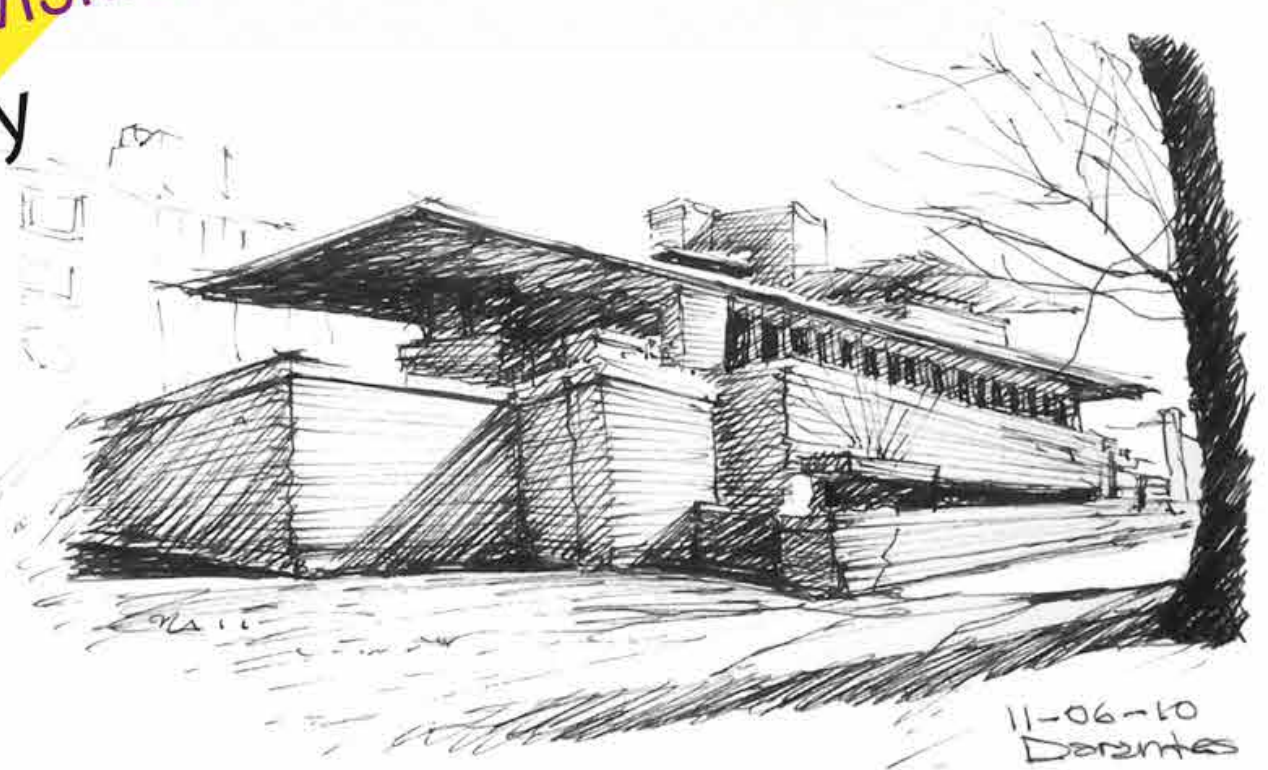
builder of illusions

graditelj iluzija

06



taller perspectiva. bogdan bogdanović. eco housing. požeška.
intervju bjarke ingels. biovallo. čudovišni čir / monstrous carbuncle
nemačka ambasada / german embassy



ISSN 1821-2476

Inženjerska
Komora
Srbije





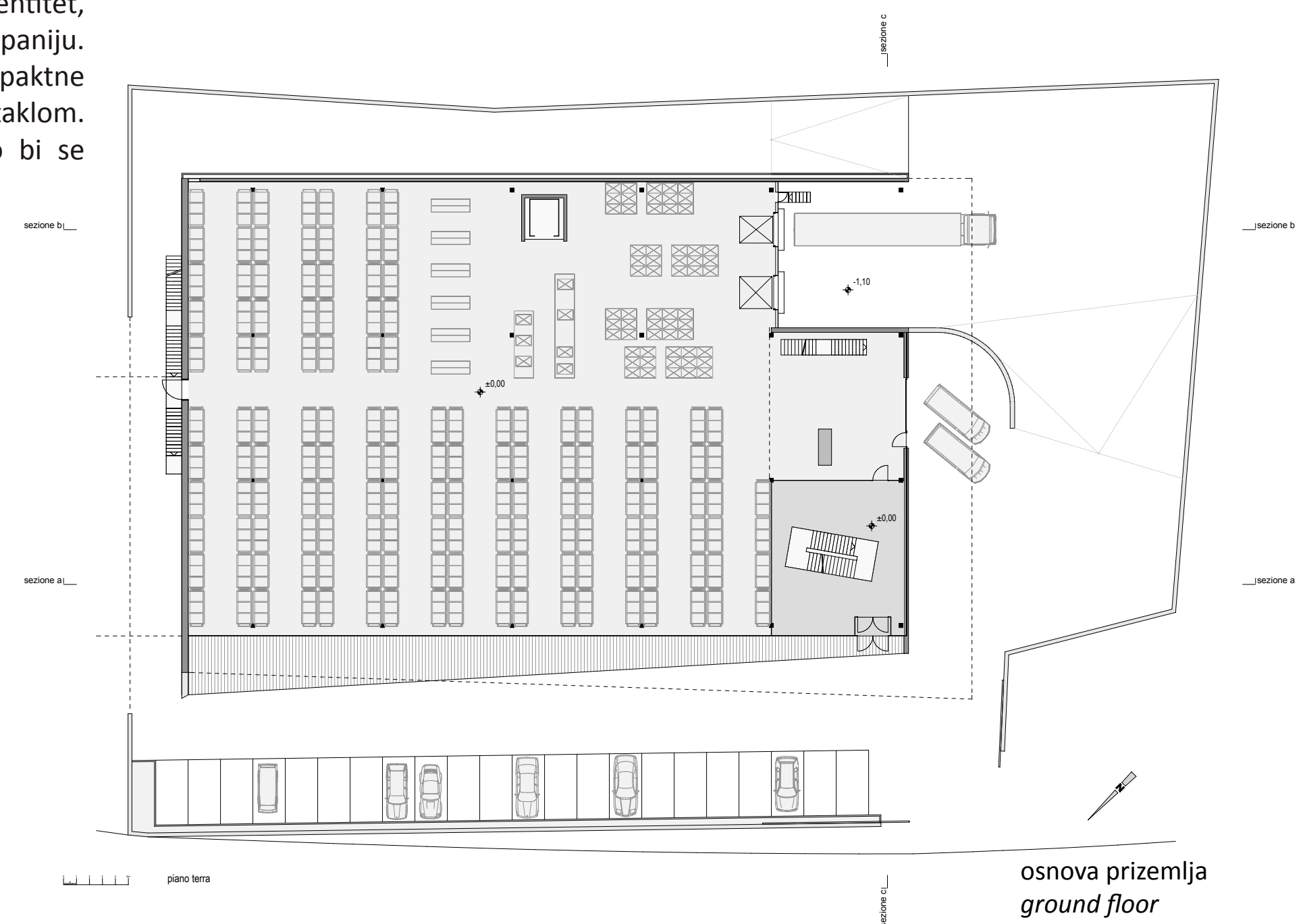
Italijanski biro MONOVOLUME (pored Frančeska Gattija čiji smo intervju, dat za naš časopis, objavili u prošlom broju) izabrali smo da objavimo iz grupe italijanskih arhitekata objavljenih u "top 10 ispod 40" u broju 4. Ono što nam se najviše dopalo jeste njihova karakteristika da podjednako dobro tretiraju eksterijer i formu, kao i enterijer objekta, gde se ne može definisati da li je po pitanju uspešnosti dominantan enterijer ili spoljašnja arhitektura. Takođe nam se dopala i činjenica što smo bili u mogućnosti da objavimo fotografije njihovih izvedenih objekata, što je kuriozitet kod mlađih arhitekata koji u konkurenciji za nagrade za lično ostvarenje uglavnom ulaze sa neizvedenim projektima i trodimenzionalnim prikazima.

We selected an Italian bureau MONOVOLUME for publishing (apart from Francesco Gatti whose interview we published in previous number) out of the Italian group of architects published in "top 10 below 40", within issue no. 4. The thing we liked the most is their characteristics to treat both exterior and form equally good as well as the object's interior where one cannot define whether interior or the object's architecture is dominant in light of efficiency. We also liked the fact for being in opportunity to publish the photos of their constructed objects, which is a curiosity with younger architects who usually compete for the personal accomplishment awards with not-constructed designs and three-dimensional presentation.

Photographer: Oskar Da Riz

The „rothoblaas“ office is a large-scale commercial operation specializing in assembling systems and power tools for the woodworking industry. Warehouse and commissioning are situated on the ground floor whereas administration, a meeting room and a showroom can be found on the upper floor. The aim of the project was to create a compact building with a high level of recognition. The building as corporate identity of the enterprise; contemporary and representative of the company. This has lead to a functional, compact structural shell, provided with a glass envelope. The main building material employed is wood in order to show the own products.

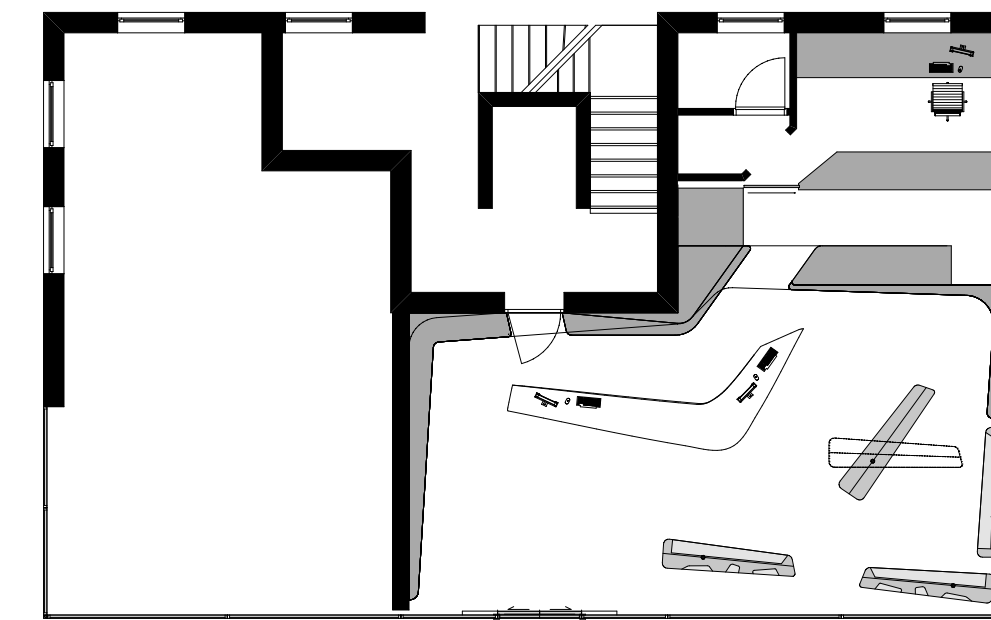
“Rothoblaas” je kompanija specijalizovana za sklapanje sistema i električnih alata za drvnu industriju. Skladište i prodaja su smešteni u prizemlju pored administracije, soba za sastanke i izložbeni salon su na gornjem spratu. Cilj projekta je bi da se stvori kompaktan vrlo prepoznatljiv objekat. Objekat kao korporacijski identitet, moderan i reprezentativan za kompaniju. Ovo je dovelo do funkcionalne, kompaktne konstruktivne opne, obezbeđene staklom. Materijal glavnog objekta je drvo, kako bi se pokazali sopstveni proizvodi.





Zadovoljavajući funkciju kao i estetiku u arhitektonskom smislu nije tako lako kada je u pitanju farmaceutska delatnost. Stvari očigledno drugačije stoje u južnom Tirolu. Ovde, u novom objektu u centru Epana, apoteka je izgrađena tako da ispunjava najviše dizajnerske standarde.

Iako je podna površina ograničena i štedljiva, veoma pažljiva organizacija prostora je bila najvažnija arhitektama iz Monovolume-a. Zbog toga se koncept prožima iz apotekarskog kabineta koji je svetinja svakog apotekara, odakle se linije pružaju i kroz nameštaj. Police oko ivice enterijera su upotrebljene da se ostvare značajne izložbene površine, čije horizontalne linije obuhvataju i vizuelno povećavaju prostor obezbeđujući mesto za posebno izrađen pult, koji izgleda kao da figurira kao dinamička fokalna tačka. Zbog svoje neobične veličine za seosku apoteku, ovo istovremeno omogućava pravilno savetovanje i maksimalnu diskreciju.



osnova
floor plan

Satisfying functional as well as aesthetic demands is not exactly easy for the pharmacy business, at least not in architectural terms. Things are apparently different in South Tyrol. Here, in a new building in the centre of Epan, pharmacy has been built that actually meets the highest design standards.

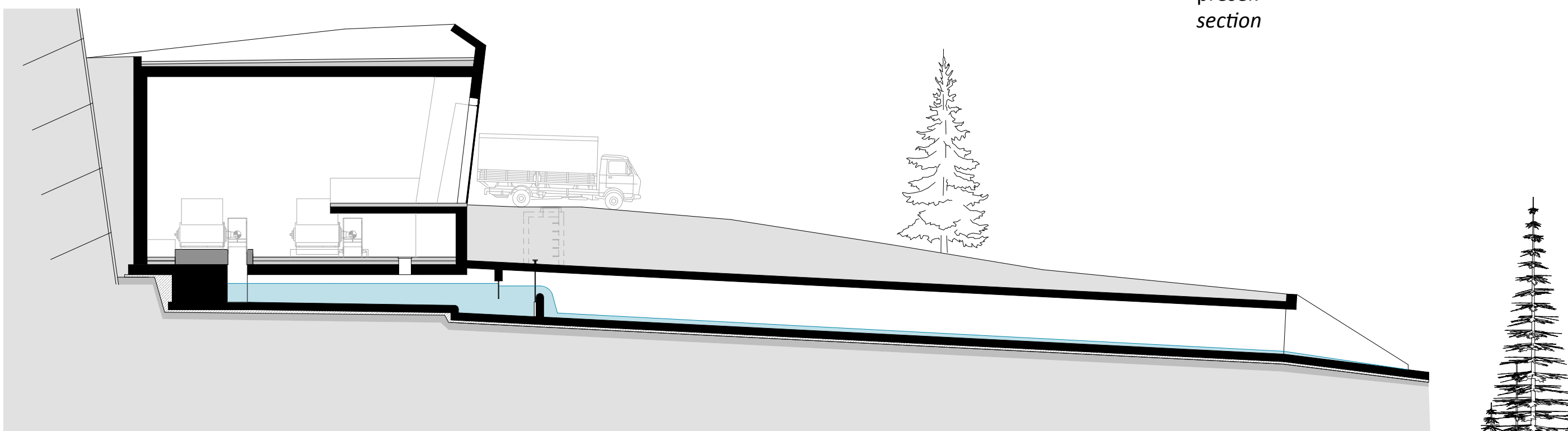
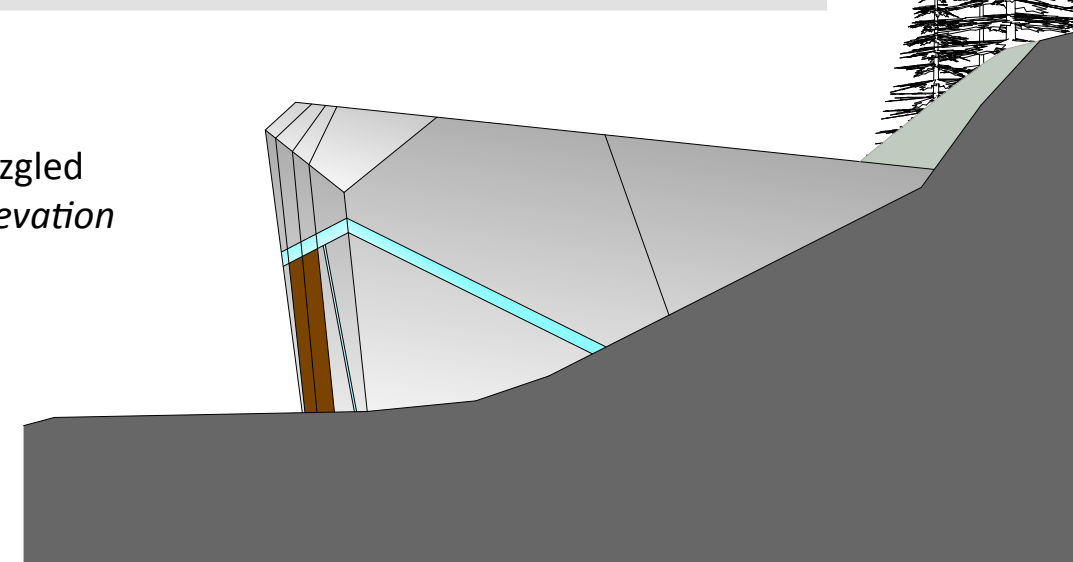
Due to the limited floor area, a thrifty, well considered use of space was essential for the executing architects from Monovolume. The concept therefore has its origins in every pharmacy's holy of holies, the pharmacist's cabinet, whose lines penetrate all the furnishings. Shelves around the edge of the interior were used to create copious presentation areas, whose horizontal lines embrace and visually enlarge the space and provide a setting for a tailor-made Corian counter, which seems to float as a dynamic focal point. Due to its unusual size for a village pharmacy, this simultaneously enables appropriate consulting activity and maximum discretion.





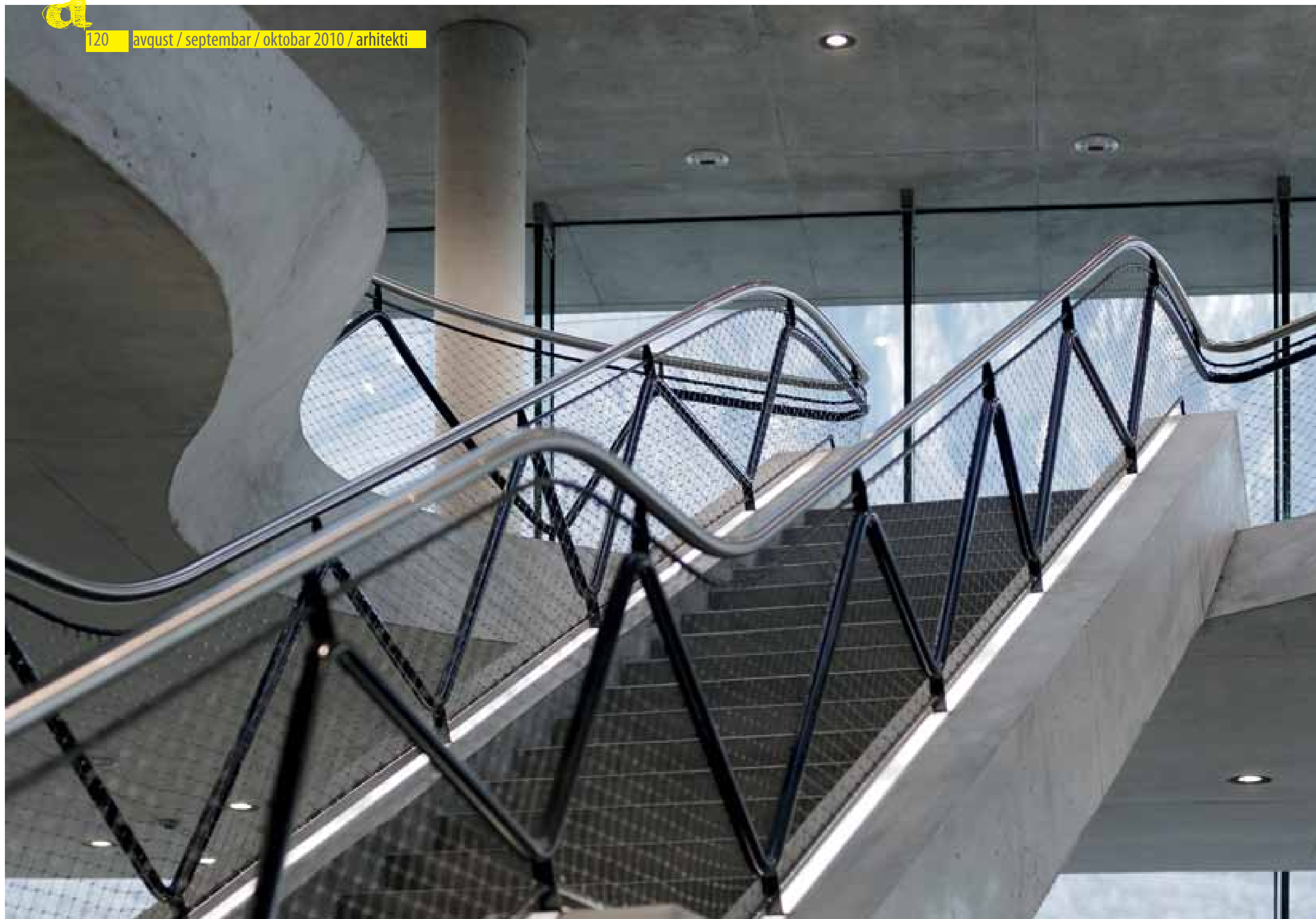
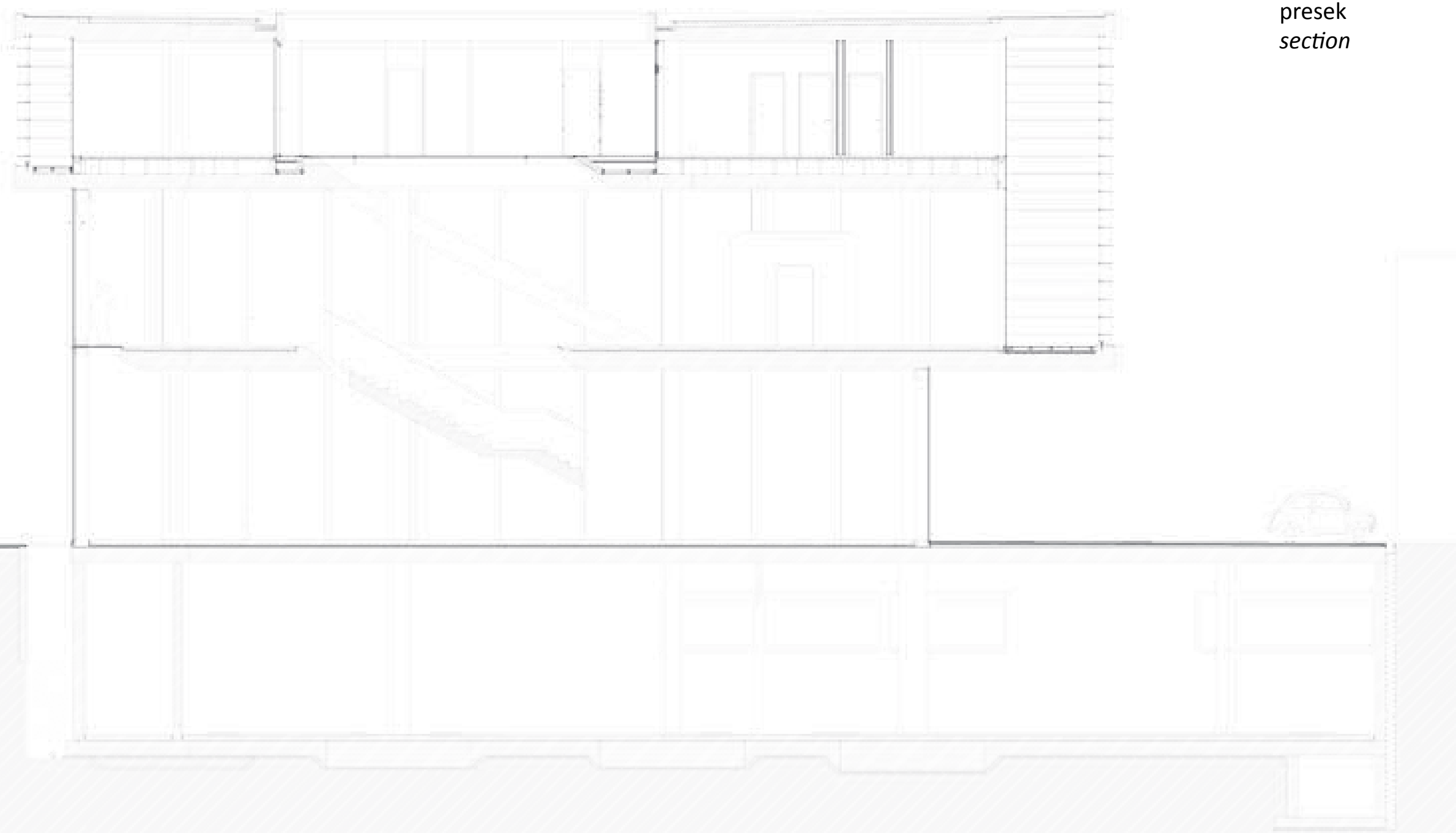
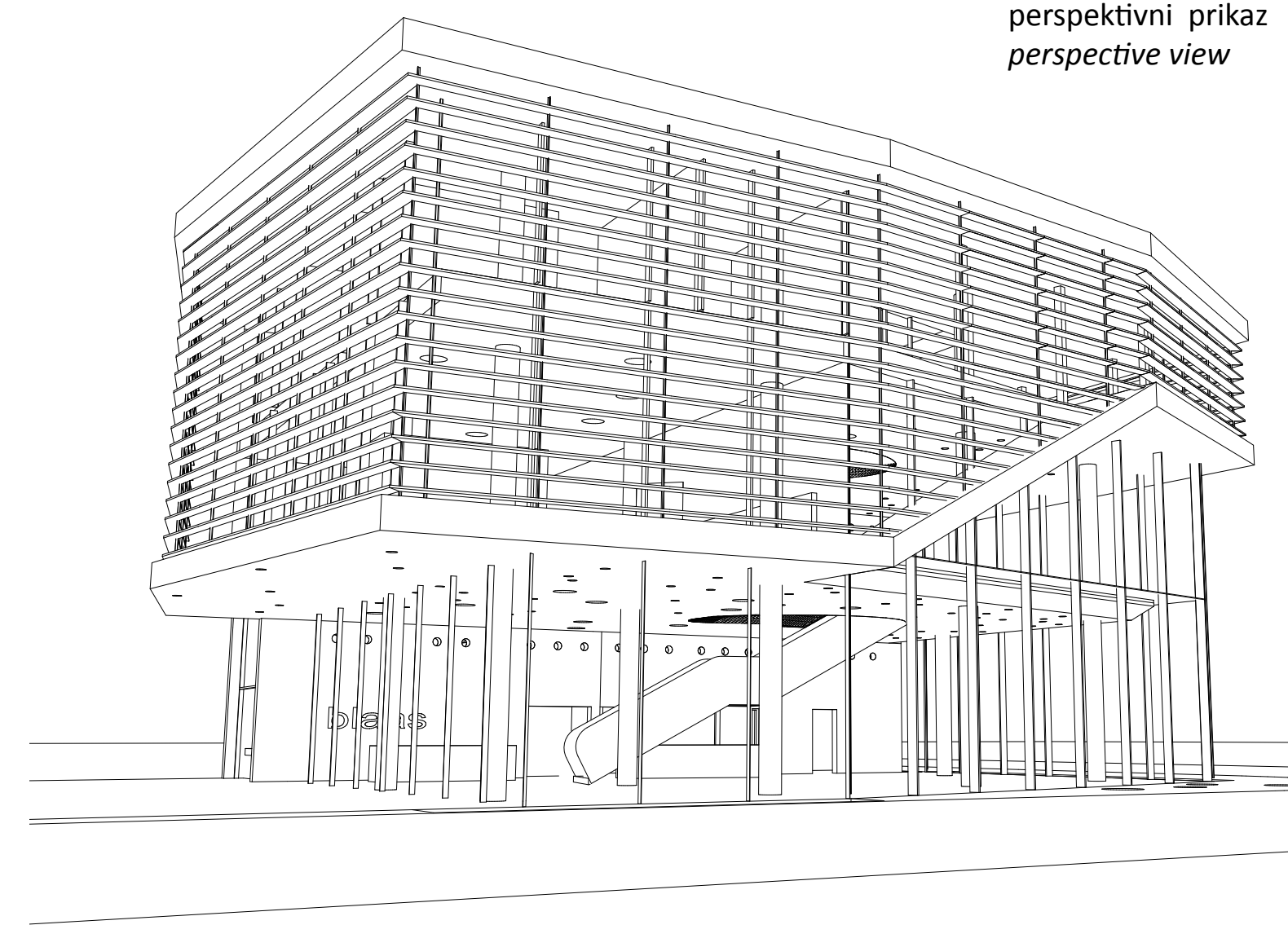
Projekat Vila P se bavi konverzijom i razvojem stana is 70-ih. Zahvaljujući mlađoj generaciji vlasnika, gornji sprat je bio modifikovan prema trenutnim potrebama života. Konceptija je otvorena, kuhinja i dnevna soba se međusobno prožimaju. Kupatilo se može odvojiti od dnevnog prostora širokim staklenim vratima. Napolju su arhitektae tragale za nekim otvorom. Panoramski pogled na vinograde je istaknut uz pomoć velike staklene fasade u dnevnoj sobi. Ovo je arhitektonska reakcija na jedinstvenu lokaciju ovog objekta.

The project Villa P concerns the conversion and development of an apartment house from the 70s. Thanks to a younger generation of owners, the upper floor has been adapted to current living needs. The plan has been opened, kitchen and living room passing into each other. The bedroom can be separated from the daytime area by a wide glass door. Also outwards architects have been looking for some opening. The panoramic view of the vineyards has been emphasized using a large/ glass façade in the living area. This is the architecture's reaction to the unique location of this building.

presek
sectionbočni izgled
side elevationparterno uređenje
ground floor

Stanica hidroelektrane je locirana blizu Winebah bruka u Dorflu, na nadmorskoj visini od 800 m. Delom je uzidan u padinu, zbog izuzetno malo građevinskog prostora. Projekat se sastoji iz jednostavne ali poligonarne forme, koja je prilagođena pejzažu i lokalnim uslovima. Stanica je sačinjena kao veštačka stena iskopana iz padine. Utisak je naglašen vrlo redukovanom upotrebom materijala (beton, staklo i čelik) u svojoj grubljoj formi, kao i "venama" koje presecaju formu. Ove "vene" su svetleće trake od slojevitog stakla i nalaze se oko celog objekta.

The hydroelectric power station is located near Winnebach brook in Dörfli, at 800 m. above sea level. It's partly built into the slope, since the building area was extremely reduced. The project consists in a simple but polygonal volume, which is formally adapted to the landscape and the local conditions. The station is conceived as an artificial rock quarried out of the slope. This sensation is underlined by a very reduced use of materials (concrete, glass and steel) in their rougher form, as well as by the "veins" which cross the volume. These "veins" consist of light bands of layered glass and run around the building.

izgled
elevationpresek
sectionperspektivni prikaz
perspective view

Kompanija Blaas u Bolzanu je specijalizovana u elektromehaniku. U novoj glavnoj zgradi kompanija je predstavila novi proizvodni program kao i servis.

U prizemlju objekta nalazi se prodaja, na prvom spratu je izložbeni prostor i servis. Opšti utisak objekta je homogena i zatvorena struktura. Ali ipak tu postoji razdvajanje između javnog i privatnog dela. Klijent može da primeti tu podelu već sa spoljašnje strane.

The company Blaas in Bolzano is specialized in electromechanics. In the new head office the company presents its new product range and offers repair service.

On the ground floor of the building there is the sales division, on the first floor the exposition area and the repair shop. All administration offices are located on the second floor. The overall impression of the structure is a homogenous and closed building. Nevertheless, there exists a separation between the public and the private sector. The client can perceive this clear and formal internal division already from the outside.