



10000 X

EUROPEAN
ARCHITECTURE

BRAUN



01



02

Blaas General Partnership

The company Blaas in Bolzano specializes in electro-mechanics. At its new headquarters, the company presents its new product range and offers repair services. On the ground floor of the building there is the sales division, with the showroom and the repair shop located on the first floor. All administration offices are situated on the second floor. The overall impression of the structure is a homogenous and closed building. Nevertheless, there is a clear and formal separation between the public and the private sector, which can be perceived from the outside. The glass façade on the northern side provides maximum visibility and transparency for the exhibition and sales area.

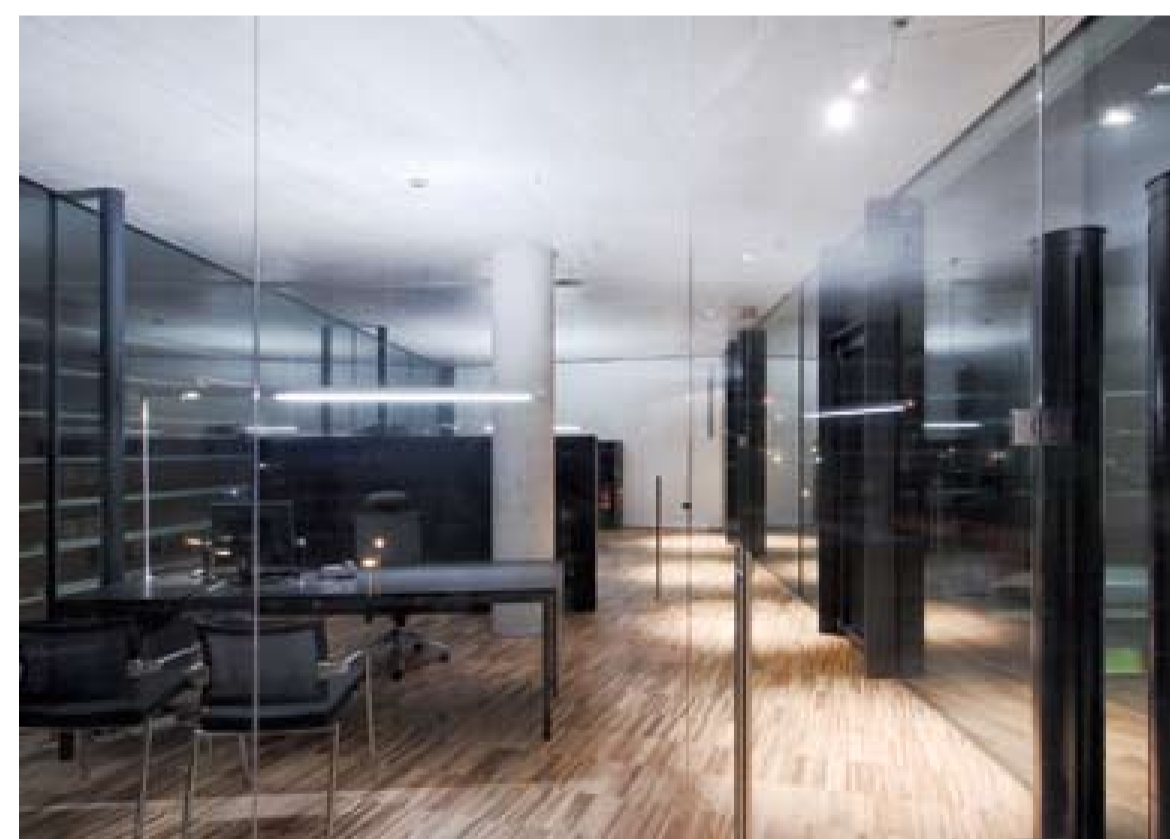
01 South view | 02 Main stairway with rooflight | 03 Roof garden with skylight | 04 Workplace | 05 Third floor office | 06 Third floor plan | 07 Main stairway



03



04



05



06



07



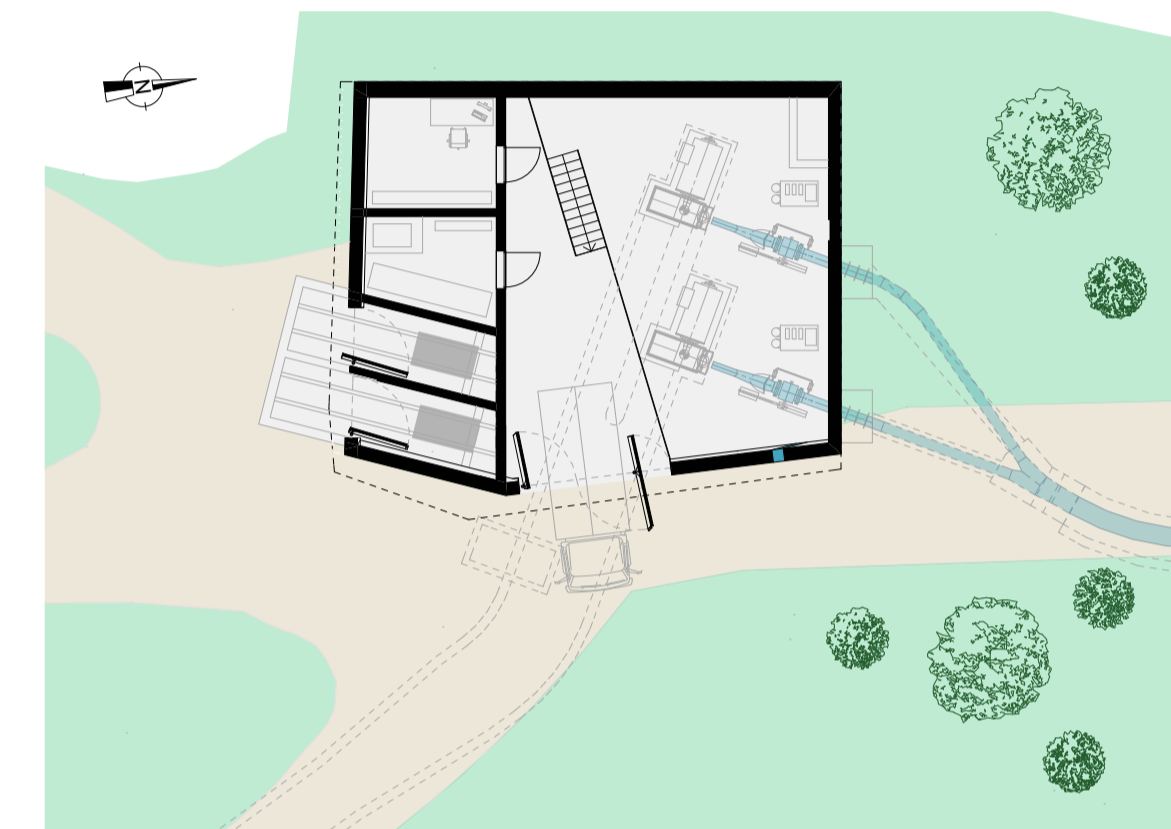
01



02



03



04

Hydroelectric Power Station Winnebach

This hydroelectric power station is partly built into the slope, significantly reducing the building area. The project consists of a simple polygonal volume, which is formally adapted to the landscape and the local conditions. The station is conceived as an artificial rock quarried out of the slope. The 'veins' that cross the building volume consist of light bands of layered glass and run around the building. The building has two stories, the basement shelters the generating set, the distributing unit and the control tank as well as a storage room. The ground floor offers space for the utility companies and the control room of the power station.

01 View from east | 02 View from south | 03 Exterior at night | 04 Site plan | 05 View from southeast | 06 Interior view | 07 Interior from walkway



05



06



07