



10000 X

EUROPEAN
ARCHITECTURE

BRAUN



01

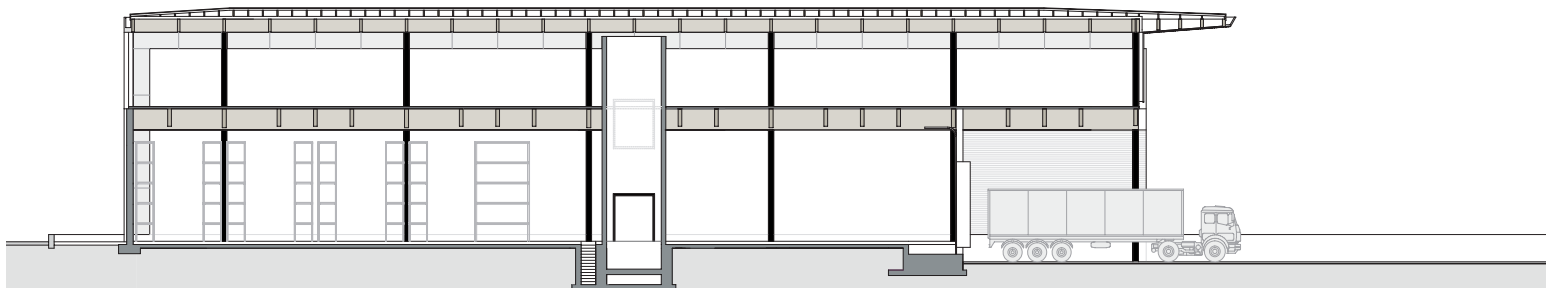
ROTHOBLAAS

The „rothoblaas“ office is a large-scale commercial operation specializing in assembling systems and tools for the wood-working industry. Warehouse and commissioning are situated on the ground floor whereas administration, meeting room and showroom can be found on the upper floor. The aim of the project was to create a compact building with a high level of recognition and a corporate identity of the enterprise. This has led to a functional, structural shell, provided with a glass envelope. The main building material is wood to show the own products by means of a modern and innovative construction.

01 XXXXXXXXXXXXXXXXXXXX 02 XXXXXXXXXXXXXXXXXXXX
 03 XXXXXXXXXXXXXXXXXXXX 04 XXXXXXXXXXXXXXXXXXXX
 05 XXXXXXXXXXXXXXXXXXXX



02



03

CITY
Bozen

COUNTRY
Italy

REGION
South Europe

TYPOLGY
office

COMPLETION
2004

CLIENT
rothoblaas

ARCHITECTS
monovolume