

Architects index (A-Z)

ACK1 - IDOM

AIR

AllesWirdGut

arch15

Architects Collective

Arquitectos Anónimos

ARTEC Architekten

ARX Portugal Arquitectos

b720 Arquitectos - Fermín Vázquez

Barko & Leibinger Architects

Bevk Perović Arhitekti

Arch-Manual

Boltshauser Architekten

Caramel Architekten

CC Architects

Correia & Regazzi Arquitectos

David Tajchman

Davide Macullo Architects

DCPP Arquitectos

Evota

Francisco Izquierdo + María José Vares

German del Sol

Gnädinger Architekten

Loor Frank

J. MAYER H. Architects

José María Sánchez García

Kjellgren Kaminsky Architecture

Lin Finn Geipel + Giulia Andi

Luis Machuca & Associates

Magén Arquitectos

Manuelle Gautrand Architecture

Martínez Lapeña & Torres Arquitectos

MGP Arquitectura & Urbanismo

MA2

Multiforma

modostudio

monovoluma

noda17 Architects

Ricardo Carvalho + Joana Vilhena Architects

realU

Sebastián Irarrázaval Architects

SOMOS Arquitectos

Studio mk27 (Marcio Kogan Architects)

Studio MAS

Tham & Videgård Arkitekter

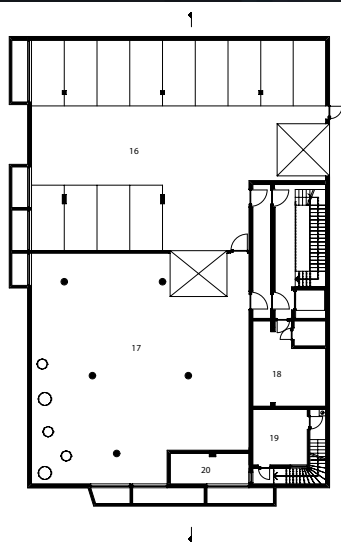
Verónica Arcoe

Zerodegrees Architecture

Curated and Edited by Bruce Q. Lan AADCU Program

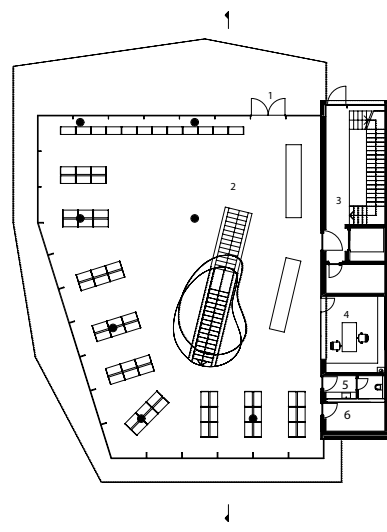
MONOVOLUME ¶ BLAAS BUILDING

Architects: Monovolume Architecture + Design (Arch. Pedó Patrik / Arch. Pobitzer Jury) ¶ Location: Bozen, Italy ¶ Architectural staff: Arch. Christian Gold / Arch. Barbara Waldböth / Arch. Thomas Garasi ¶ Structural engineers: Baucon Bozen (Ing. Neulichedl Simon) ¶ Volume: 11,000 m³; Building area: 1,250 m² ¶ Realisation: 2007; Building costs: 2.5 million euro



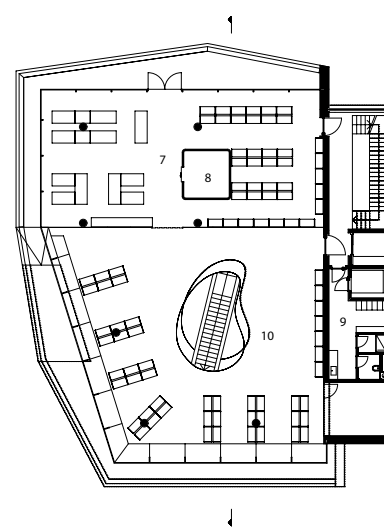
- 16 Garage
- 17 Storage room
- 18 Technical installations room
- 19 Central heating room
- 20 Pellets room

scale 1 : 200



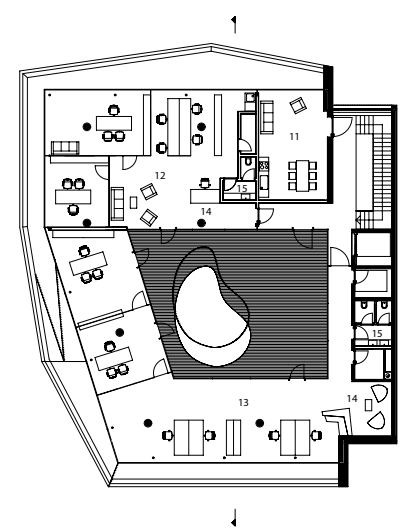
- 1 Entrance
- 2 Sales / Shop
- 3 Staircase
- 4 Office
- 5 Bath/WC
- 6 Store room

scale 1 : 200



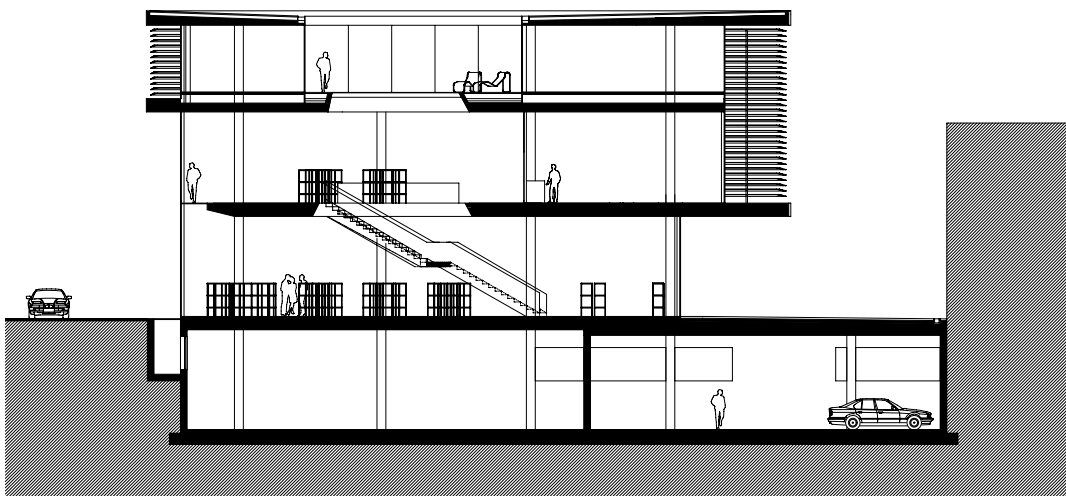
- 7 Repair shop
- 8 Spray booth
- 9 Changing room
- 10 Sales / Shop

scale 1 : 200

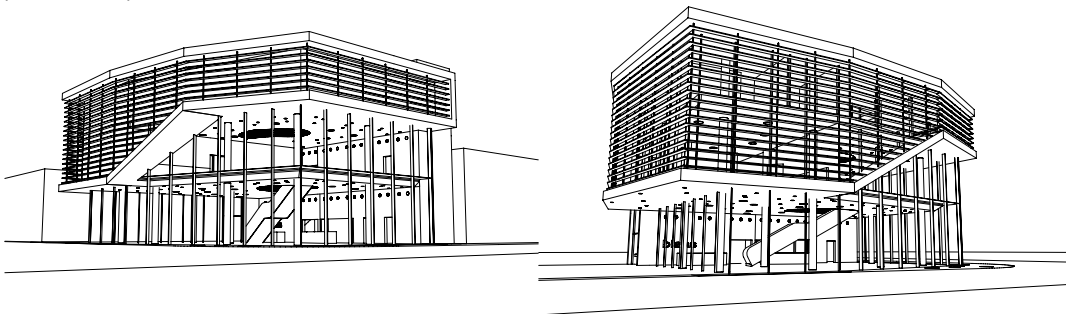


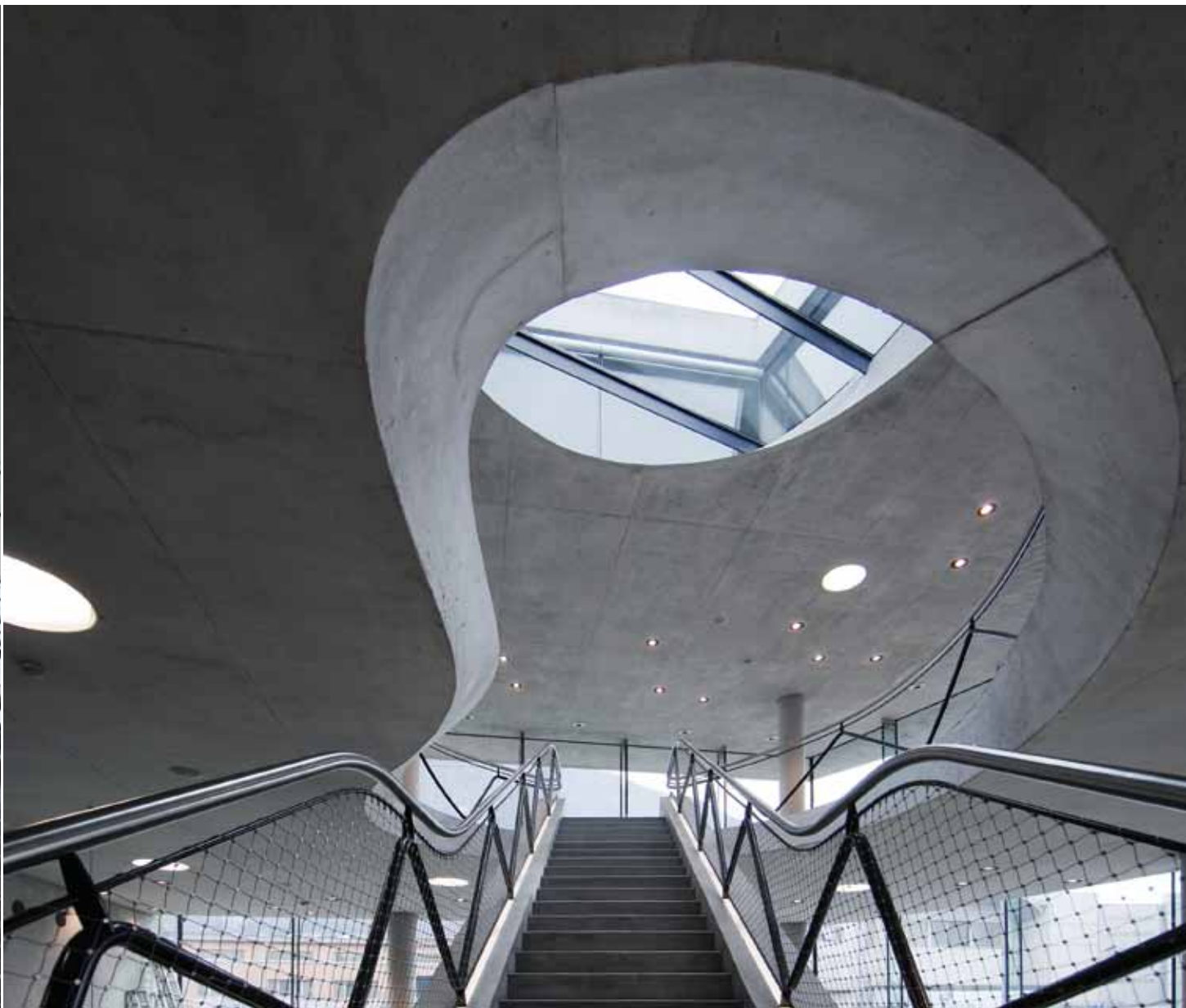
- 11 Recreation room
- 12 Office 01
- 13 Office 02
- 14 Reception
- 15 Bath/WC

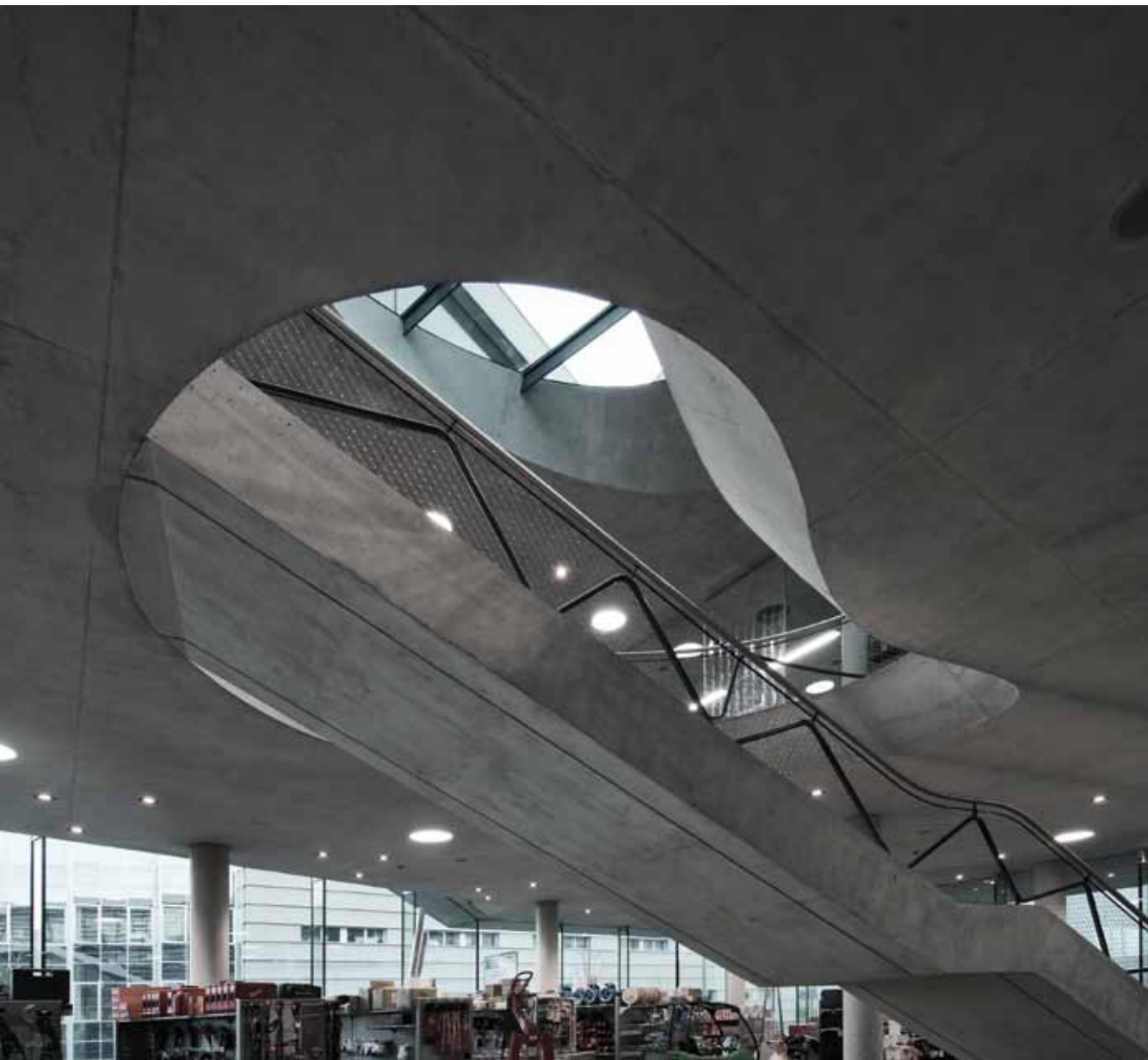
scale 1 : 200



The company Blaas in Bolzano is specialized in electro-mechanics. In the new head office, the company presents its new product range and offers repair service. ¶ On the ground floor of the building, there is the sales division, on the first floor the exposition area and the repair shop. All administration offices are located on the second floor. The overall impression of the structure is a homogenous and closed building. Nevertheless, there exists a separation between the public and the private sector. The client can perceive this clear and formal internal division already from the outside. ¶ The glass façade on the northern side provides a maximum of visibility and transparency to the exhibition and sales area. The private spaces, such as repair offices, stockrooms and offices have their façades exposed to the south, east and west which are protected with a sun screening system. ¶ In order to establish an optimal relation between natural light, development and planning of spaces, there has been created a luminous entrance hall in the centre of the building with an inner courtyard. This green open spot permits the administrative sector of the second floor to receive ample natural light and at the same time, it generates a protected, quiet recreation area for the staff.





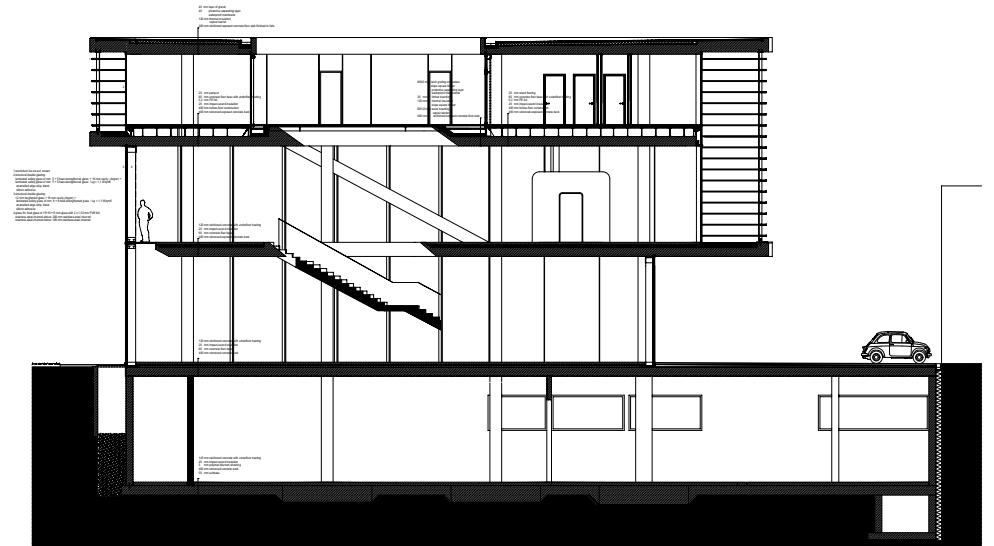
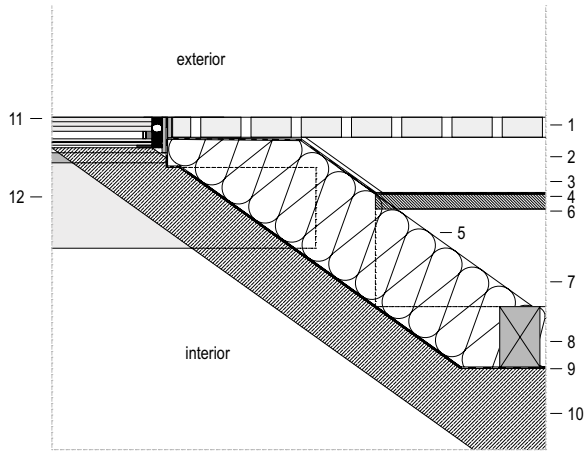




Skylight with horizontal glazing

Detail section

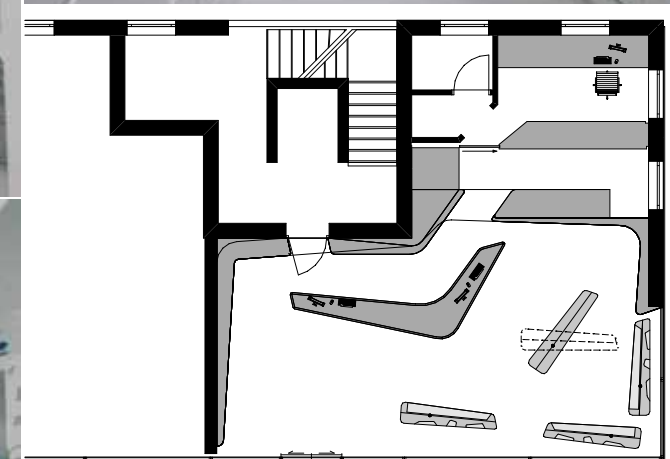
- 1 80/40 mm larch grating on bearers
- 2 slope square timber
- 3 protective separating layer
- 4 waterproof membrane Sarnafil G410 - 18
- 5 30 mm timber boarding
- 6 120 mm thermal insulation
- 7 slope square timber
- 8 80/120 mm wood boarding
- 9 vapour barrier
- 10 400 mm reinforced exposed concrete floor slab
- 11 structural glazing: laminated safety glass of heat-strengthened glass 6 + 6 - 15 - 15 - 5 + 5 mm / ug = 1.1 W/mqK enamelled edge strip, black, jointed with black silicone
- 12 Steel beam T 60/160/10 mm





MONOVOLUME ¶ PARAPHARMACY APPIANO

Architects: Monovolume Architecture + Design (Arch. Daniela Patrik / Arch. Pobitzer Jury) ¶ Location: Appiano, Italy ¶ Architectural studio: Simon Constantini / Rita Rabensteiner / Christiane Dobler ¶ Structural engineers: Baucon Bozen (Ing. Neulicher / Simon) ¶ Building area: 83 m² ¶ Realisation: 2008

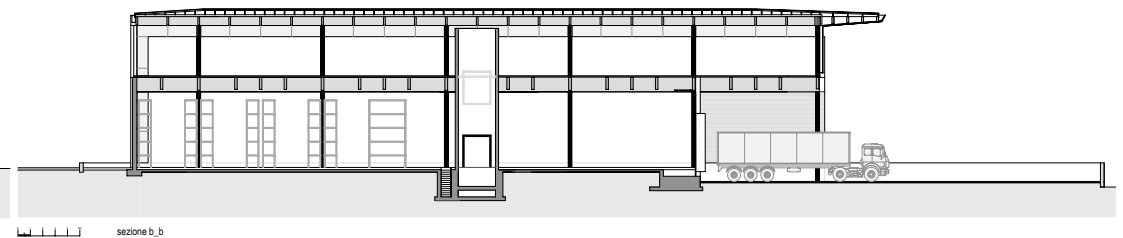
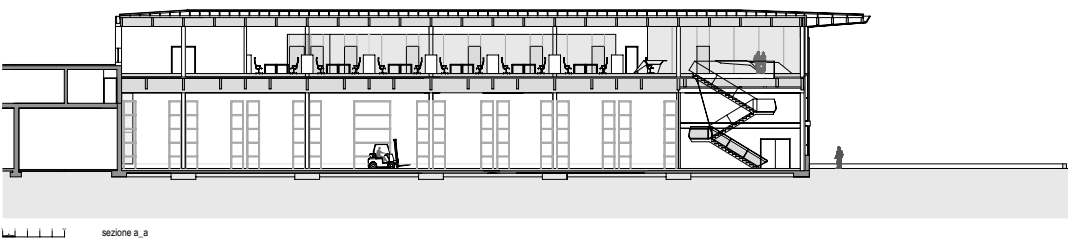


Satisfying functional as well as aesthetic demands is not exactly easy for the pharmacy business, at least not in architectural terms. Things are apparently different in South Tyrol. Here, in a new building in the centre of Eppan, pharmacy has been built that actually meets the highest design standards. ¶ Due to the limited floor area, a thrifty, well considered use of space was essential for the executing architects from Monovolume. The concept therefore has its origins in every pharmacy's holy of holies, the pharmacist's cabinet, whose lines penetrate all the furnishings. Shelves around the edge of the interior were used to create copious presentation areas, whose horizontal lines embrace and visually enlarge the space and provide a setting for a tailor-made Corian counter, which seems to float as a dynamic focal point on a band of light above the white marble terrazzo floor. Due to its unusual size for a village pharmacy, this simultaneously enables appropriate consulting activity and maximum discretion, while the unusual, highly curved shape prevents it from having too powerful an effect. Pivoting shelves were tensioned between floor and ceiling and present niches for displaying selected products on the side facing the window. Their height was determined such that they restrict the view from outside without lessening the generous feeling of space or amount of light entering the building. In order to direct the attention of customers to the mostly colourful products, the entirely white furnishings made from painted MDF retreat into the background. Balanced lighting throughout allows the pharmacy seemingly to disappear entirely behind its products.



MONOVOLUME ¶ ROTHO BLAAS BUILDING

Architects: Monovolume Architecture + Design (Arch. Pedó Patrik / Arch. Pobitzer Jury) ¶ Location: Cortaccia, Italy ¶ Architectural staff: Arch. Christian Gold / Arch. Barbara Waldboth / Arch. Angelika Mair ¶ Structural engineers: Baucon Bozen (Ing. Neulichedl Simon) ¶ Volume: 24,000 m³; Building area: 85 m² ¶ Realisation: 2004; Building costs: 3.5 million euro





The "rothoblaas" office is a large-scale commercial operation specializing in assembling systems and power tools for the woodworking industry. Warehouse and commissioning are situated on the ground floor whereas administration, a meeting room and a showroom can be found on the upper floor. The aim of the project was to create a compact building with a high level of recognition. The building serves as corporate identity of the enterprise; contemporary and representative of the company. This has led to a functional, compact structural shell, provided with a glass envelope. The main building material employed is wood, in order to show the own products.

