

策划编辑：林 俐

书籍装帧：雕刻时光工作室



凭密码辨真伪，送完整电子版

Distinguish genuine book from fake depending  
on password, send a complete e-book

# COMMERCIAL THE SELECTED OF INTERNATIONAL LATEST SPACE RESTAUNT THE SELECTED OF INTERNATIONAL LATEST SHOP BAR&CAFE RECREATON

THE SELECTED OF  
INTERNATIONAL LATEST  
COMMERCIAL SPACE  
林东 主编

国际最新商业空间精选

华中科技大学出版社

上架指导：建筑/室内设计

ISBN 978-7-5609-6659-5



9 787560 966595

定价：328.00元 (USD80.00)

# COMMERCIAL THE SELECTED OF INTERNATIONAL LATEST SPACE 国际最新商业空间精选

林东 主编  
张洁 张琦 杨鑫 翻译



华中科技大学出版社  
<http://www.hustpss.com>



## 阿皮亚诺超级药房（商厦） Parapharmacy Appiano

### ■ 项目介绍 Project Details

Project Name/项目名称: Parapharmacy Appiano

Location /地点: Appiano (BZ), Italy

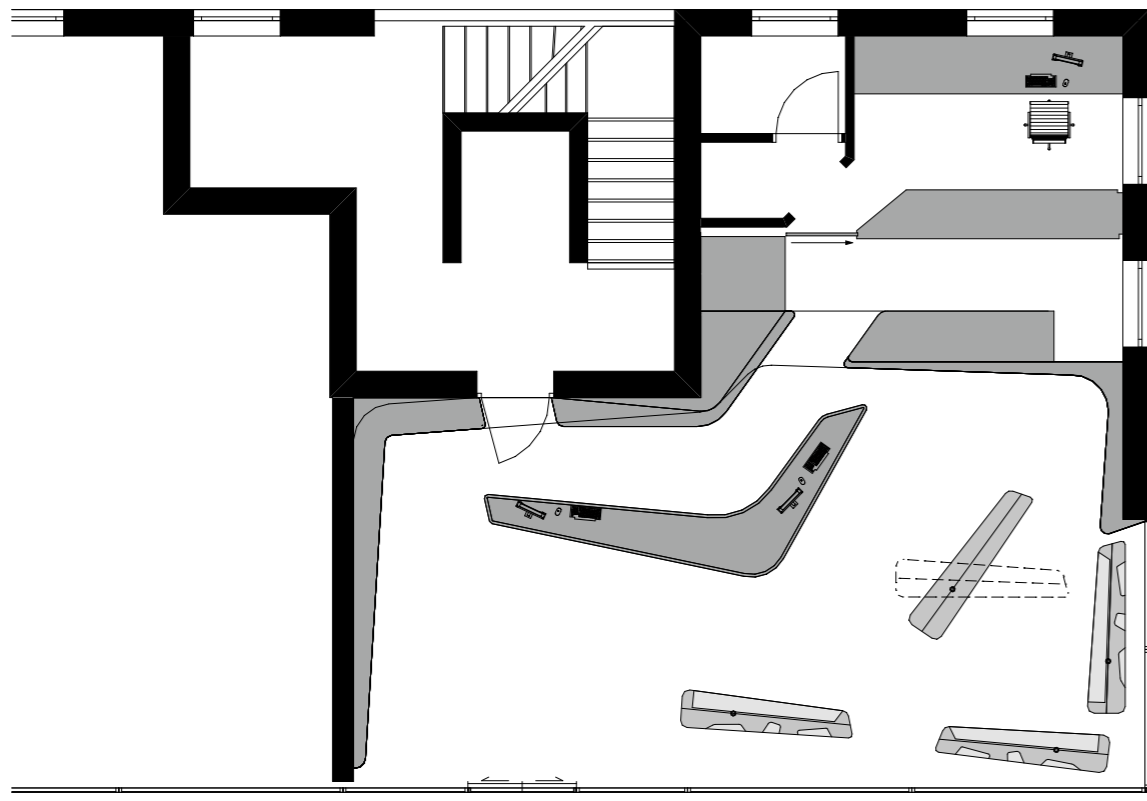
Area /面积: 85 m<sup>2</sup>

Completion Date / 竣工时间: 2008

Design Company / 设计公司: Monovolume Architecture + Design (Patrik Pedó\_Juri Pobitzer) [www.monovolume.cc](http://www.monovolume.cc)

Designer / 设计师: Simon Constantini / Rita Rabensteiner / Cécile Dobler

Photographer / 摄影师: Piero Perra





对于药店来说，同时满足功能以及审美的需求很不容易，特别是在建筑设计方面。在南蒂罗尔事情似乎不同。在这里，建造在Eppan中心的一幢新建筑内的药店，就符合最高的设计标准。

由于地面面积有限，要想建造一个单一的容积，建筑师需要很好地考虑如何对空间进行最节省的利用。因此，这个概念在每一个药店的神圣的地方都有其起源，药剂师陈列柜形成的线条贯穿了所有的家具。围绕内部边缘的隔板创建出丰富的演示区，其水平线包围了并在视觉上放大了空间，同时提供一个度身订造耐柜台设置，这似乎是白色大理石水磨石地板之上的一个动态的浮动的光带焦点。由于一村药店其不同寻常的大小，它同时允许适当的咨询活动并具有最大的随意性，而不同寻常的，高度弯曲的形状可防止它具有过于强大的效果。旋转货架在地板和顶棚之间拉伸，壁龛上显示当前面临窗边选择的产品。它们的高度被确定，它们限制了从外部看进来

Satisfying functional as well as aesthetic demands is not exactly easy for the pharmacy business, at least not in architectural terms. Things are apparently different in South Tyrol. Here, in a new building in the centre of Eppan, pharmacy has been built that actually meets the highest design standards.

Due to the limited floor area, a thrifty, well considered use of space was essential for the executing architects from Monovolume. The concept therefore has its origins in every pharmacy's holy of holies, the pharmacist's cabinet, whose lines penetrate all the furnishings. Shelves around the edge of the interior were used to create copious presentation areas, whose horizontal lines embrace and visually enlarge the space and provide a setting for a tailor-made Corian counter, which seems to float as a dynamic focal point on a band of light above the white marble terrazzo floor. Due to its unusual size for a village pharmacy, this simultaneously enables appropriate consulting activity and maximum discretion, while the unusual, highly curved shape prevents it from having too powerful an effect. Pivoting shelves were tensioned between floor and ceiling and present niches for displaying selected products on the side facing the window. Their height was determined such that they restrict the view from outside without lessening the generous feeling of space or amount of light entering the building. In order to

的视角，但是并没有减少空间宏大的感觉，或者进入到建筑物中的光线数量。为了把顾客的注意力直接吸引到丰富多彩的产品上，用油漆过的MDF制成的白色家具完全的隐退到背景中。整体平衡的照明，显然是为了使配药室完全消失在产品的背后。

direct the attention of customers to the mostly colourful products, the entirely white furnishings made from painted MDF retreat into the background. Balanced lighting throughout allows the pharmacy seemingly to disappear entirely behind its products.

