



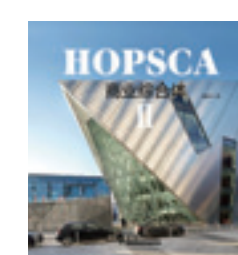
100 top houses & landscapes II
 Price: RMB798
 Pages: 600
 Super 8vo (260mm×368mm)
 Binding: Hardcover
 Publication Date: 2011.7
 Publisher: China Forestry Publishing House
 ISBN 978-7-5038-6207-6



100 top houses & landscapes III
 Price: RMB798
 Pages: 592
 Size: 260mm×368mm
 Binding: Hardcover
 Publication Date: 2012.3
 Publisher: China Forestry Publishing House
 ISBN 978-7-5038-6479-7



Top 101 World's New Buildings
 Price: RMB798
 Pages: 592
 Size: 260mm×368mm
 Binding: Hardcover
 Publication Date: 2011.9
 Publisher: Jiangsu People's Publishing, Ltd.
 ISBN 978-7-214-07391-4



HOPSCA II
 Price: RMB298
 Pages: 312
 Size: 280mm×280mm
 Binding: Hardcover
 Publication Date: 2012.3
 Publisher: Tianjin University Press
 ISBN 978-7-5618-4287-4



New Buildings of the Masters I
 Price: RMB278
 Pages: 296
 Size: 240mm×320mm
 Binding: Hardcover
 Publication Date: 2012.2
 Publisher: Jiangsu People's Publishing, Ltd.
 ISBN 978-7-214-07680-9



New Buildings of the Masters II
 Price: RMB288
 Pages: 304
 Size: 240mm×320mm
 Binding: Hardcover
 Publication Date: 2012.2
 Publisher: Jiangsu People's Publishing, Ltd.
 ISBN 978-7-214-07675-5

Master's New Works – It has collected the new works of the famous architects in the world.

Rich Content – It almost covers all types of public buildings.

Wide Scope – The projects come from 70 world-class cities on five continents.

Full and Professional Materials – There are rich technical drawings and professional photos.

The book has showcased the new works of many outstanding architects and design companies, such as Atelier Jean Nouvel, Arquitectonica, Perkins Eastman, UNStudio, SAKO Architects, BDP(Building Design Partnership), BCHO Architects, Dietmar Feichtinger Architects, Jakob + Macfarlane Architects, Cino Zucchi Architetti, Steven Holl Architects, Studio Daniel Libeskind, Woods Bagot, P&T Architects and Engineers Ltd., etc.



Jiayu Publishing & Media
 Http: www.jiayup.com
 Contributing Hotline : 8620-89090386/42
 Sales Hotline : 8620-28905912
 Professional Photography : 8620-89090349



World's New Buildings II

JTart Publishing

TOP 101

World's New Buildings II

By JTart



JTart Publishing



Blass General Partnership, Bolzano

Location: Bolzano, Italy
 Architectural Design: monovolume architecture+design
 Architects: Christian Gold, Barbara Waldbboth, Thomas Garasi
 Photography: Oskar Da Riz

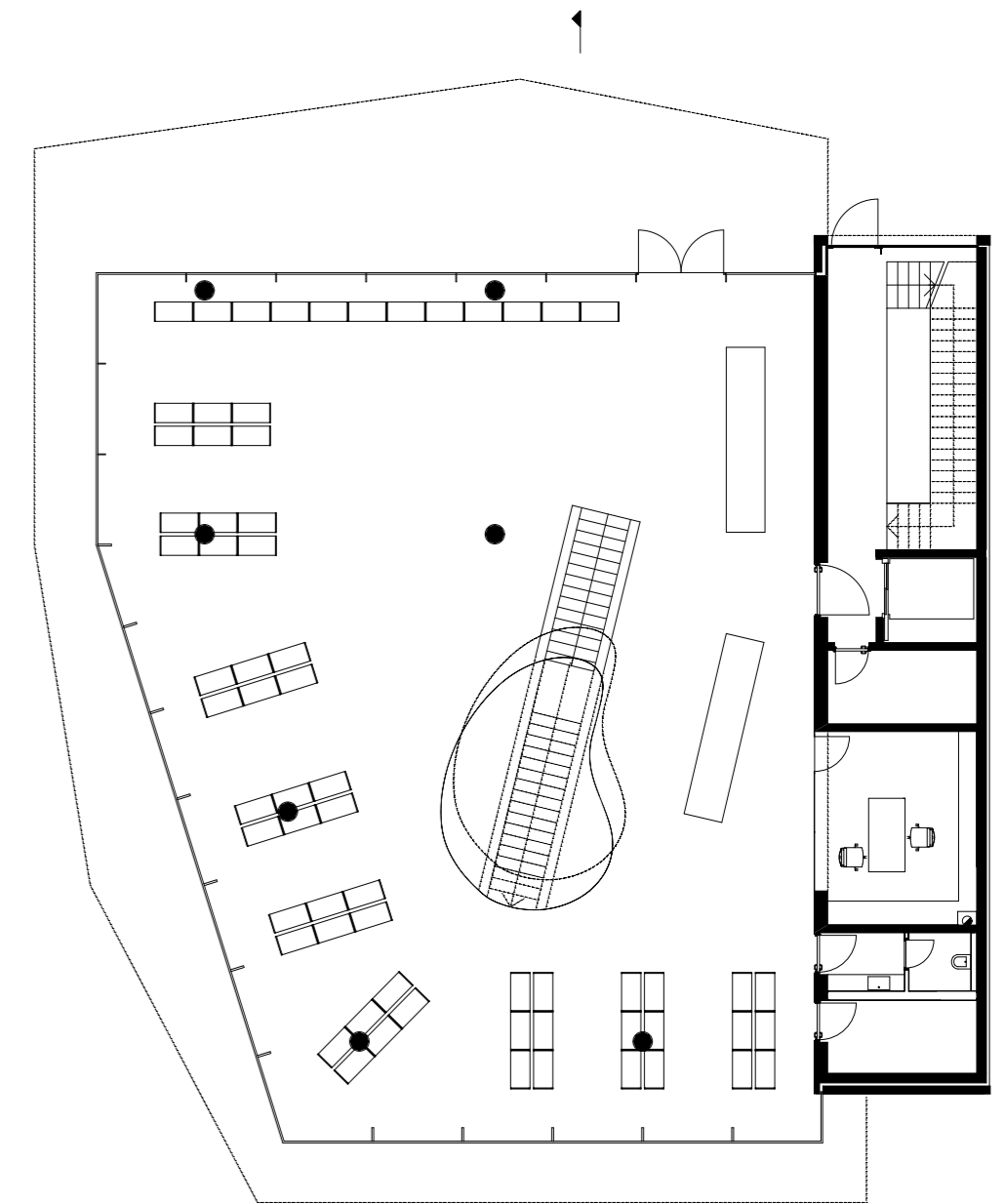
Profile

The company Blass in Bolzano is specialized in electro-mechanics. In the new head office the company presents its new product range and offers repair service.

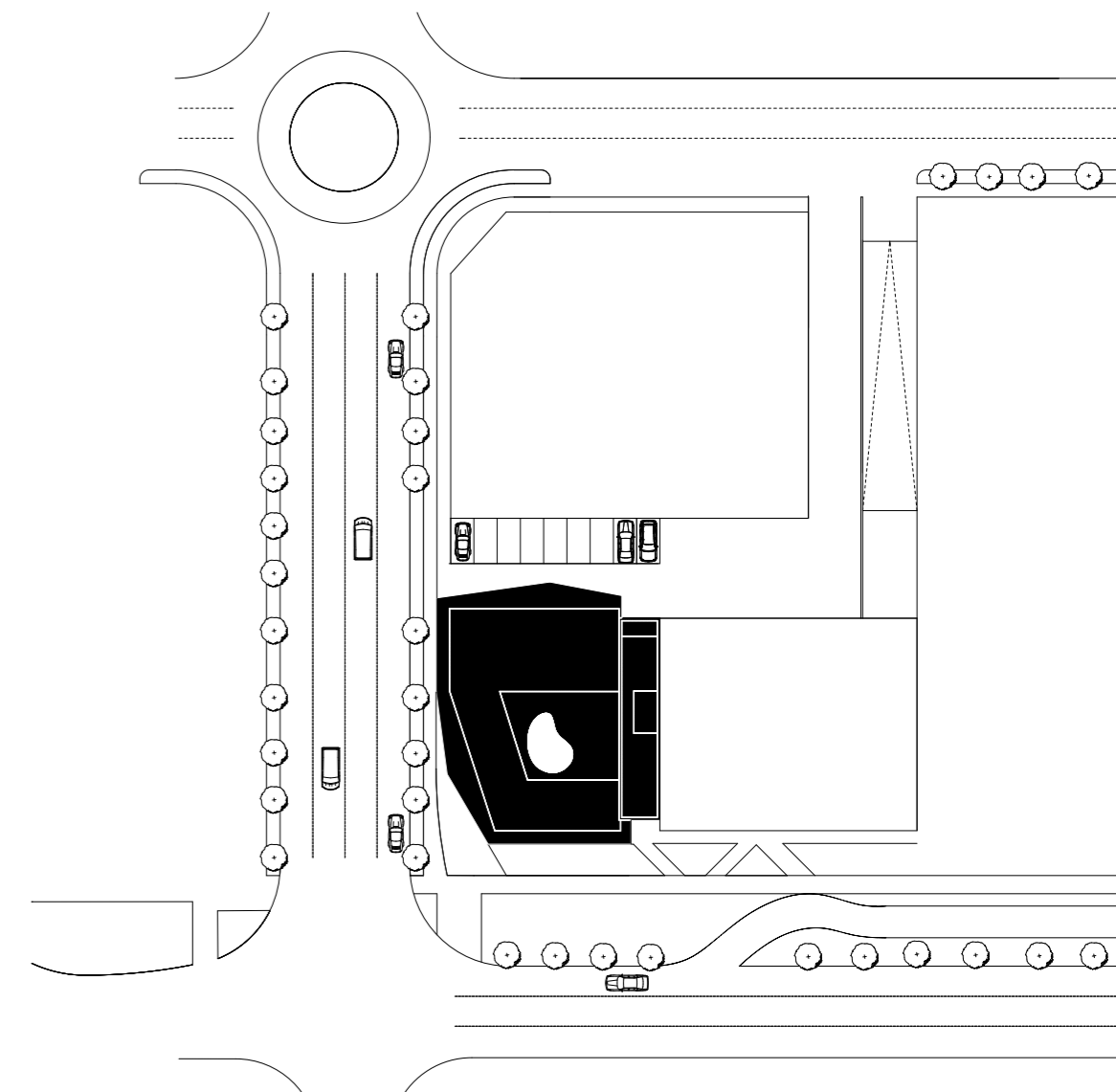
Innovative Theme—Distinct Separation

On the ground floor of the building there is the sales division, on the first floor the exposition area and the repair shop. All administration offices are located on the second floor. The overall impression of the structure is a homogenous and closed building. Nevertheless, there exists a separation between the public and the private sector. The client can perceive this clear and formal internal division already from the outside. The glass facade on the Northern side provides a maximum of visibility and transparency to the exhibition and sales area. The private spaces such as repair offices, stockrooms and offices have their facades exposed to the South, East and West which are protected with a sun screening system.

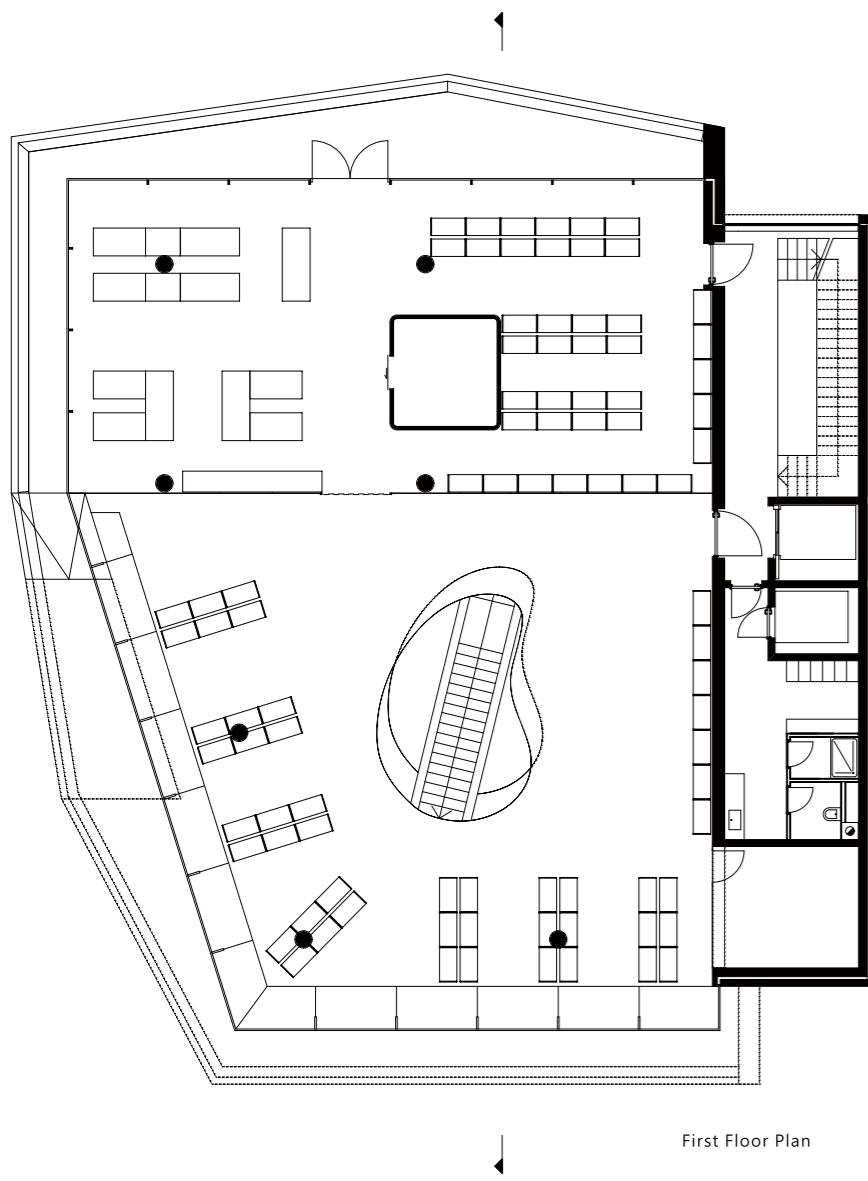
In order to establish an optimal relation between natural light, development and planning of spaces there has been created a luminous entrance hall in the centre of the building with an inner courtyard. This green open spot permits the administrative sector of the second floor to receive ample natural light and at the same time it generates a protected, quiet recreation area for the staff.



Ground Floor Plan



Site Plan



First Floor Plan



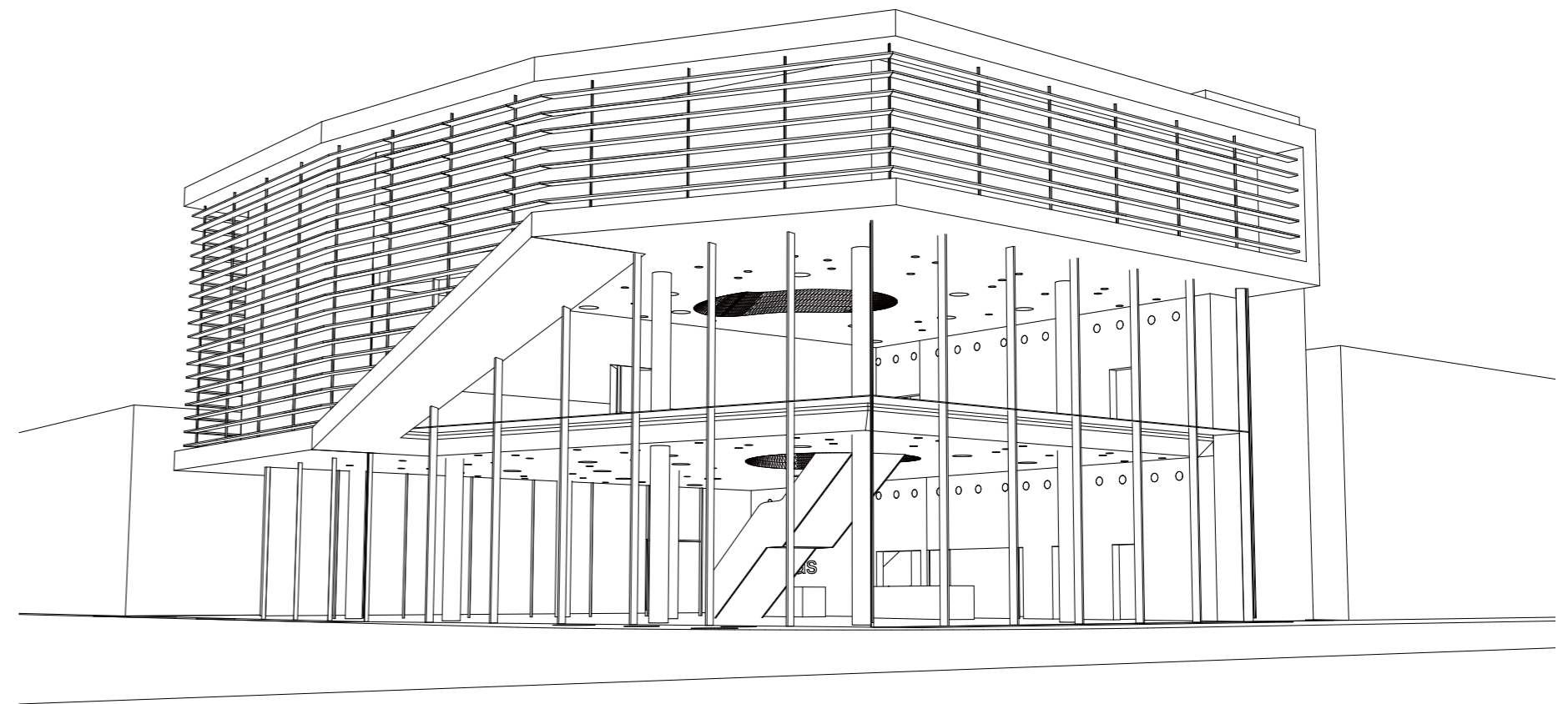
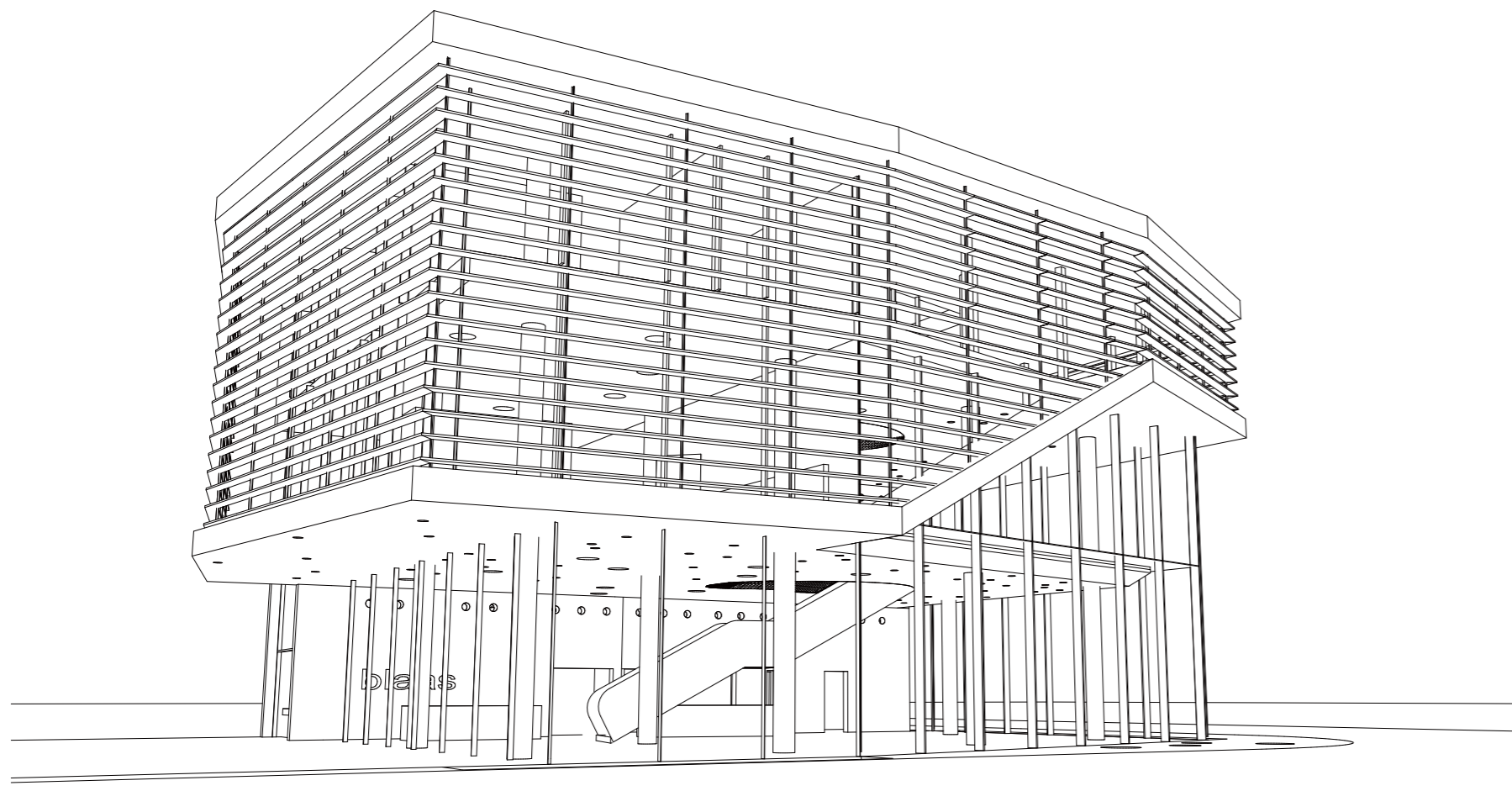
Second Floor Plan

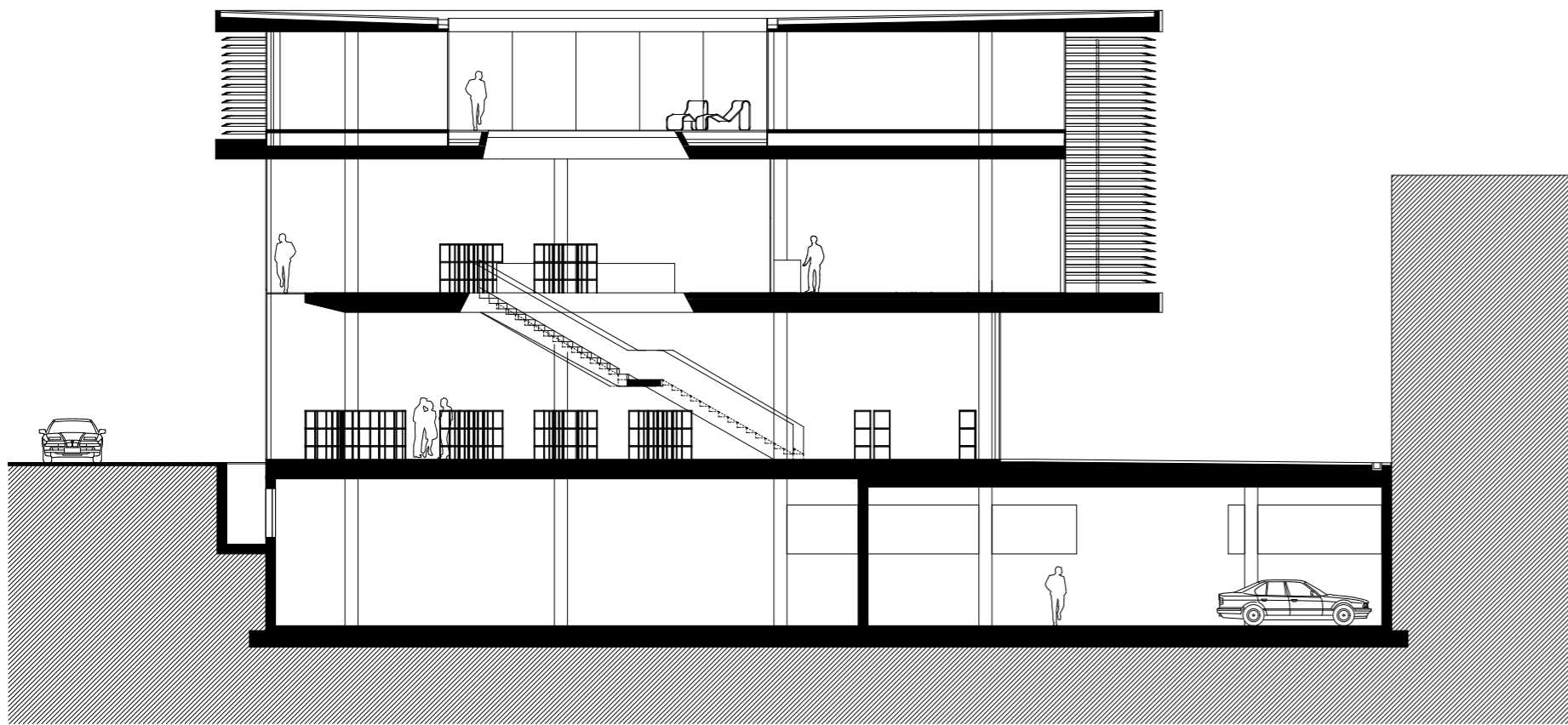
Shape and Coat

The overall impression of the structure is a homogenous and closed building. The glass facade on the Northern side provides a maximum of visibility and transparency to the exhibition and sales area, which makes the buildings rigorous and generous.

Structure and Material

Glass materials are largely used on the curtain wall, roof and column.





Sectional Drawing

