

# Massive

Chris van Uffelen

# Brutalism Now and Then



# Expressive

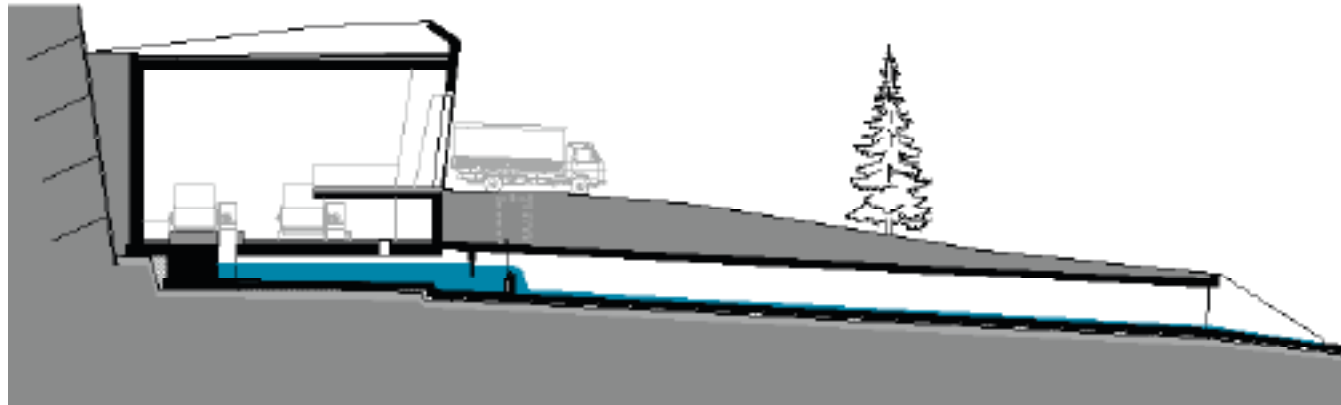


# Sculptural

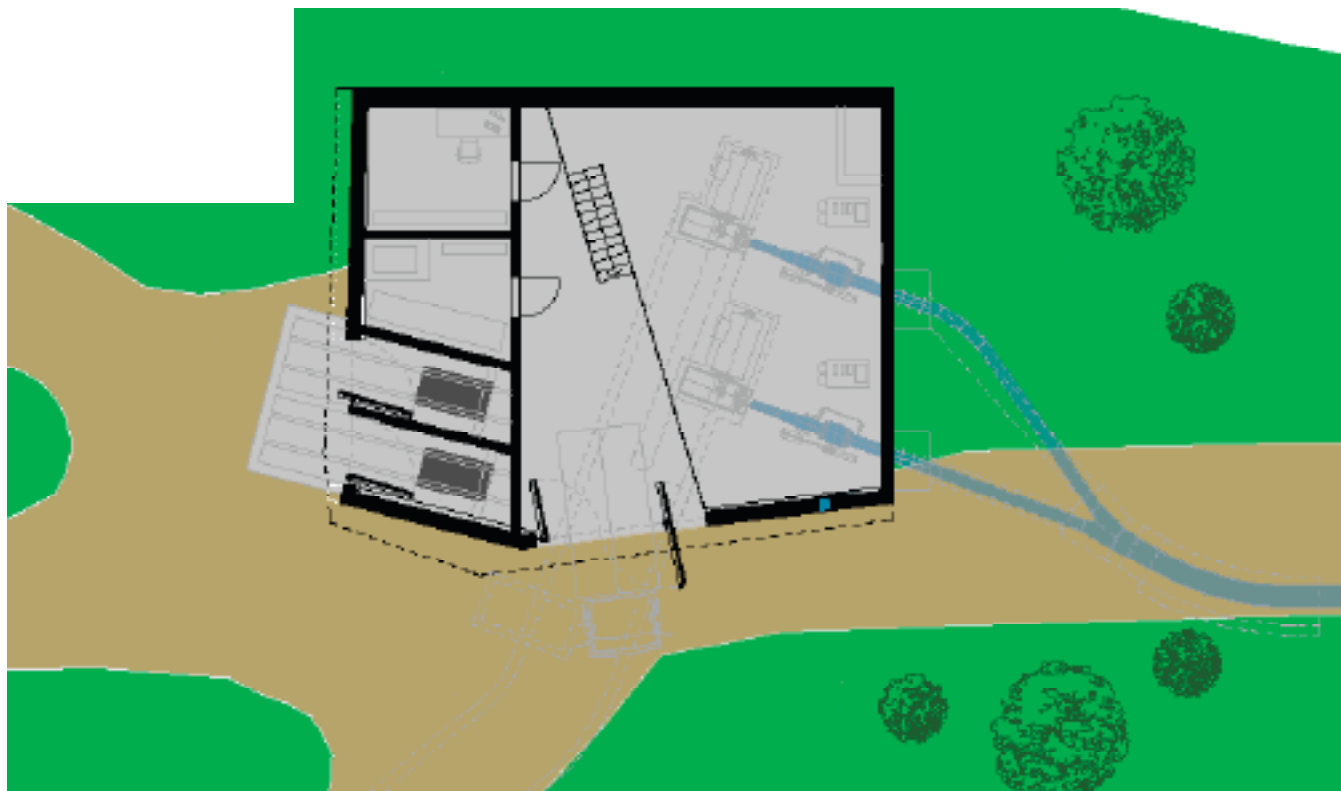


by monovolume architecture+design

# Hydroelectric Power Station Winnebach



Section



Ground floor plan



This hydraulic power station is located in Vintl in the village of Dörfl. Due to the limited amount of space available, the powerhouse has been built partially into the slope. The design comprises a simple building that has been carefully adapted to suit the landscape and local characteristics.

Location: Vintl, Dörfl, Italy  
Architect: monovolume  
architecture+design  
Year of Completion: 2009

The new powerhouse is intended to look like a large rock, jutting out of the sloping site. As well as incorporating various angles, edges and sloping faces, the powerhouse concept is reinforced by the use of just a few main materials, including concrete, steel and glass. This similarity reinforces the "natural" appearance and helps the building blend into its surroundings. The similarity to a rock is emphasized by the "veins" that cut through it. These veins are formed of glass bands and run across the building allowing views into the machine hall in some areas.





Building looks like a rock jutting from the hillside



Light shining through glass bands at night



Glass bands embedded in wall



Corner detail



Interior and machinery