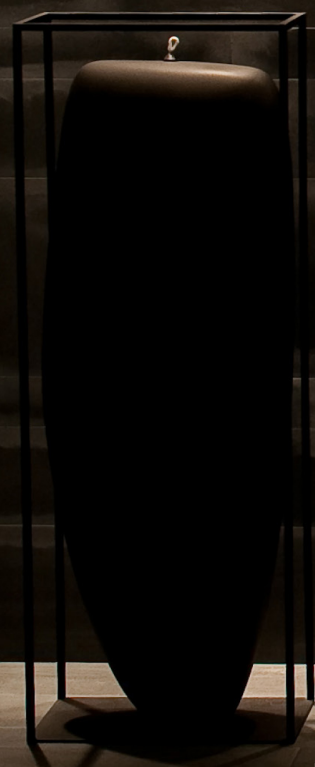


DESIGN ART OF
VILLA

III



ARTPOWER

DESIGN ART OF
VILLA III

—

PREFACE/

Design Art of Villa III

Copyright © Artpower International Publishing Co., Ltd.

ARTPOWER™

Designer: Chen Ting
Chief Editor: Li Aihong

Address: Room C, 9/F., Sun House, 181 Des Voeux Road Central, Hong Kong, China

Tel: 852-31840676

Fax: 852-25432396

Editorial Department

Address: G009, Floor 7th, Building 807-808, Yimao Centre, Meiyuan Road, Luohu District, Shenzhen, China

Tel: 86-755-82913355

Fax: 86-755-82020029

Web: www.artpower.com.cn

E-mail: artpower@artpower.com.cn

ISBN 978-988-12617-7-9

No part of this publication may be reproduced or utilised in any form by any means, electronic or mechanical, including photocopying, recording or by any information storage and retrieval system, without prior written permission of the publisher.

All images in this book have been reproduced with the knowledge and prior consent of the designers and the clients concerned, and every effort has been made to ensure that credits accurately comply with information applied. No responsibility is accepted by producer, publisher, or printer for any infringement of copyright or otherwise arising from the contents of this publication.

Printed in China

The idea of a villa is an ancient one. The Roman villa sat in the countryside, a luxurious and secure retreat from the city. Today's urban villas are a deeply personal expression of shelter. At their best, they give expression to their inhabitant's personalities whilst enabling and enlivening the lives of those who live in them.

They often borrow ideas developed in the world's best hotels and resorts that are creating ever more luxurious spaces, which are often supported by highly sophisticated systems providing climate control, creating lighting scenes and seamlessly giving access to music and media.

The villa is typically sited as a pavilion hovering in or over a landscape or garden, and most are concerned with blurring the division between inside and outside. Most extend internal spaces into larger external spaces to create layered and shared volumes, where distant views are not possible, smaller vistas are often cleverly created.

This idea of the sharing of space to create new and more meaningful spaces is a theme that continues inside the buildings and is one of the distinctive features of the contemporary villa. Cellular living spaces are done away with and dining, living, cooking and entertaining areas, internal and external, are combined into spaces often only defined by subtle level changes in floors and ceilings.

Water has always been a part of the villa and this tradition continues in many of the buildings that you will see in this book.

The materiality of many of the buildings is distinctive in the way that more traditional ideas about what makes a house homely are incorporated into villa design by the use of warm textured natural materials. These materials temper the often masculine geometry of the buildings and this trend is apparent in many of the villas being designed today.

In our busy, and sometimes chaotic cities, these homes are a place of retreat where people can raise their families, entertain their friends, work and play.

by Greg Truen

Partner SAOTA

House M



Design Agency
monovolume architecture + design

Client
Privat

Living space
360 m²

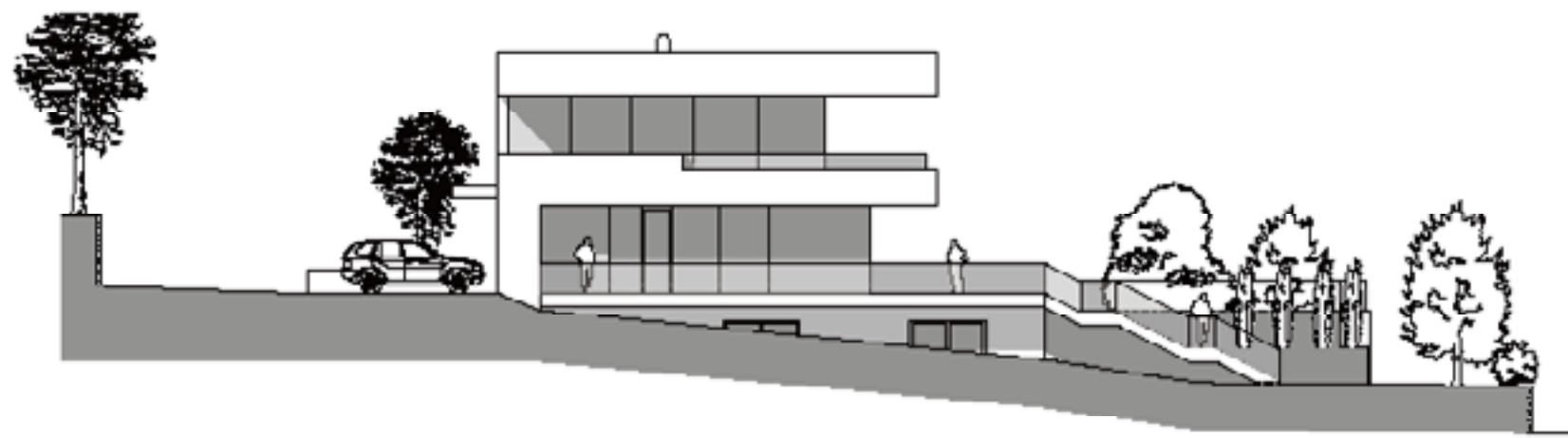
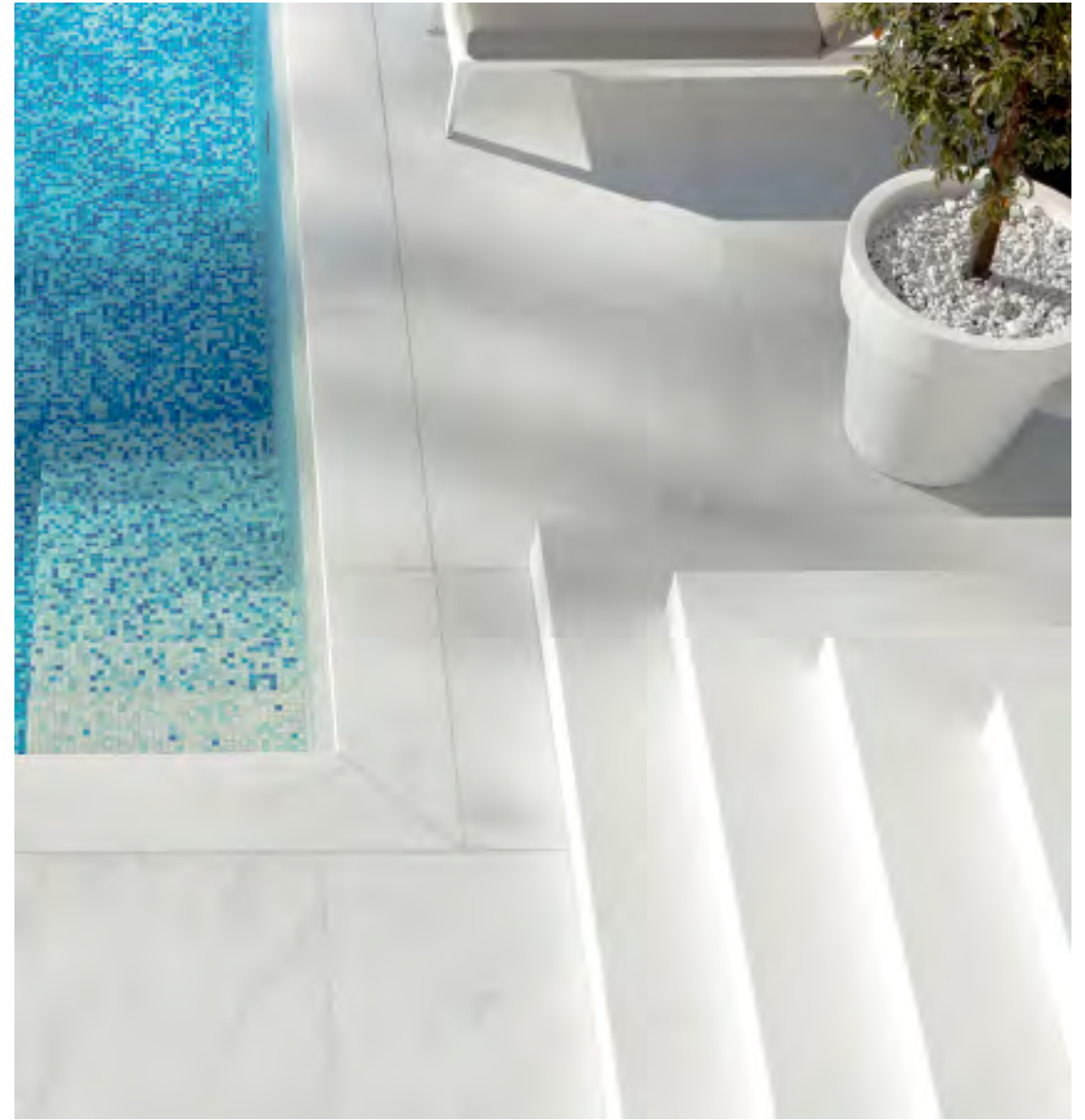
Coworkers
Luca di Censo, Sergio Aguado,
Benjamin Gänsbacher

Photography
M&H Photostudio

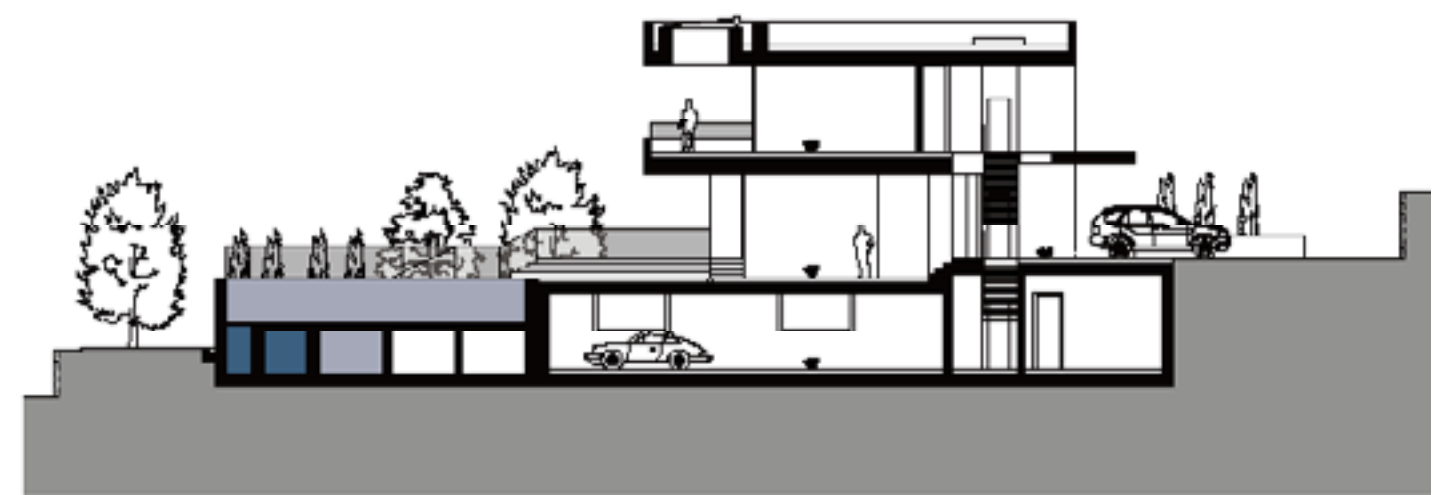
The project M, a residential building in the centre of Meran, is embedded in the quiet area of Obermais. The concept of the design was it to play with transparent and solid surfaces what follows fascinating insights and outlooks. The interior melts together with the outside space. The terrain flows through the building and finds his renewal in the pool- and meadow area. Because of a refined external design and the arrangement of the pool, lawn, garden and house the whole concept seems

like a unity with seamless transition. The ground floor follows the slightly sloping ground like a staircase to get a large garden area. Because of engineering technology considerations the building is conceived as a compact volume with one underground and two upper floors. From the construction point of view the house is built as a concrete construction, furnished with upgraded insulation. The glass-facade, door and window elements are executed as 3 layered glazier. 🔑



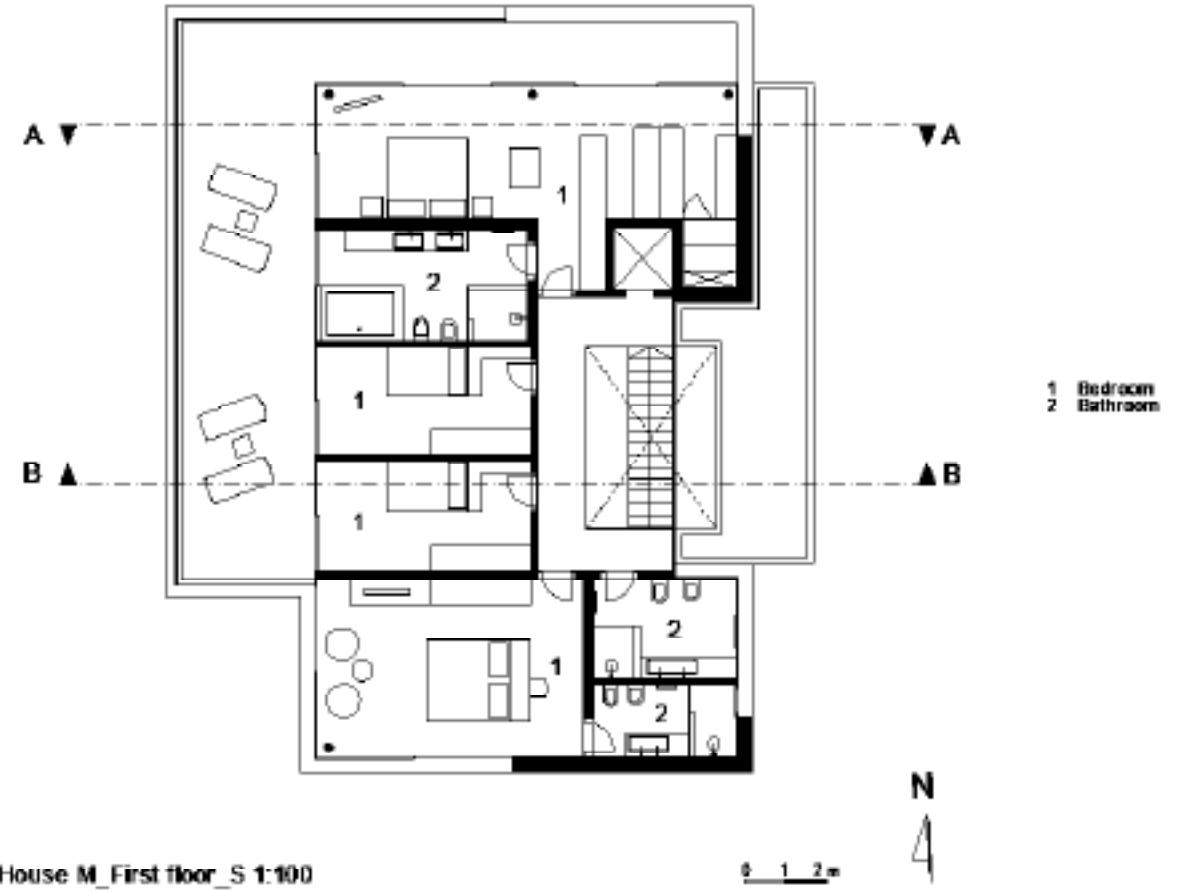
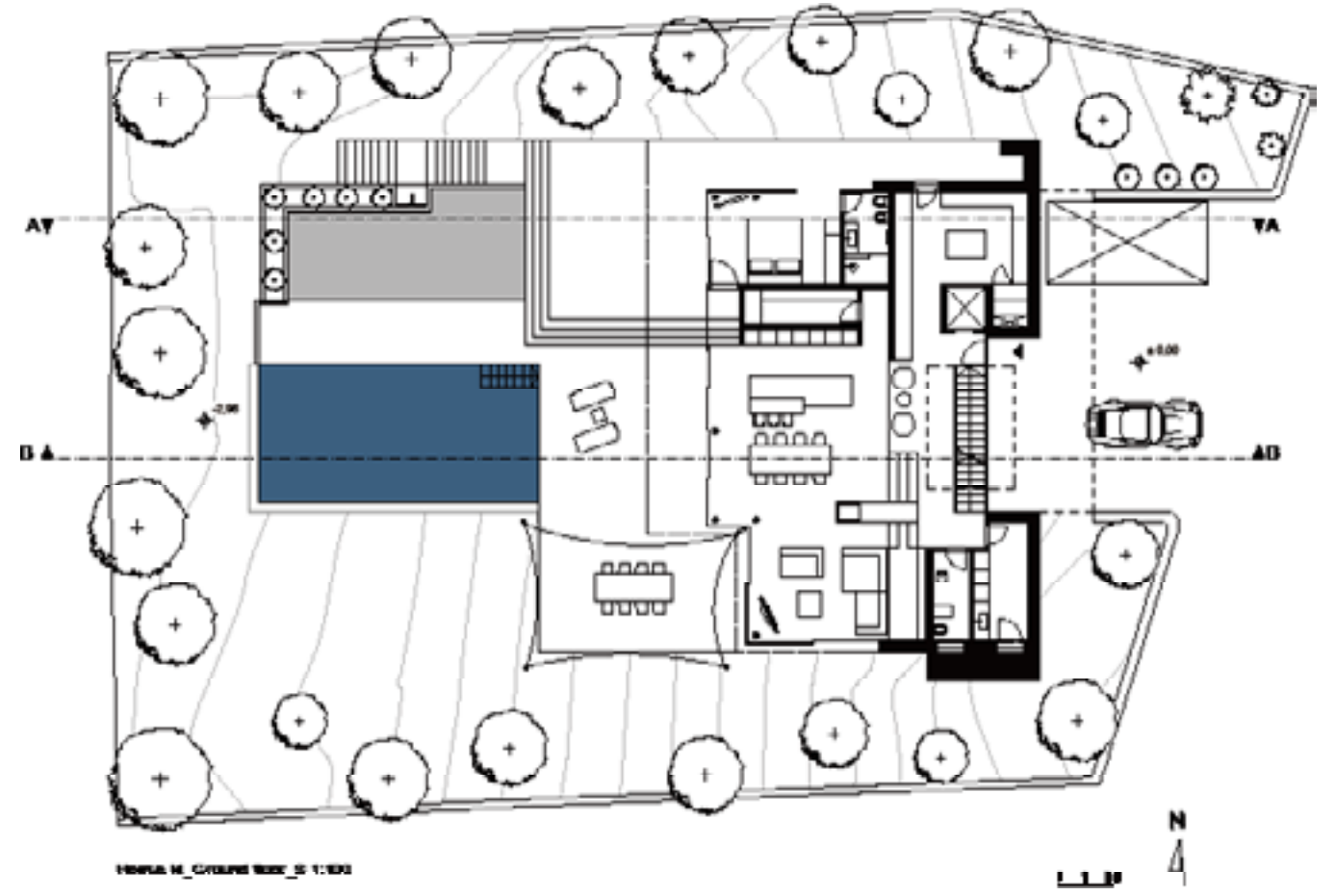


House H_North elevation_03 1:100

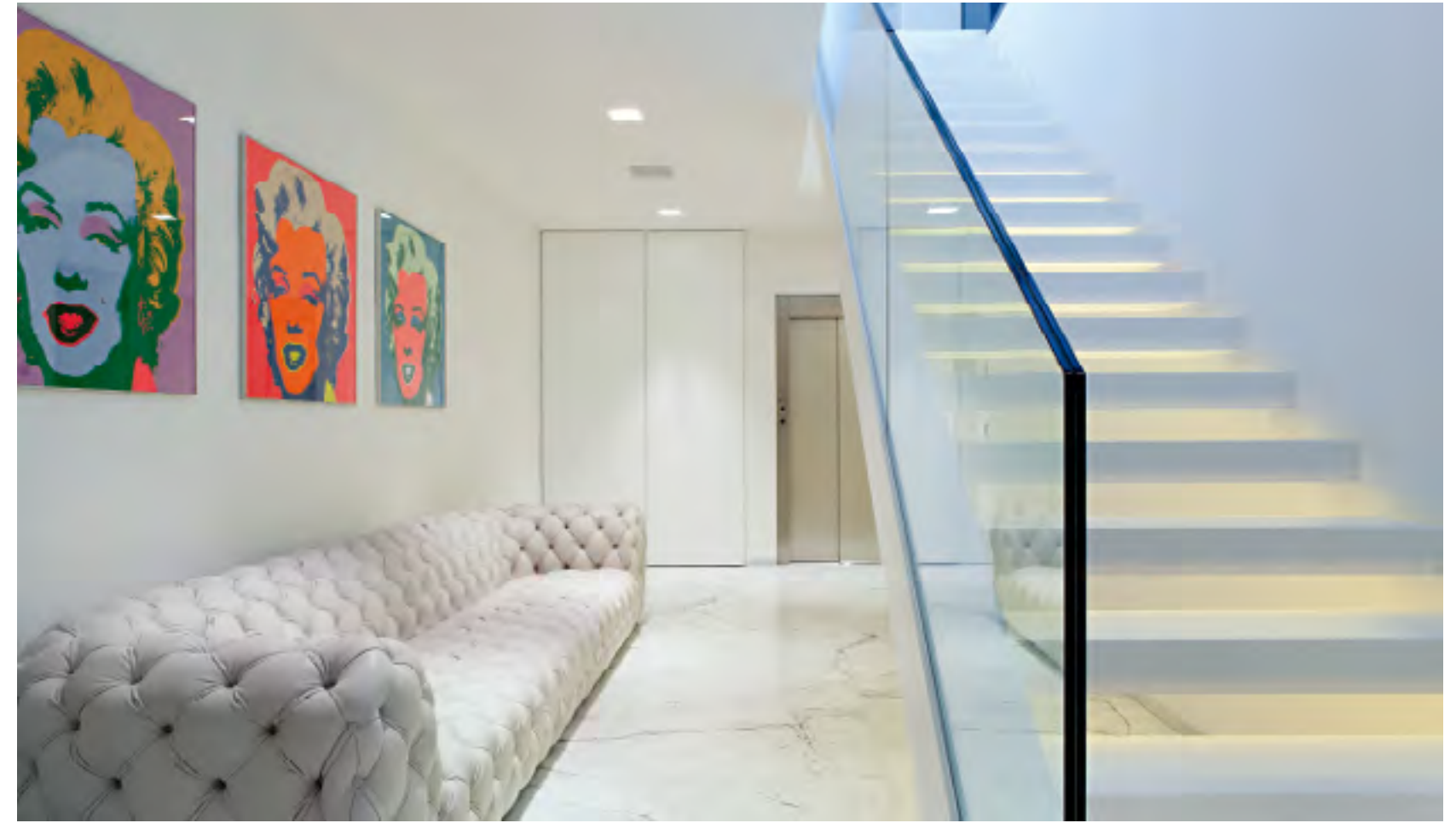


House H_Longitudinal section 03_3 1:100

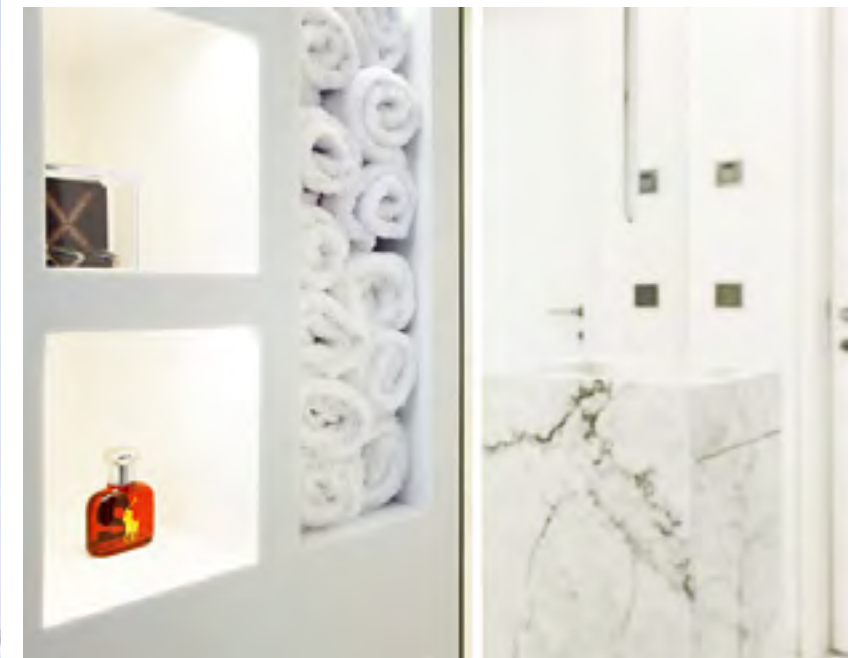














Jamie Bush & Co.

Widely admired for his relevant and keen understanding of architecture and design, Jamie approaches each new commission with a discerning and insightful point of view. Growing up in a family of renowned designers, photographers and artists in New York propelled him to study architecture and design in New Orleans and in Italy. After receiving his Masters in Architecture from Tulane University, Jamie headed west to practice architecture in Los Angeles and founded his own interior design firm in 2002.

He is recognized for his ability to mix period and contemporary furnishings with a fresh and discriminating eye. Layering rich colors and textures with exotic and organic elements transforms each of his spaces into an inviting, modern and unexpected environment. Jamie's highly regarded designs have been featured in over 40 publications world wide including Architectural Digest, Interior Design, Casa Vogue, Dwell, Los Angeles Times as well as several coffee table books.



Lanciano Design

Lanciano Design was founded in 1987. Their projects are considered the highest brand name elite design, prestigious and individual. Design and Architecture office for people that understand the difference. For those who want the best, Originality and Taylor made.

The passion for their work leads us to innovate in every house. The warm atmosphere, the patience and the mutual affection create special relationships with their clients.

They always maintained a young, creative and dynamic design team. Their aim is to succeed together as a group. They are capable of providing a final and accurate look of projects before they even start to build it, due to their highly detailed plans.

In their design and architecture there is no room for mediocrity.

Their motto is "The end should start at the beginning", the results are their mutual success.



LASSALA+ELENES Arquitectos

LASSALA+ELENES Arquitectos makes use of the wall as a limit of space, pulling it out of anonymity and revealing it with the deaf voice of light, so as to rightly fulfill a spacial function, and making appear the visible difference between architecture and sole construction.

This is where architects Carlos Lassala Mozo, Eduardo Lassala Mozo and Guillermo R. Orozco y Orozco take pledge, believing the wall as the true protagonist of architecture, and emptiness as the true protagonist of livable space.

Their pledge has taken the firm into winning several prizes and acknowledgements, such as the III Premio Estatal de Vivienda Residencial Plus Jalisco 2010 (III Jalisco State Prize for Residential Plus Housing 2010), the Golden Medal in the VI Bienal Iberoamericana CIDI de arquitectura & landscape 2012/ 2013 (VI Architecture and Landscape CIDI Iberoamerican Bienal 2012/2013), in the category of Sustainability, and recently winning the prize in Best Architectural Single Residence Mexico of the International Property Awards Americas. The firm has also obtained acknowledgements from Comex and the Jalisco State Architects College, in 2010, and from Villeroy & Bosch, all for the "S" House in 2012.

Lassala Elenes Arquitectos looks for a special solution always never different, but never always the same, providing a style of its own, from which emotions flow, but correctly complying with program needs." comments architect Carlos Lassala Mozo.



Metropole Architects

Metropole Architects was founded in 1997 by Nigel Tarboton. Tyrone Reardon joined the office in 2002, and became a partner in 2004. Our office is situated in Durban, Kwa-Zulu Natal, South Africa.

As a practice, Metropole Architects, are inspired by the energy of the city, as it unceasingly moves, radiates and evolves like a vast living organism. We aim to generate design that stakes out new territory, and explore ideas that are intuitive, inventive, exuberant and daring. Enthused by visionary architects like John Lautner and Santiago Calatrava, we aspire to create iconic and progressive architectural wonders that capture our collective imagination.



monovolume architecture + design

The architecture office monovolume has been working in the sector of architecture and design since 2003 piloting projects that go from urban design to interior design and furnishing.

Their fields of activity include feasibility studies, strategy, concept, consulting, presentation sketches, drafting, submission schedule, completion and detail planning, visualization, construction management, tendering, project control, cost control, cost-effectiveness, design, interior design, renewal concepts for villages and cities, outdoor installation design, town planning, development concepts, technical approvals, safety coordination.

Their workplace becomes an innovative scene. How is it possible to create an innovative site and how do architecture and design react thereon? Engagement – the common object is the way to succeed. Complexity – people who are faced with many impressions and opinions nowadays, need a well-linked mental activity which reduces complexity develops a sense for important factors and which is able to concentrate on synergies and contents.

As a matter of principle there exist no limits—from this consideration arise interesting tensions as well as astonishing points of departures and ideas for individual, unconventional architecture and fine design.



Montalba Architects, Inc.

Montalba Architects, Inc., founded in 2004 by David Montalba, AIA, is a full-service architecture firm nationally recognized for crafting thoughtful, design-driven solutions that are both contextual and conceptual. Embracing an internationally informed design approach, the Los Angeles-based firm's portfolio includes projects in the United States, Europe, and the Middle East. The firm's remarkable diversity—from award-winning single-family residences and commercial office interiors to restaurants, luxury retail stores, mixed-use buildings, and master planning—honors its belief in respecting the forces of material integrity, sculpting of natural light, and the purity of spatial volumes.



NICO VAN DER MEULEN ARCHITECTS

As an architectural practice that is well renowned throughout the African continent, NICO VAN DER MEULEN ARCHITECTS supplies creative solutions that are customized to suit each client's personal requirements. Through working closely with all its clients to ensure optimal satisfaction, the practice has accomplished astounding success in the design of upmarket residential homes. The company's innovative architectural vision is evident in its ability to continuously produce outstanding and artistic architectural designs that are personalized in accordance with the homeowners' lifestyle requirements.



Original Vision Ltd.

Original Vision was established by Adrian McCarroll in Hong Kong in October 1990 and over the past 20 years they have been pioneering new concepts in leisure architecture and design in South East Asia. Based in Hong Kong and Thailand and with projects throughout the region, the practice is dedicated to innovation, creativity and quality in their design and in their finished projects.

Original Vision's growing reputation is firmly based in solutions that precisely meet the client's needs, brought to life with the spark of ingenuity. The manipulation of space, light, texture and color is the core of their philosophy. They bring these elements together to harmonise with function and desire. Their goal is to create places that are wonderful; spaces that are breathtaking and inspirational and above all, environments where people love to be.

The growing trend towards hybrid hotel and resort models has produced opportunities that dovetail perfectly with the practice's core strengths and aspirations. Having established their name in the luxury residential market in Hong Kong and Thailand in the 1990s, Original Vision have gone on to create ground-breaking mixed use leisure destinations throughout South-East Asia.



Acknowledgements

We would like to thank all the designers and companies who made significant contributions to the compilation of this book. Without them, this project would not have been possible.

We would also like to thank many others whose names did not appear on the credits, but made specific input and support for the project from beginning to end.

Future Editions

If you would like to contribute to the next edition of Artpower, please email us your details to: artpower@artpower.com.cn