

**Beauty Salon. Nail - Studio**  
**Cut & Paste Nail Art Center**  
**Lily Nails - Nail and Eyelash Salon**  
**Cuts & Colors Aris Kalathakis Hairdresser**  
**Aesop Signature Store in Singapore**  
**Contiki Basement**



**Hotshot**  
**A+Z Loft House**  
**Paco's Tacos Eastland**  
**Celentano Ristorante(Hotel Ibis)**  
**Benni's Playland**  
**Design Wing**

I + + **I-PLUS** Interiors + Detail

**BEAUTY SPACE**

010



Interiors + Detail



**I-PLUS**

Interiors + Detail

**AXCEL E'LEVER Sano Shop**

**Monroe Make-up & Hair Lounge**

**Hugs x Kisses Nail Bar**

**TRIBAL ACT**

**Moss Salon**

**QG Tattoo Studio**



**I-PLUS**  
Interiors + Detail

**BEAUTY SPACE**

party/space/design

Yongho-Dong Metro City  
Wind Hill Hotel



No. 010



# Benni's Playland

*monovolume architecture + design*



The architecture office monovolume has been working in the sector of architecture and design since 2003 on piloting projects that go from urban design to interior design and furnishing.

The architects met at the faculty of architecture at the university of innsbruck where they have already collaborated and worked together on projects. the participation at several national contests has given them the opportunity to carry out a number of successful projects which was the foundation of the actual teamwork and the beginning of the mutual professional activity. Their workplace has become an innovative scene.

**Location** Ingolstadt, Germany

**Area** 3,500m<sup>2</sup>

**Design** monovolume architecture + design

**Designer** Benjamin Gaensbacher, Arnold Schober, Diego Pregonella, Luca di Censo

**Structure** Office of structural engineering Heubl

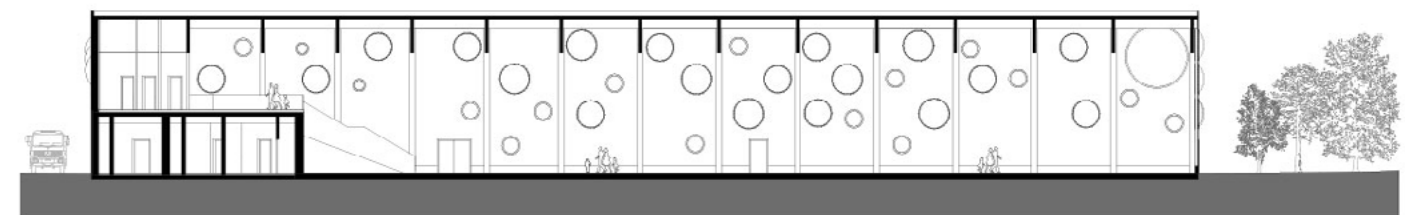
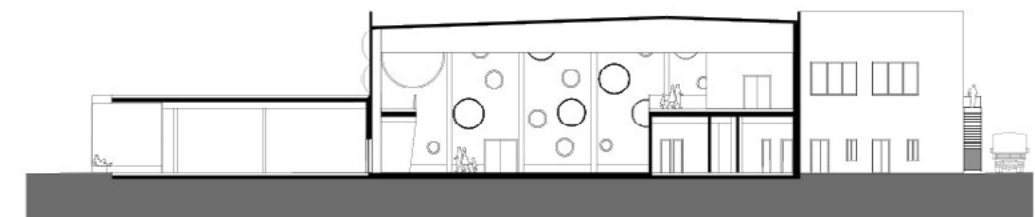
**Photographer** Daniel Schaefer

The new indoor playground for children in Ingolstadt in Germany consists of an entrance building and the playground itself with a ceiling height of 12m. The main entrance is spread over 2 floors.

On the ground floor there are situated some shops, the wardrobe, offices and toilets. In the main room there is a nursery for children, some slides, trampolines, a track for toy cars and a climbing area.

Upstairs over the indoor playground, there is an outdoor terrace and also other attractions for the kids, for example a 'reading corner' and a small cinema.

From the architectural point of view they are used different materials and colors for the construction of facades of the two buildings. Round and colored windows on the facade of the hall seem to be smarties on a cake.



Section





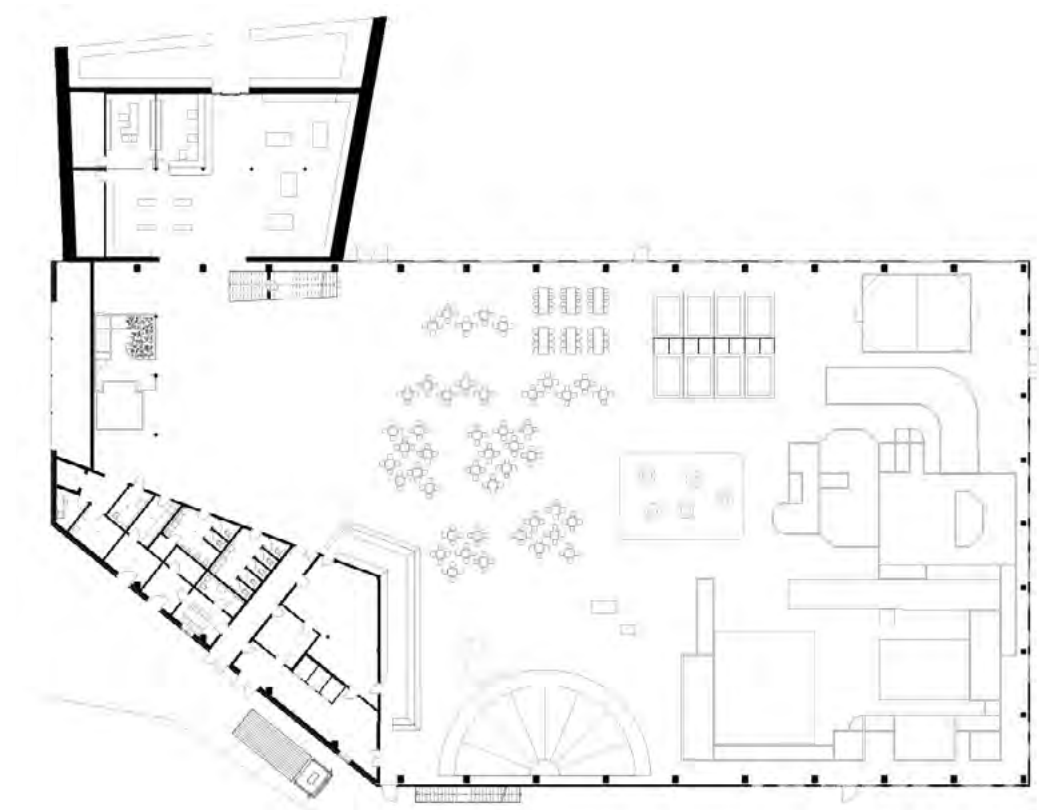
독일의 잉골슈타트에 새롭게 마련된 실내 어린이 놀이터는 건물 입구, 12m 높이의 놀이터로 구성됐으며, 주 출입구는 두 개 층에 걸쳐있다. 1층에는 일부 매장과 옷장, 사무실, 화장실이 위치해 있고, 주요 실에는 어린이를 위한 방과 미끄럼틀, 트램펄린, 장난감 자동차용 트랙, 그리고 클라이밍 영역이 배치됐다. 또한, 실내 놀이터 위층에는 실외 테라스와 '독서 코너', 소형 영화관과 같은 명소가 마련됐다. 구조적 관점에서 보면, 두 건물의 정면에는 다양한 소재와 색채가 사용됐는데, 홀 정면의 등글고 다채로운 색상의 창은 케이크 장식을 연상시킨다.











Ground Floor Plan

