



这里有全世界最多最优秀的设计师

找设计 请联系 **0755—25466634**

您可以直接拨打我们的电话

我们将为您找到 **最适合自己的设计师!**

免中介费

室内公共空间

INTERIOR PUBLIC SPACE

2010年4月第2期 总第4期

# 室内公共空间

INTERIOR PUBLIC SPACE 2010年4月 第2期



奥雷斯塔德预科学院  
Orsted College

BLOSSOMY SHOP

花样店铺

Octium珠宝店 / Parapharmacy Appiano药房 / 天陈SUGAHARA商店  
“鞋盒子”鞋店 / United Nude鞋店 / Micasa Volume B / 梵雅羽绒服旗舰店

爱·设计——Kathryn Scott、邱春瑞

快递: Patrick Norguet 森田恭通 Concrete Architectural Associates 朱柏仰

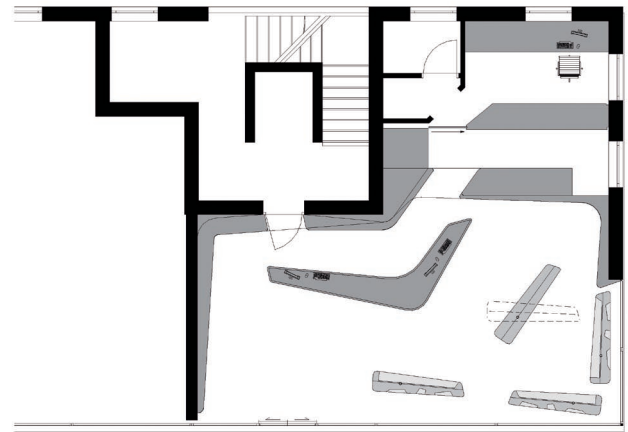


总第4期 RMB: 68.00元





1



项目平面图



2

重——药品橱柜上，其线条穿透了所有的摆设。室内空间的周边上围绕着壁架，形成了一块宽阔的展示区域。上面的水平线条连接在一起，在视觉上拓宽了空间，并勾勒出一个特制的Corian柜台，如同动态的焦点，在白色水磨大理石地板映射的光带上浮动。对于一个小城的药房，这样大的柜台可以为顾客提供适当的医疗诊断和最为周到的服务，而且它高度曲线的造型也避免了给顾客造成强硬的印象。绕墙旋转的药架延伸至地板和天花板之间，一些面向橱窗的壁龛向室外展示药品。这些单元的高度设计都很好地内部的情况遮蔽起来，同时又没有削弱空间的整体感觉及建筑内部的采光。

为了将顾客的注意力转移到色彩缤纷的药品上，设计师在背景中使用了整块漆成白色的中密度纤维板。天花板上设置了圆形的壁灯，打开灯，一个个圆形的突起在白色的墙面上晕染出漂浮的感觉。空间上下充盈着均匀的光线，药房则好像在它展示的药品背后完全消失了。

整个设计透着宁和的气息，圆滑的墙角和柜台避免了尖锐的硬角，既保证了安全问题，又给人柔和的心理感受。纯白的色彩则让空间显得优雅高档，而色彩丰富的药品在其中也不会有杂乱无章的感觉，反倒避免了纯白色彩带来的枯燥感。这个药店不只是卖药的场所，更是安抚焦躁情绪的心理疗室。

1. 柜台底部的灯光打开，整个柜台便成为一个漂浮的孤岛
2. 弧线形的设计让药房流露出淡淡的温馨雅致
3. 白色的圆形壁灯像一个发光的圆环，散发出柔和的光芒

# PEACE IN PSYCHOLOGY

Parapharmacy Appiano

安定，由心而生

Parapharmacy Appiano 药店

设 计 师：Patrik Pedó、Juri Pobitzer  
设计公司：Monovolume Architecture + Design  
公司网址：www.monovolume.cc  
摄 影 师：Piero Perra  
建筑面积：85平方米  
项目地点：意大利

Patrik Pedó、Juri Pobitzer

出生于意大利，都在奥地利因斯布鲁克大学建筑学院学习建筑，并以kjetil Thorsen建筑教授为导师，完成学术研究。曾与梅兰、伯岑、因斯布鲁克与格拉茨的几个建筑公司合作，并取得过与建筑师Volker Giencke的合作。



想要在药店设计中达到功能与美观兼具的效果其实并不容易，至少在形式上很难实现。但似乎这一点并不适用于南蒂罗尔地区。因为在这里，在Eppan城中心新建的一栋建筑物中，一个满足最高设计标准的药房诞生了。

因为受到场地面积的限制，来自Monovolume的执行建筑师尽量节约并谨慎地运用空间。于是，这个设计概念贯穿了所有药房设计单元的重中之



3



Satisfying functional as well as aesthetic demands is not exactly easy for the pharmacy business, at least not in architectural terms. Things are apparently different in South Tyrol. Here, in a new building in the centre of Eppan, a pharmacy has been built that actually meets the highest design standards. Due to the limited floor area, a thrifty and well-considered use of space was essential for the executing architects from Monovolume. The concept therefore has its origins in every pharmacy's holy of holies—the pharmacist's cabinet, whose lines penetrate all the furnishings. Shelves around the edge of the interior are used to create copious presentation areas, whose horizontal lines embrace and visually enlarge the space and provide a setting for a tailor-made Corian counter, which seems to float as a dynamic focal point on a band of light above the white marble terrazzo floor. Due to its unusual size for a village pharmacy, this simultaneously enables appropriate consulting activity and maximum discretion, while the unusual, highly curved shape prevents it from having a too powerful effect. Pivoting shelves are tensioned between the floor and the ceiling and present



niches for displaying selected products on the side facing the window. Their heights are determined such that they restrict the view from outside without lessening the generous feeling of space or amount of light entering the building. In order to direct the attention of customers to the mostly colourful products, the entirely white furnishings made from painted MDF retreat into the background. The ceiling is set with rounded the wall lamps. When the lights are turned on, these rounded protrusions on the wall create a sense of floating. Balanced

lighting throughout allows the pharmacy seemingly to disappear entirely behind its products. The overall space is permeated with peaceful air. Slick corners and counters avoid the sharp angles to ensure the safety and also offer soft and bland psychological feels. Pure white colour makes the space graceful and top-qualified. Diverse coloured medicine doesn't appear messy, but eliminates the dullness of pure white colour. This pharmacy shop isn't only for the pharmacy sales, but also a mental therapy to appease anxiety and annoyance.



- 4. 整个柜子被穿在一根细细的柱子上，是一种新奇的尝试
- 5.6. 琳琅满目的药品为整个白色的空间增添了浓墨重彩的一笔
- 7.8. 高大的药柜组成药房的仓库，诸多的抽屉方便药品分门别类地存放
- 9. 弧形的灯带配合流线型的柜体，让室内充溢着安定温馨

