

国际新建筑

February 2012 NO.7  
Price: RMB 98-USD 29

I  
N  
A

International New Architecture

Feature 專題

Latest AIA Awards Recipients

最新AIA獲獎作品精選

江苏人民出版社

International New Architecture

國際新建築

Latest AIA Awards Recipients

最新AIA獲獎作品精選

February 2012

7

Volume 3



Blaas **General** Partnership

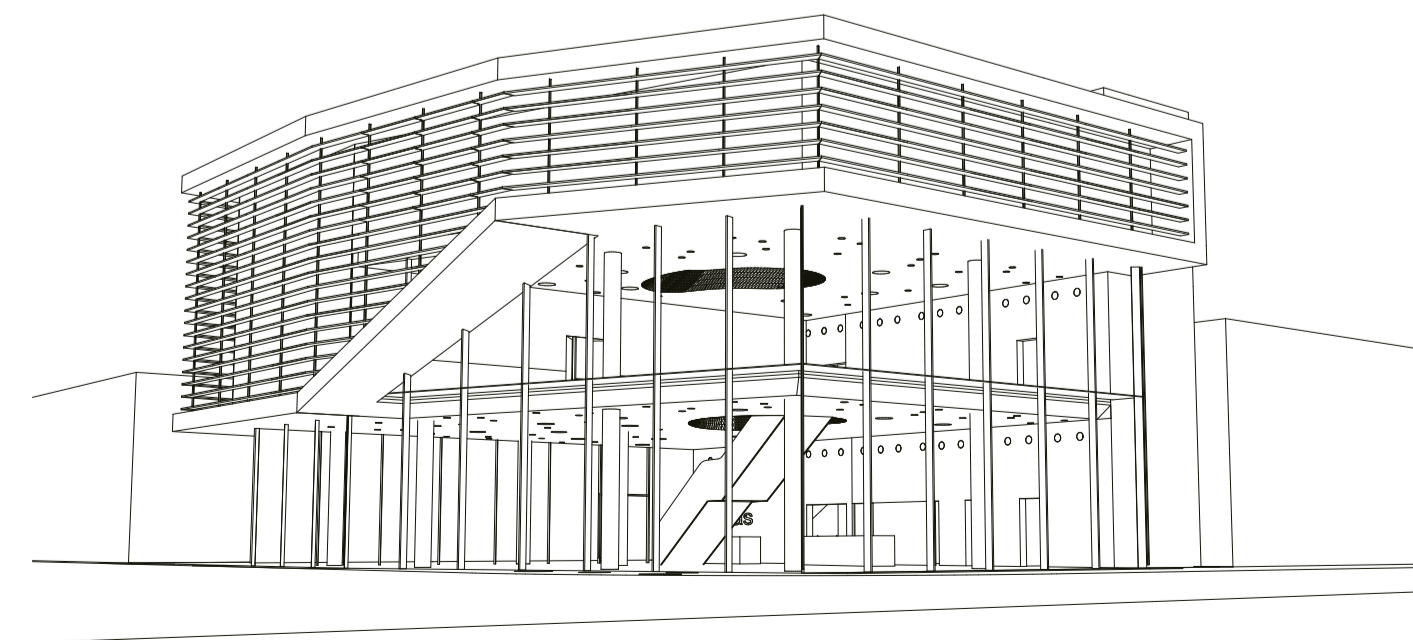
简约纯净之美

monovolume architecture + design

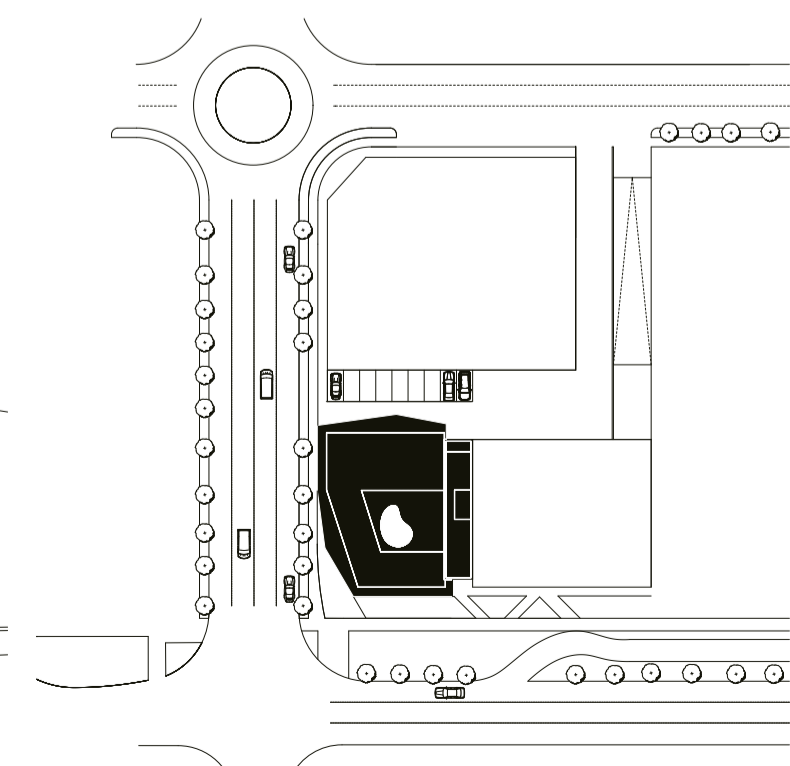


玻璃立面为室内空间提供了最大的能见度和透明度  
The glass façade provides a maximum of visibility and transparency

透视图  
Perspective



总平面图  
Site plan



从外面即可看出内部清晰的区域划分  
Clear and formal internal division be perceived already from the outside



位于波尔查诺的Blaas General Partnership是一家电动机械产品公司，该公司的新总部大楼展现新产品系列的同时也提供维修服务。建筑一楼内设有销售部门，二楼设有展示区和维修工作室，所有的行政管理办公室都设在三楼。大楼结构给人的整体印象是一座单一的封闭式大楼。不过，大楼内部公共区和私人区的分界还是很明显的。客户在外面就能够很清晰地看到内部区域的划分情况。建筑北面是玻璃立面，能够为销售区和展示区

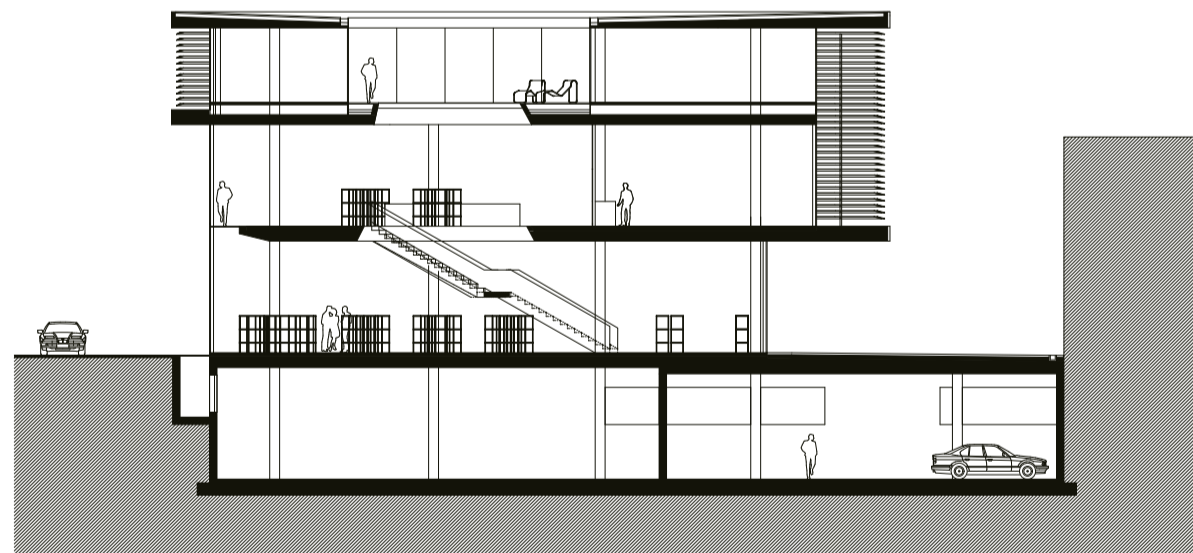
提供最大的通透度。维修办公室、储藏室和办公室这些私人空间都靠近南、东、西侧的立面，三个立面都配有遮阳系统。为了实现自然采光与空间的发展和规划之间的最佳关系，建筑师在大楼中央设计了一个采光入口大厅，大厅内还包括一个室内庭院。绿色的露天空间能让二层的行政管理区拥有充足的自然光线，另外也为员工提供了一个安静的、受保护的娱乐区。





栏杆和墙壁的绿色给人一种清新的感觉  
The green of railings and walls make the interior seem fresh

截面图  
Section



温馨的室内环境  
The warm interior

The company Blaas in Bolzano is specialized in electro-mechanics. In the new head office the company presents its new product range and offers repair service.

On the ground floor of the building there is the sales division, on the first floor the exposition area and the repair shop. All administration offices are located on the second floor. The overall impression of the structure is a homogenous and closed building. Nevertheless, there exists a separation between the public and the private sector. The client can perceive this clear and formal internal division already from the outside.

The glass façade on the northern side provides a maximum of visibility and transparency to the exhibition and sales area. The private spaces such as repair offices, stockrooms and offices have their façades exposed to the South, East and West which are protected with a sun screening system.

In order to establish an optimal relation between natural light, development and planning of spaces there has been created a luminous entrance hall in the center of the building with an inner courtyard. This green open spot permits the administrative sector of the second floor to receive ample natural light and at the same time it generates a protected, quiet recreation area for the staff.

绿色的玻璃立面使得内部能够受到充足的自然光线照射  
The green glass facade enable the interior to receive ample natural light





玻璃地板将楼下的一景物呈现在眼前  
The downstairs can be seen through the glass floor

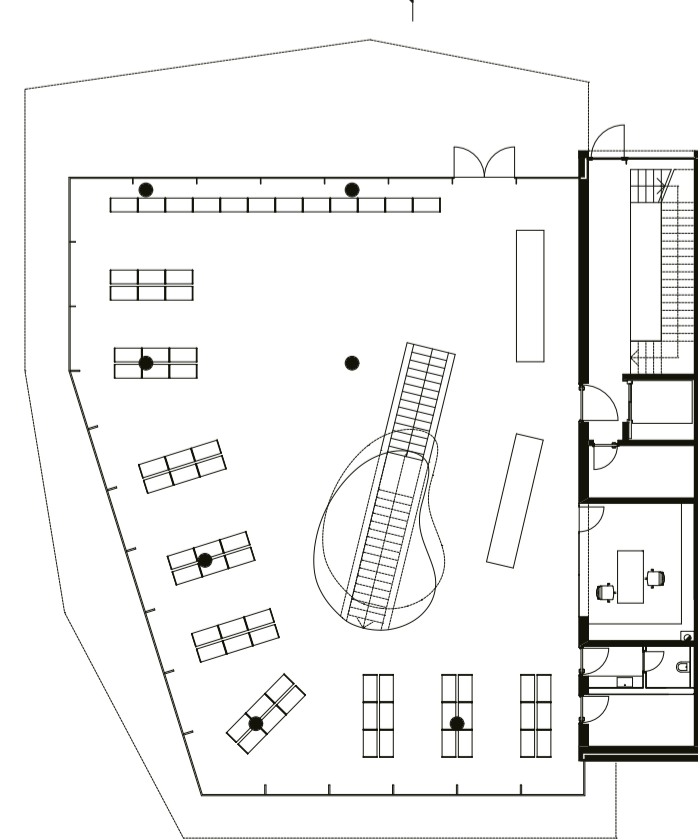


楼梯简约中又带一种独特的魅力  
The stairway is simple yet unique

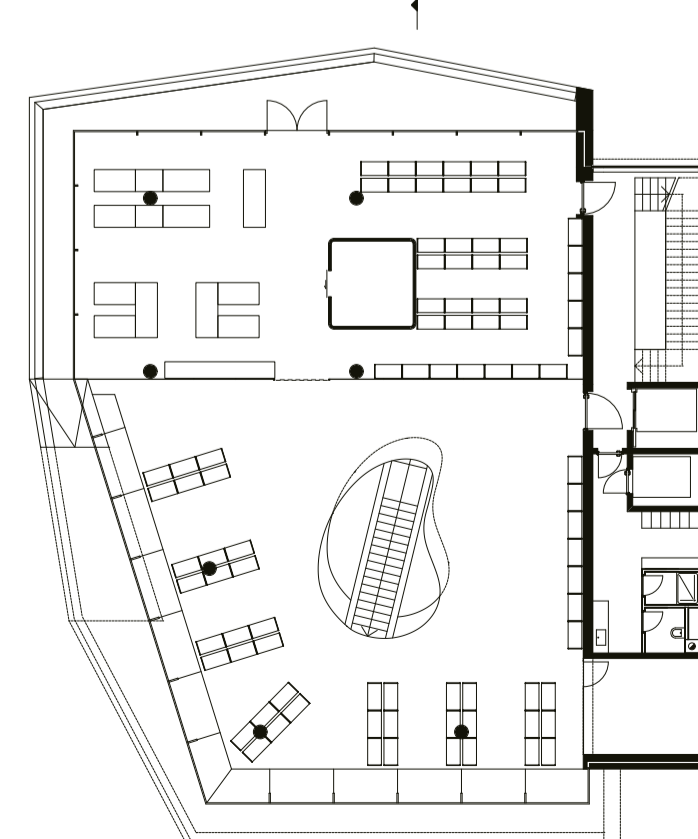


内部区域划分明确  
The interior shows clear division

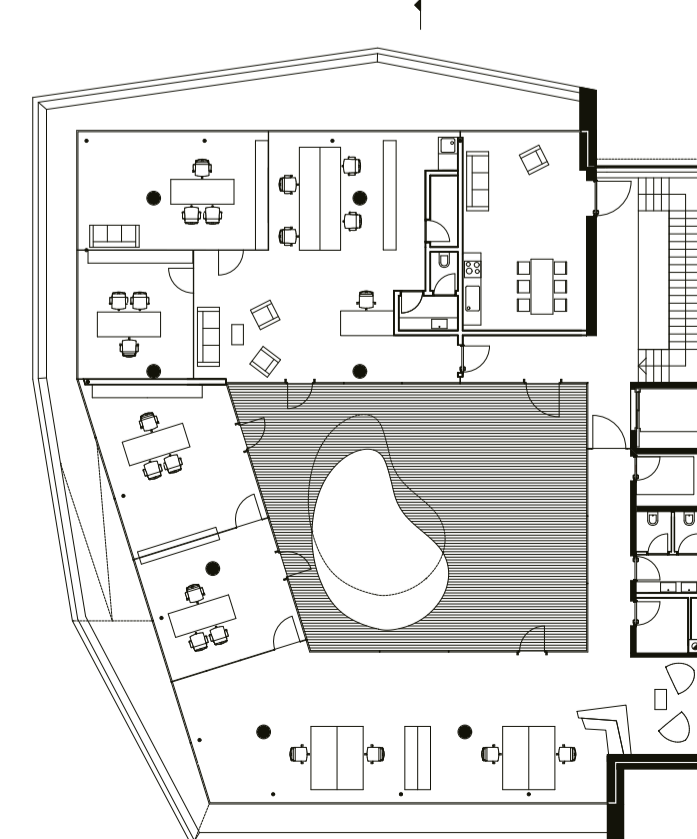
一楼  
Ground floor



二楼  
First floor



三楼  
Second floor



坐在办公桌旁可以欣赏外面的风景  
At the office table one can enjoy the views outside

#### Credits

Location: Bolzano, Italy  
Completion Year: 2007  
Volume: 11,000 m<sup>3</sup>  
Building Area: 1,250 m<sup>2</sup>  
Program: commercial building  
Architects: monovolume architecture + design (Patrik Pedó, Juri Pobitzer)  
Architectural Staff: Arch. Christian Gold, Arch. Barbara Waldboth, Thomas Garasi  
Structural engineers: Baucon Bozen (Ing. Neulichedl Simon)  
Photographer: Oskar Da Riz



楼梯细部  
Detail of stairway