

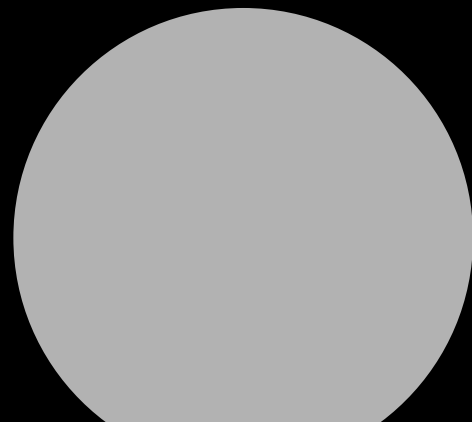
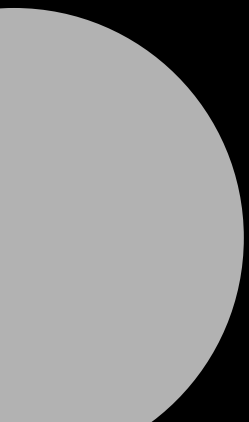
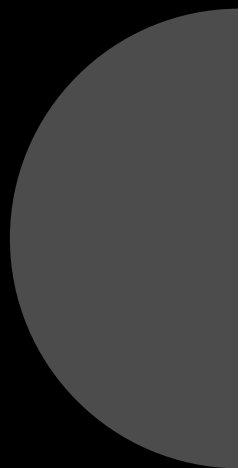
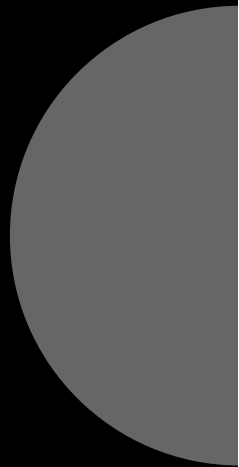
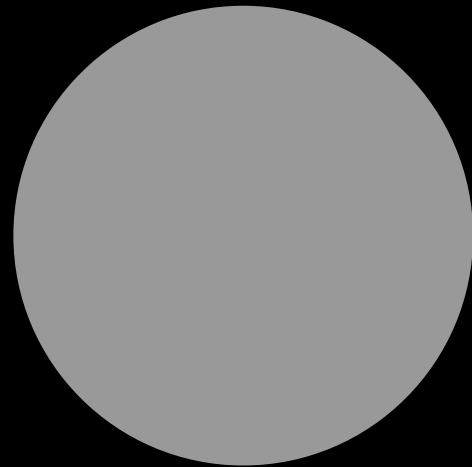
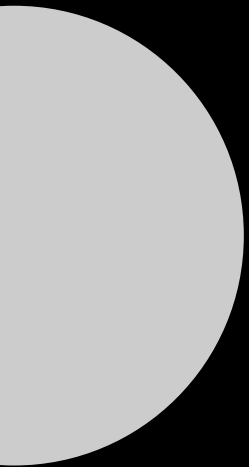
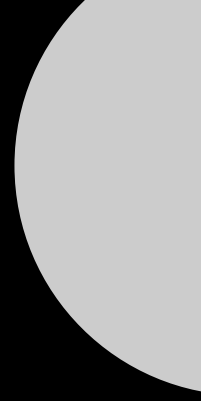
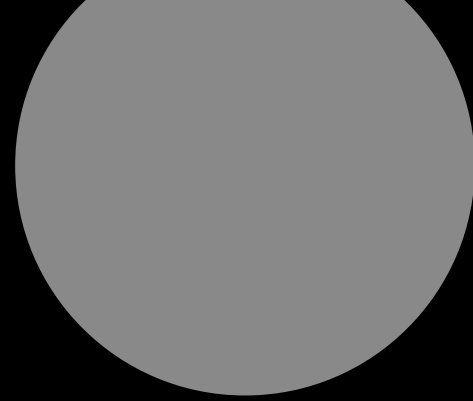
FASCINATING ARCHITECTURE

World Public Architecture 世界最新公共建筑

高迪国际出版（香港）有限公司 编

大连理工大学出版社

Dalian University of Technology Press



Antonio Vaillo + Juan Luis Irigaray VAILLO+IRIGARAY ARCHITECTS



Multifocality offers solutions to every raised problem, and sets up a functional hierarchy as well as a wide capacity for shape synthesis. Constant collaboration with every agent of the complex process provides a global vision and the appropriate solution, which is also enhanced by different outlooks.

Only from the very definite is feasible to offer universal solutions. It is thus that our working method consists of the resolution of the problems raised by the project itself. The work material is, as it has been explained, the prime mover, the basis, the project concept and the essential raw material.

Our work system is based on our relationship with the client and the interplay between all intervening agents. That is precisely what shapes our projects: our project work material is the project itself, as well as its specific circumstances: location –weather and geography, place culture, client, public demand, economic data, expectations.

We fell at ease working and operating with those materials that frame the take-off point of the project. Our work approach does not “impose” any solution to the architectural project. On the contrary, the points of departure are the ones that shape the final project in its own manner, so that any other place, any other client or any other circumstances, lead to a different proposal.

VAILLO+IRIGARAY ARCHITECTS is interested in taking part in this contest to propose innovative solutions for new “architectural hybrids”, capable of containing new uses and programmes: art, dwelling, retailing, offices... as well as setting flexible buildings, ready to host new deployments permanently providing a “living organism”, capable to adapt easily to the wind of change. We have a history of materialising complex hybrid buildings with great functional, formal, iconographical efficacy.

Essentially, our way of acting relies on the integration of complex, diverse programmes into efficient, logical, adaptable, poetical architectural structures; we try to join functional logic and shape poetry together, searching, as begetter concepts, physical, social, cultural relationship with the environment and its own distinctive soul that makes it unique.

Multifocality为提出的每一个问题提供解决办法，并设置了一个在功能上层次分明涵盖广泛的综合体。它与每一个复杂个体的不断合作，结合它变化的外观一起提供了一个具有全球视野并合适的解决方案。

唯一非常确定的是，提供普遍的解决方法是可行的。因此我们的工作方法包含由项目本身引起的问题的决议。工作材料正如它已经解释过的，是原动力，是基础，以及项目概念和本质上未加工的原材料。

我们的工作系统是建立在我们和客户及相互影响的所有中介的关系上，这恰恰塑造了我们项目的内容：我们的项目工作材料是项目本身，也是它特定的环境：地点——天气和地形、地方文化、客户、公众需求、经济数据、期望值。

对于制定项目分支点的材料，我们认为操作起来很容易。我们的工作方法是不强加任何的解决方法在建筑项目上。相反地，出发点是那些根据自身习惯塑造的最终的项目，所以在任何其他地方，其他客户，或者其他的情况下，都会导致不同的提案的出现。

为了对“混合建筑”的革新的解决方案提出建议，VAILLO+IRIGARAY建筑事务所对参加这个比赛很有兴趣，因为比赛包含新的用途和项目：美术馆、住所、零售、办公，以及灵活性的建筑，准备好为新的发展永久地提供“活体”，具有能适应任何风云变幻的能力。我们有带有极好功能性的、正式的、具有肖像功效的、混合的综合设施建筑悠久历史。

本质上，我们的行为方式是依靠综合设施的集成，把多种多样的项目变成有效率的、符合逻辑的、适应性强的、理想化了的总体结构。我们尝试加入功能逻辑和塑造意境一起，作为生产概念、物理的、社会的和文化的的关系，结合环境因素，以及它本来就与众不同的品质一起来让它变得独一无二。

Endo Shuhei

Endo Shuhei Architect Institute



Endo Shuhei today is groping for plausible ultra-modern architecture that can open up new possibilities by overcoming the self-imposed limitations of modernism in architecture that resulted from pursuing uniformity to excessive degrees, while taking advantage of its possibilities and effectiveness to the fullest extent. In modernism, architects broke down the whole of architecture into such elements as post, beam, roof, and wall, and reassembled these elements again. Limitations inherent to this kind of "composition" may be regarded as a major reason why modernism in architecture never gained real richness in its character. Therefore, this architect has experimented with non-compositional methods in two types of architecture. The first type was based upon questioning anew a fundamental premise of architecture, namely complete separation of interior from exterior. This type of architecture consisting of open spaces has been named, to use a neologism, "Halfecture".

In the other type, architectural spaces were created with a single element, that is, continuous strips of plate encompassing both roof and wall, not with the compositional elements obtained by breaking down the whole of architecture into its elements. This was called, in a similar vein, "Roofecture".

These buildings are concrete examples of an attempt at realizing possibilities of ultra-modern architecture. This concept had been realized in small-scale buildings such as a parking building for bicycles, a public lavatory, and an unmanned railway station.

These "Halfecture" structures encompassing ambiguous spaces were built with continuous, simple strips of steel plate only. This type of building points to a new possibility of building architectural structures. Many "Halfecture" designs have been realized with corrugated steel sheeting. This material is an industrial product manufactured by applying a wavy form to steel sheeting. These plates have structural strength, and are durable and recyclable because of their galvanized surface. They are well suited for assembling a structure on-site with bolts and nuts since they are produced in sheet form with standardized dimensions.

“The unspecified number of people experience the public building, and it is a valuable place to share the experience. In other words the times are made by this shared experience. In addition, it will be the role that every building takes in future. Therefore it is important I realize space offering a glimpse of the future to people, and to show at the same time to reflect now-the present of each times not reprinting a past.”-- Endo Shuhei.

由于过度追求角度的均匀性，而导致现代建筑自我强加的局限性，建筑师远藤秀平通过克服它来实现对超现代主义建筑的合理的探索，同时尽情地利用了当中的各种可能性和有效性。

在现代主义建筑中，建筑被分解成了梁、柱子、墙体、地面和天花等等各自独立的个体，然后再把它们重新组合。这些“组合性建筑”所固有的局限性被认为是现代主义建筑的特色和无法得到真正丰富的主要原因。所以，远藤秀平对两种类型的建筑用非组合性建筑的方法进行实验。第一种类型是在基于质疑的基础上，也就是对室内外空间的重新完全解构。这种由开放的空间包含的建筑类型，运用一个新词来命名，“半建筑风格”。

对于另一种类型建筑，建筑空间是由单独的元素创造的，也就是说，由屋顶和墙体的连绵不断的钢板组成的，而不是通过打破整个建筑而获得的构件的组合。这种类型的建筑，用相似的词组，称为“屋顶筑”。

这些建筑是超现代主义建筑的可能性实现的具体的例证。这些概念已经在一些小规模的建筑上得到实现，例如一个自行车棚、一个公共厕所、一个无人售票的火车站。

这些“半建筑风格”的结构包含了模糊不清的空间，它是仅由连绵不断的钢板的简单钢条组成的。这种类型的建筑表明了建立建筑空间结构的新的可能性。很多“半建筑风格”的设计都是由波纹钢来实现的。这些材料是由波纹钢板加工而成的工业材料。这些钢板因为其电镀的表层而具有结构强度、耐用性并可循环再用。他们是按标准规模生产的，因此配合螺旋螺母便能适用于实地的结构。

“大多数人都体验过公共建筑，这是一个可以分享经验的有价值的地方。换句话说就是通过分享经验来创造时代。此外，每个建筑都会成为被未来接纳的角色。所以对我来讲，很重要的的一点是我意识到空间为人们提供了对未来的瞥，同时反映现在，这是对各个时代的呈现，而不是对过去的再版。”——远藤秀平

CONTENTS 目录

Corporate

办公

- 010 Office Silo+Containers
- 020 ZMS Schwandorf Incineration Plant
- 030 Foro Europeo
- 040 TransPort - transavia.com and Martinair Headquarters
- 044 Rothoblaas limited Company
- 050 Blaas General Partnership
- 056 Darwin Center Phase II
- 064 I-way
- 070 Audenasa



Art & Culture

艺术与文化

- 080 The Extension to the Denver Art Museum
- 090 Surry Hills Library and Community
- 096 Bijlmer Park Theater
- 102 Tampa Museum of Art
- 110 The Research Library in Hradec Kralove
- 116 Zenith Amiens

- 122 Dendermonde Library + Social Restaurant + Multifunctional Space
- 130 National Technical Library
- 136 Lightcatcher at the Whatcom Museum
- 142 Natural History Museum of Los Angeles County
- 148 Congregation Beth Sholom Synagogue



Commercial

商业

- 156 MGM Mirage, Las Vegas, Nevada, USA
- 166 Atrio
- 174 MyZeil
- 180 Armani Ginza Tower, Tokyo



Hotel

酒店

- 188 SOF Park Inn Hotel Complex
- 196 HOF Vitoria
- 204 WISA Wooden Design Hotel
- 212 Akmani Hotel
- 218 San Ranieri Hotel
- 224 CitizenM Hotel Amsterdam City Center
- 232 Akmani Boutique Hotel



Education

教育

- 242 AP Møller School
- 252 Faculty of Law, University of Sydney
- 262 Vitus Bering Innovation Park
- 270 Orestad College
- 278 Ciss High School
- 286 The Langley Academy

Entertainment & Leisure

娱乐与休闲

- 296 Bubbleecture H
- 304 The Blakehurst Club
- 308 Sluňákov — Center for Ecological Activities
- 316 Arhus Gymnastics and Motor Skills Hall



Other

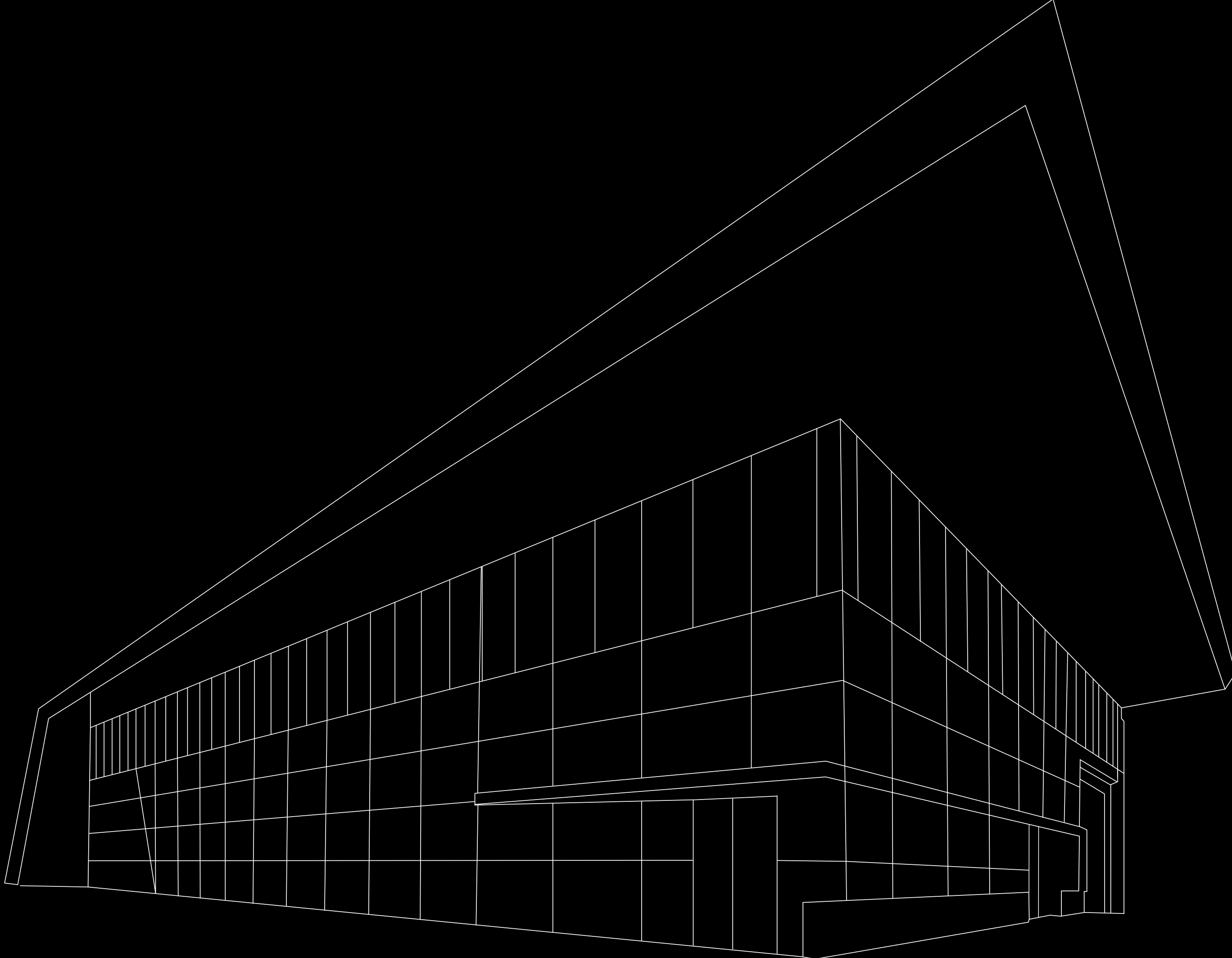
其他

- 324 Maritime Center Vellamo
- 336 Looptecture Fukura
- 344 Wooden Boat Center
- 348 Aurland Lookout
- 356 Emergency and Infectious Diseases Unit, SUS, Malmo



INDEX

索引



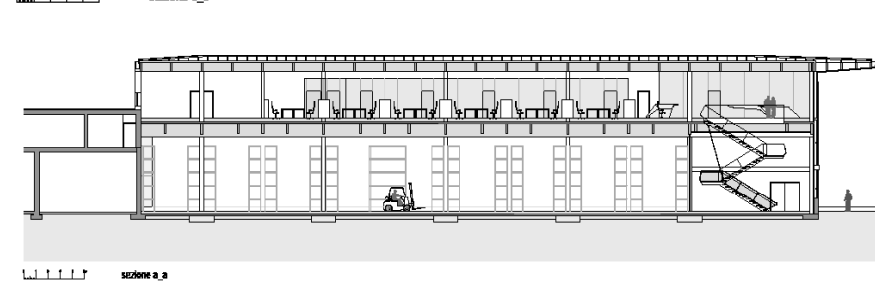
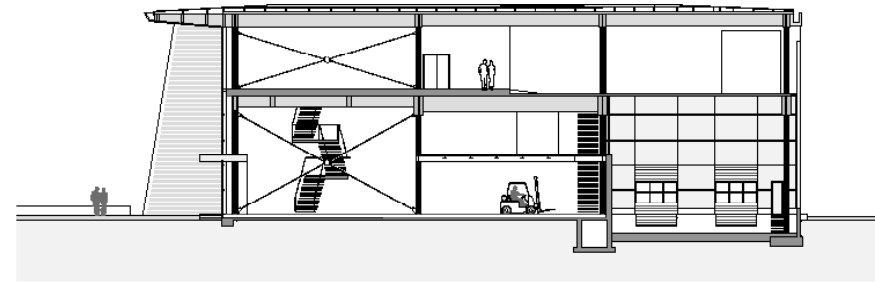
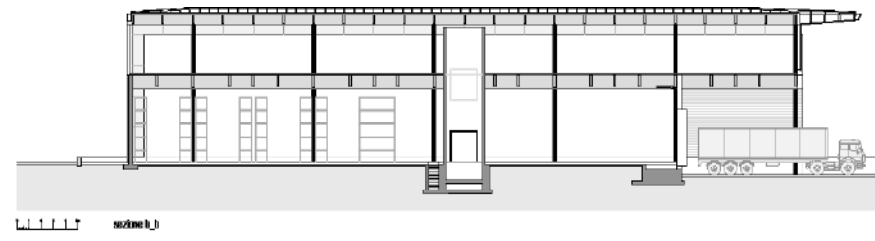
Corporate

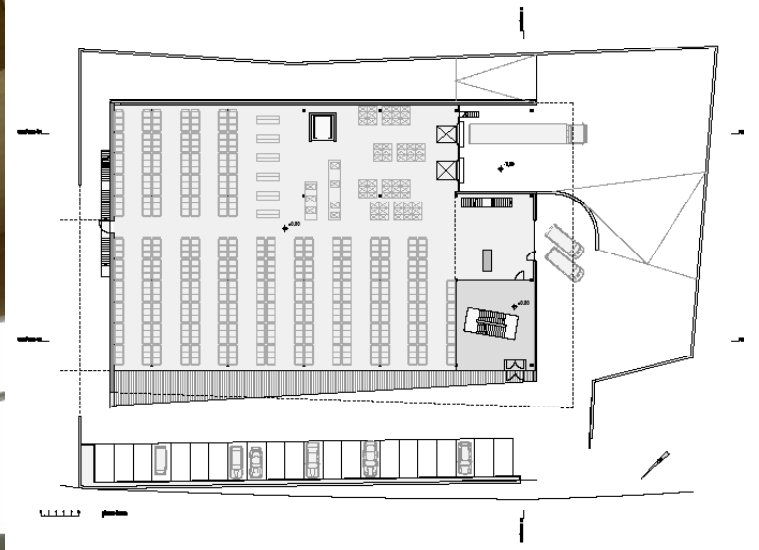
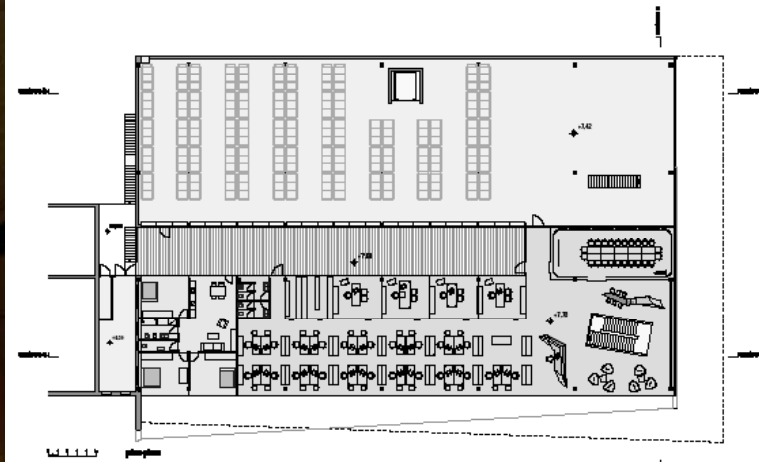
办公

Rothoblaas limited Company

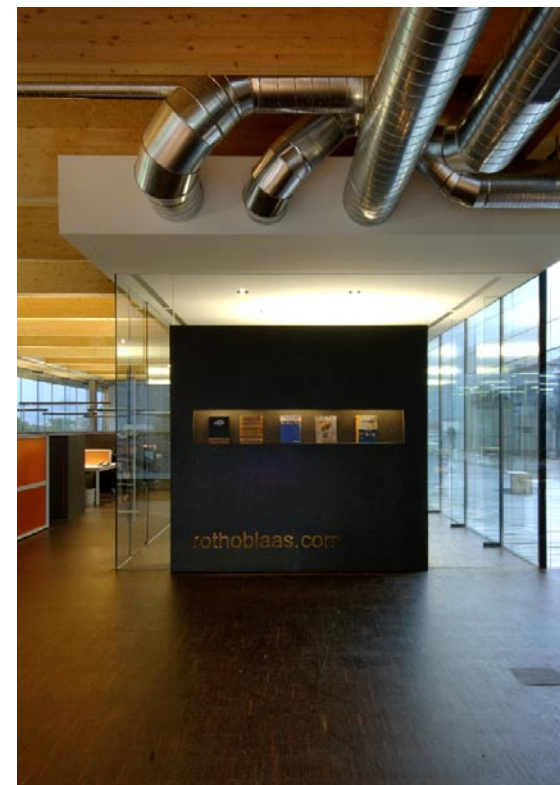
Architect: Patrik Pedó and Juri Pobitzer
Firm: Monovolume architecture + design
Location: Kurtatsch, Italy
Area: 3700m²
Photographer: Oskar Da Riz

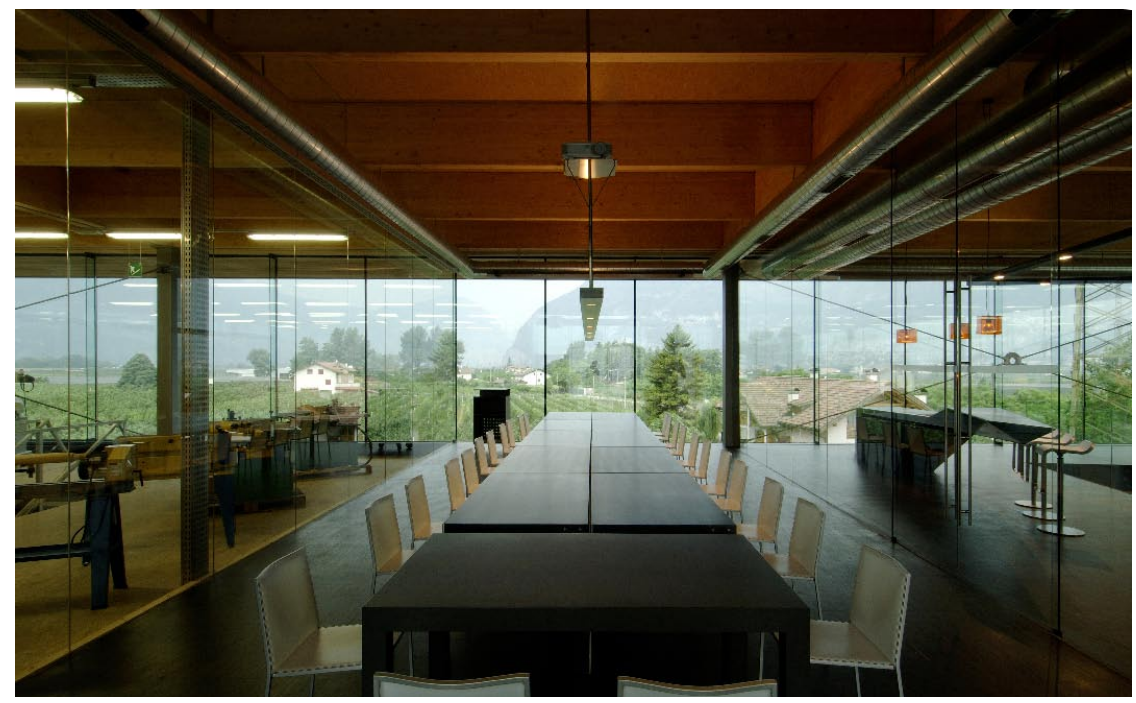
The "rothoblaas" office is a large-scale commercial operation specializing in assembling systems and power tools for the woodworking industry. Warehouse and commissioning are situated on the ground floor whereas administration, a meeting room and a showroom can be found on the upper floor. The aim of the project was to create a compact building with a high level of recognition. The contemporary of the company becomes a corporate identity of the enterprise. This has led to a functional, compact structural shell, provided with a glass envelope. The main building material employed is wood in order to show the own products.





Rothoblaas办公楼内的公司是一家经营木材加工行业集成系统和大型工具的大型商业机构。仓库和调试车间位于建筑的一层，行政室、会议室、陈列室位于二层。建筑高度紧凑，具有标志性。建筑的现代感成为企业形象的标识。建筑的玻璃外壳具有功能性和紧凑感。建筑使用的另一个主要材料是木材，以显示公司的产品。





Blaas General Partnership

Architect: Patrik Pedó and Juri Pobitzer
Firm: Monovolume architecture + design
Location: Enrico Fermi Street 18, 39100 Bolzano, Italy
Area: 1250m²
Photographer: Oskar Da Riz

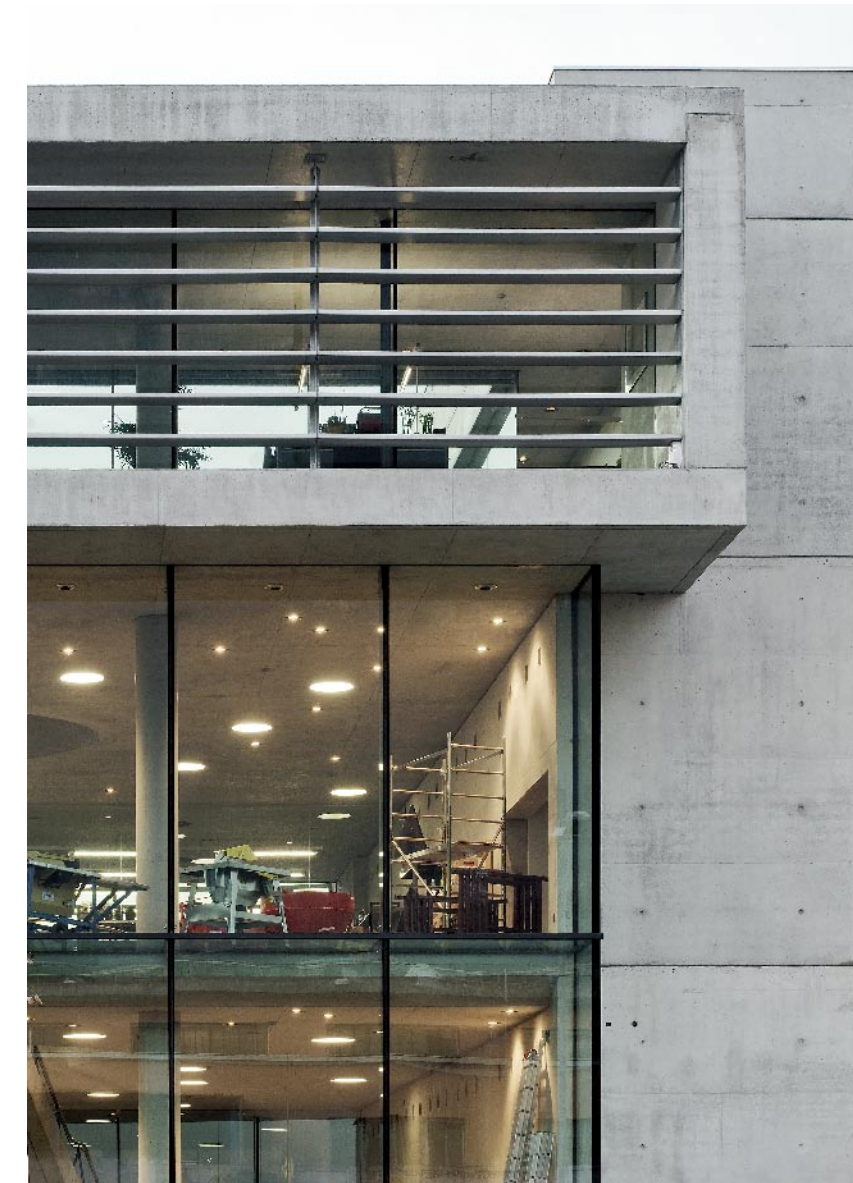
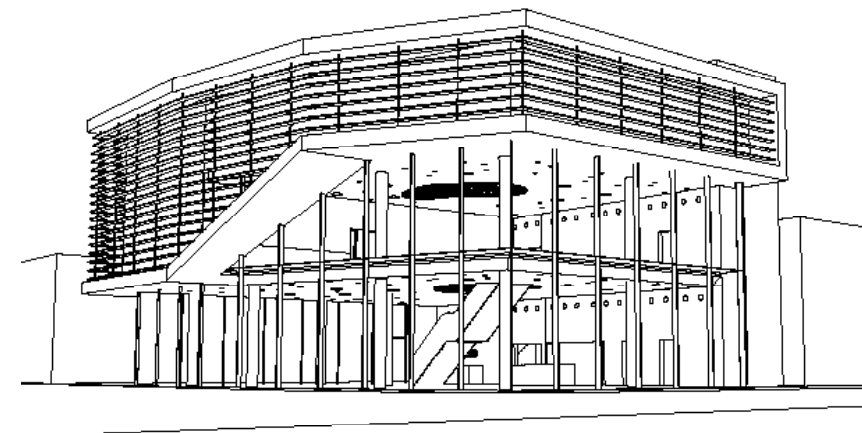
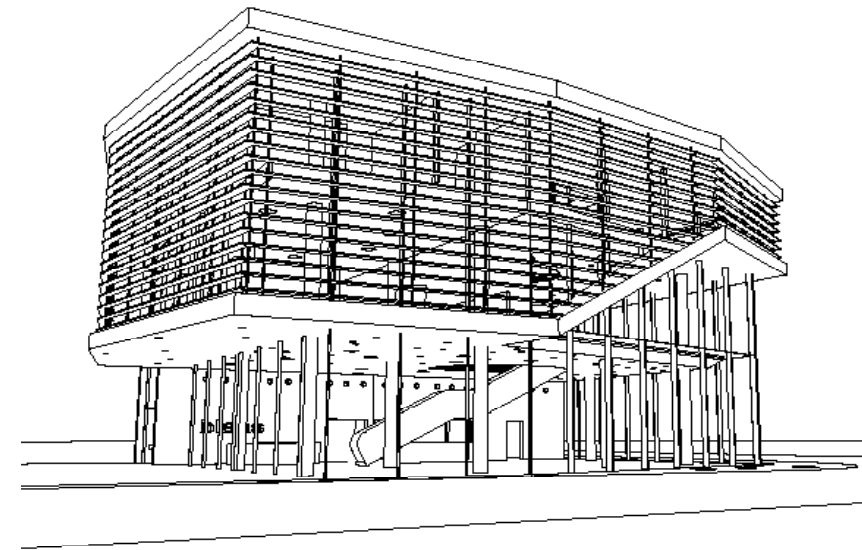
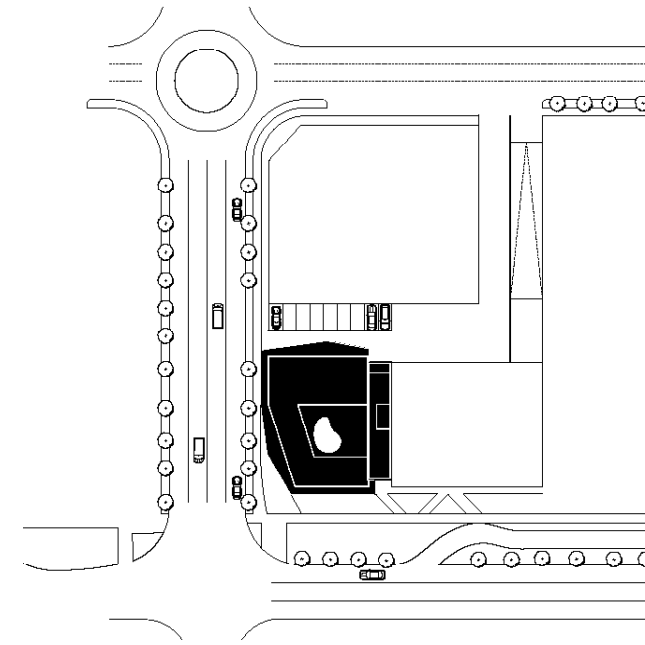
The company Blaas in Bolzano is specialized in electro-mechanics. In the new head office the company presents its new product range and offers repair service.

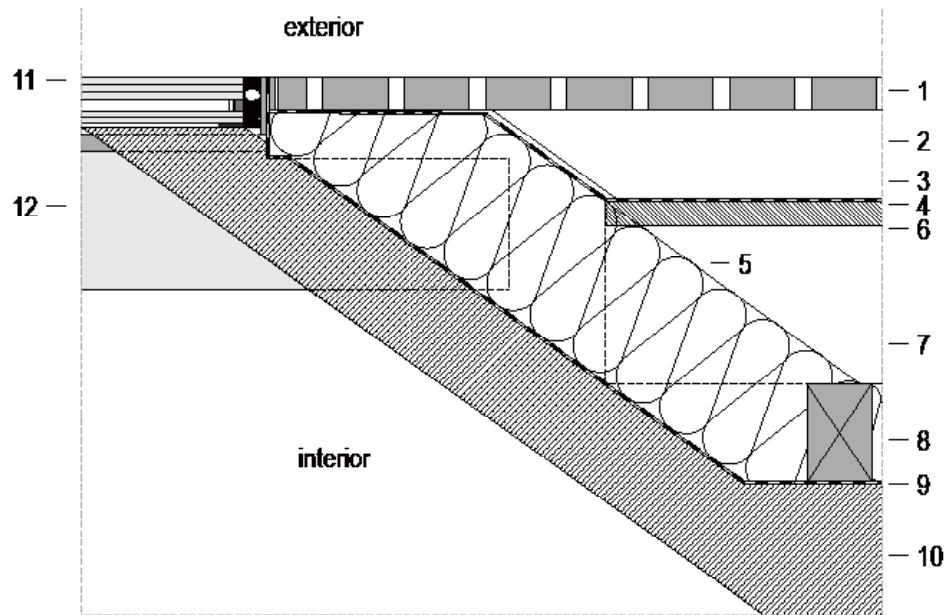
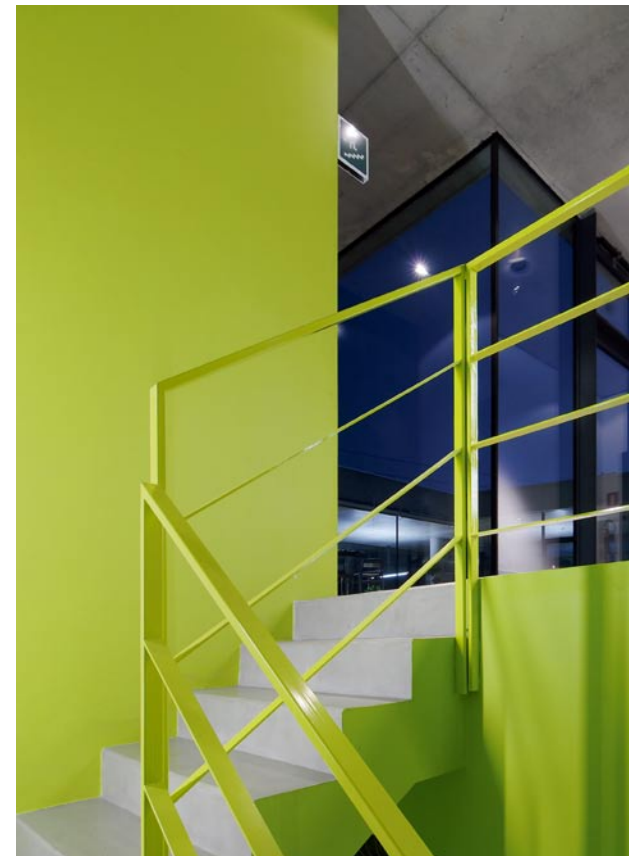
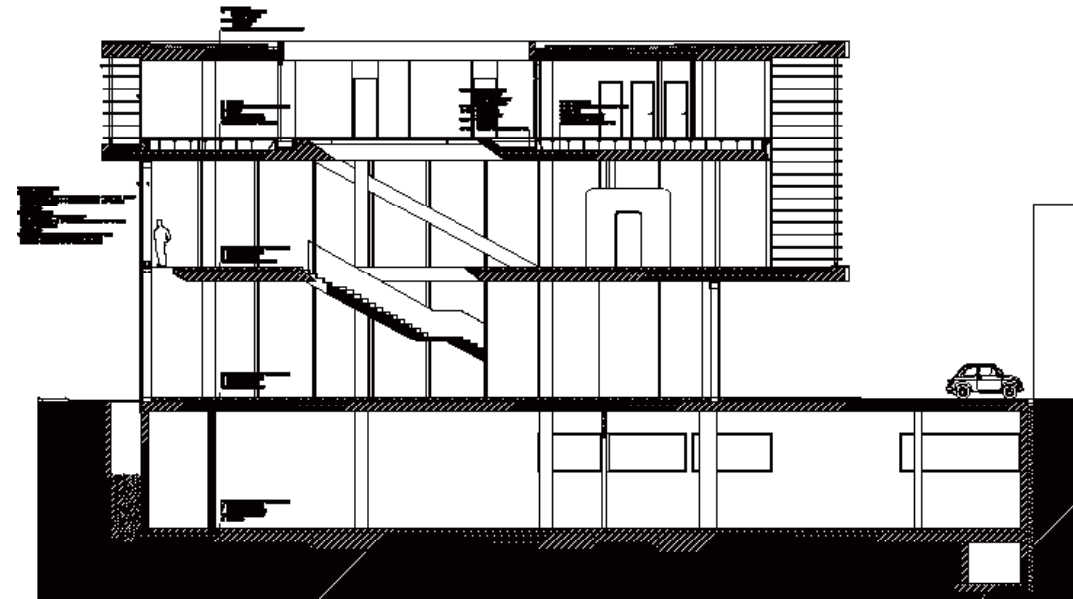
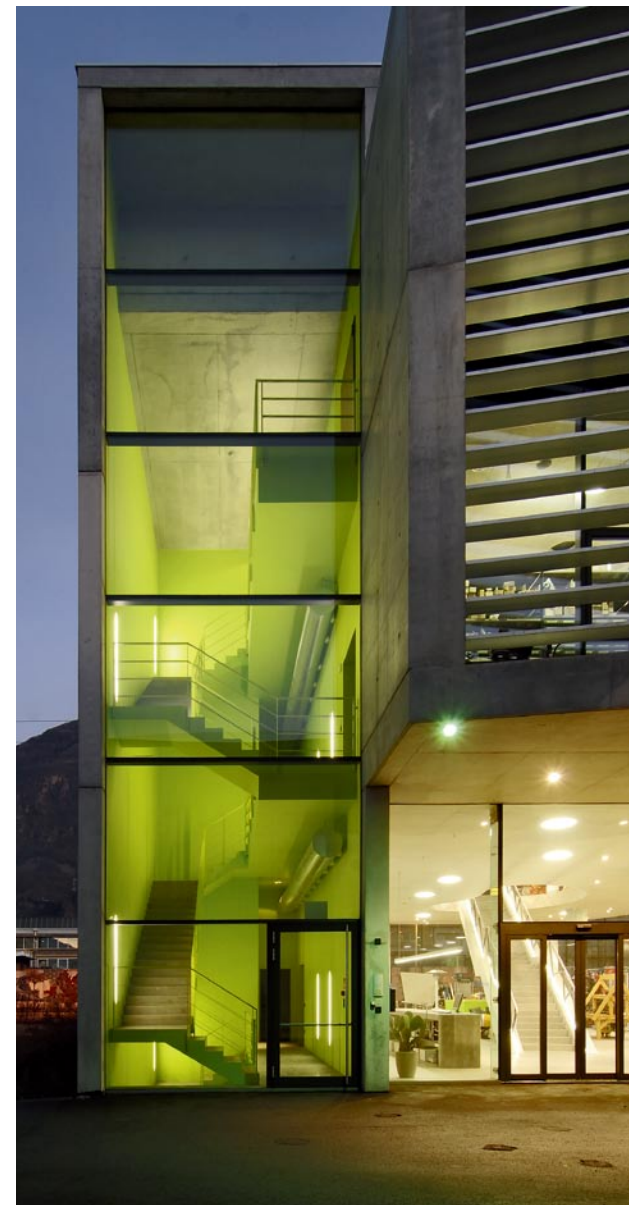
On the ground floor of the building there is the sales division, on the first floor are the exposition area and the repair shop. All administration offices are located on the second floor. The overall impression of the structure is a homogenous and closed building. Nevertheless, there exists a separation between the public and the private sector. The client can perceive this clear and formal internal division already from the outside.

The glass façade on the Northern side provides a maximum of visibility and

transparency to the exhibition and sales area. The private spaces such as repair offices, stockrooms and offices have their façades exposed to the South, East and West which are protected with a sun screening system.

In order to establish an optimal relation between natural light, development and planning of spaces there has been created a luminous entrance hall in the center of the building with an inner courtyard. This green open spot permits the administrative sector of the second floor to receive ample natural light and at the same time it generates a protected, quiet recreation area for the staff.

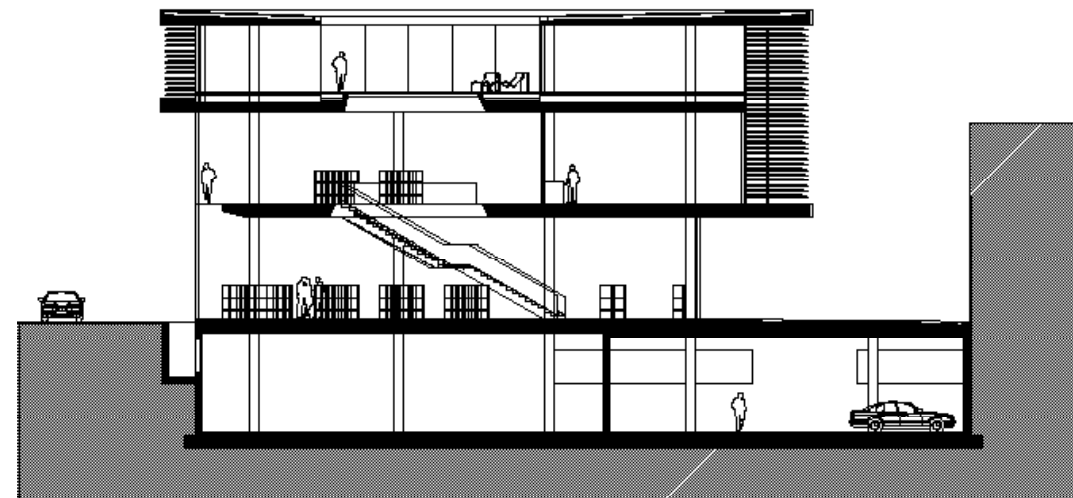


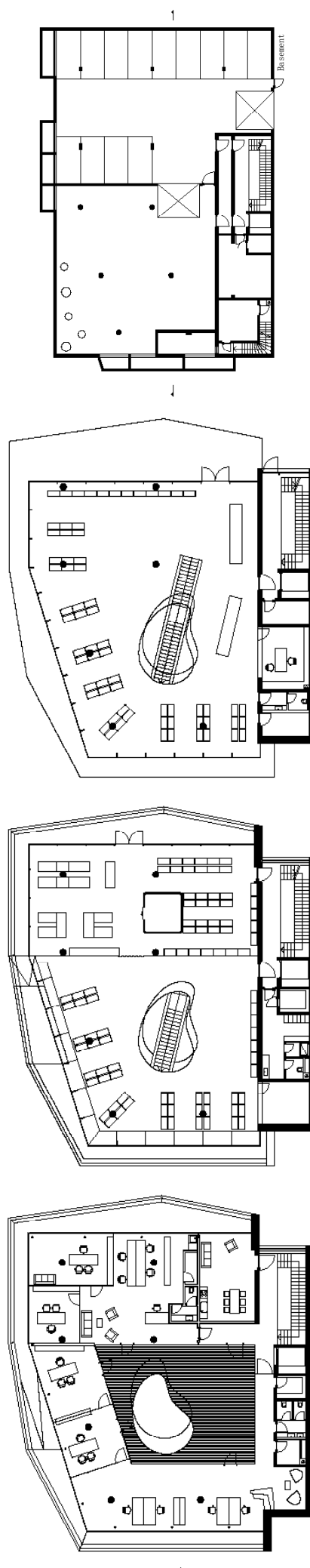
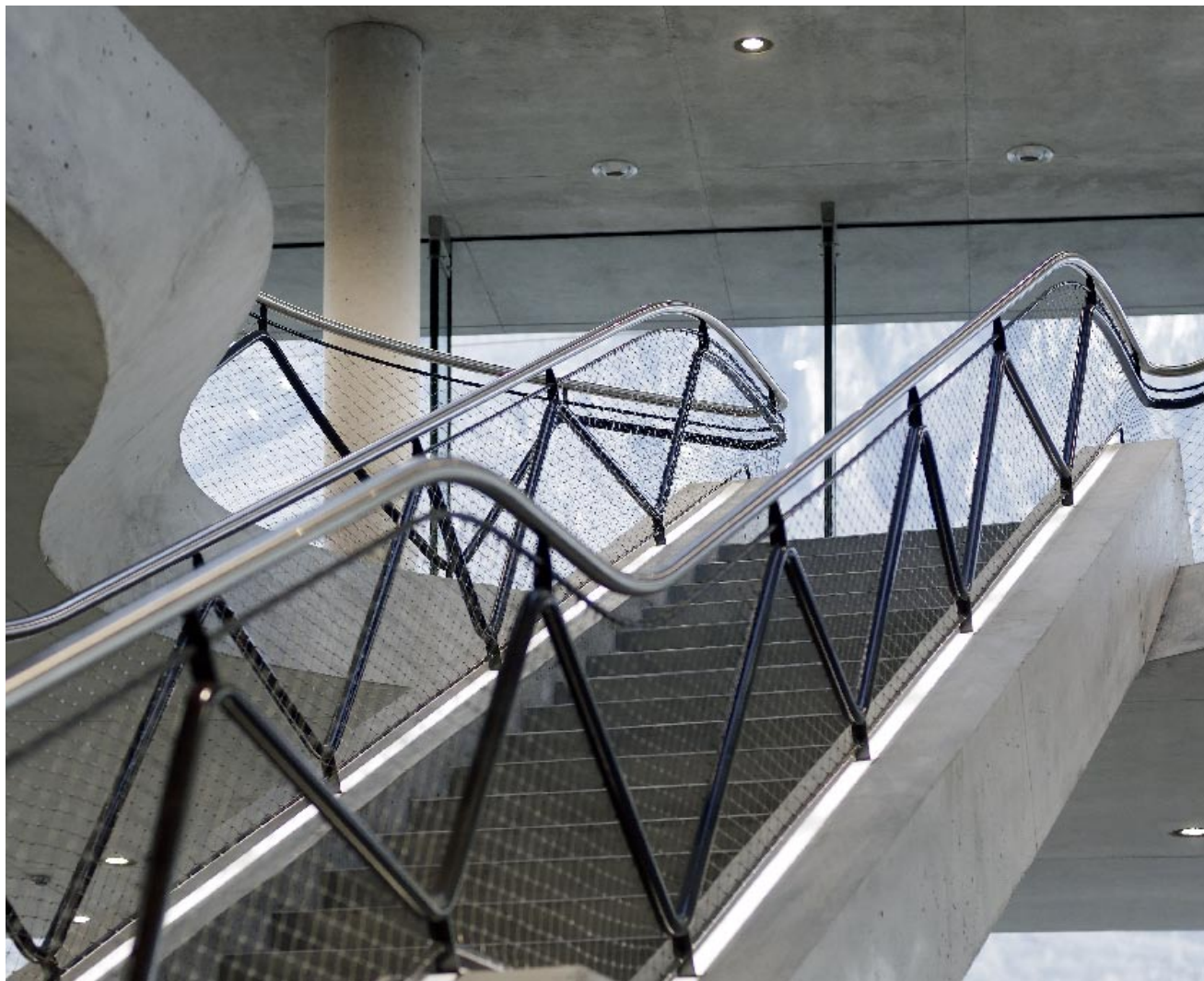


Skylight with horizontal glazing

Detail section

- 1 80x80 mm larch grating on bearers
- 2 slope square timber
- 3 protective separating layer
- 4 waterproof membrane Sarnafil G410 - 18
- 5 30 mm timber boarding
- 6 120 mm thermal insulation
- 7 slope square timber
- 8 80/120 mm wood boarding
- 9 vapour barrier
- 10 400 mm reinforced exposed concrete floor slab
- 11 structural glazing: laminated safety glass of heat-strengthened glass 6 + 6 - 15 - 15 - 5 + 5 mm / u_g = 1,1 W/m²K
enamelled edge strip, black, jointed with black silicone;
- 12 Steel beam T 60/160/10 mm



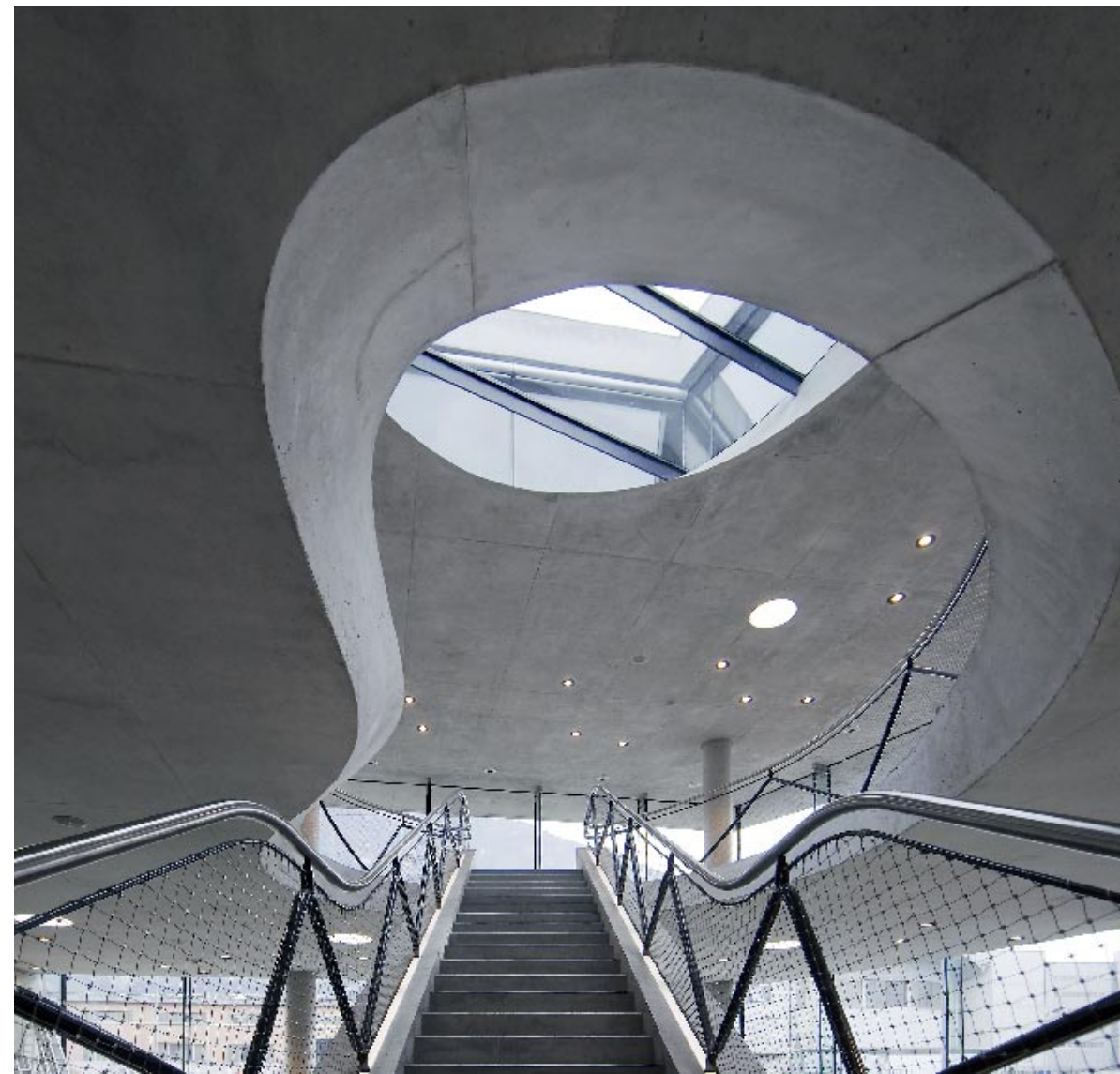


Blaas公司位于意大利Bolzano，是一家以电子机械生产为主的公司。在新的总部办公楼中展示了公司新的产品系列并设有维修服务部门。

大楼的第一层是销售区，第二层是展览区和修理部。所有的管理部门都位于三层。整个建筑结构给人一种单一的封闭之感。公共区域和办公区域之间隔着一个分隔墙，顾客从建筑外面可以清晰地看到这面墙。

北侧玻璃幕墙提供了可视性和透明度，使得展览区和销售区的面积最大化。如维修办公室、仓库和办事处等私人空间的外观都已暴露于南方、东方和西方，但受到了日光隔离系统的保护。

为了建立一个自然光、发展和空间规划的最优关系，设计师在大楼的中心创建了一个明亮的门廊和一个内部庭院。这个绿色的露天场地使得三楼的行政管理部可以收到充足的自然光，同时为工作人员提供了一个受保护的安静的休闲场所。





ATP Architects and Engineers

With more than 400 employees, ATP Architects and Engineers is one of the largest integrated design offices in Europe, specialising in integrated design of complex construction projects.

As an integrated design company ATP Architects and Engineers offer “from a single source” all necessary planning design services – from the project idea to the completed building. This culture of simultaneous and interdisciplinary cooperation is highly influenced by the fact that architects and engineers work alongside full time on specific projects over a period of years. ATP architects lead this Integrated Design Process. Their close cooperation with ATP engineers leads to innovations in all design phases which make a major contribution to the sustainable quality of the architecture of our buildings. ATP architects and engineers invest their experience and expertise in producing innovative, resource-saving and energy-optimised buildings of a higher aesthetic quality.



C. F. Møller Architects

C. F. Møller Architects is one of Scandinavia's oldest and largest architectural practices. Our work involves a wide range of expertise that covers programme analysis, town planning, master planning, all architectural services including landscape architecture, as well as the development and design of building components.

Simplicity, clarity and unpretentiousness, the ideals that have guided our work since the practice was established in 1924, are continually re-interpreted to suit individual projects, always site-specific and based on international trends and regional characteristics.

Over the years, we have won a large number of national and international competitions. Our work has been exhibited locally as well as internationally at places like RIBA in London, the Venice Biennale, and the Danish Cultural Institute in Beijing.

Today C. F. Møller Architects has app. 275 employees. Our head office is in Århus and we have branches in Copenhagen, Aalborg, Oslo, Stockholm and London, as well as a limited company in Iceland.



Projektil Architekti

The Projektil architekti studio was founded in 2002 by Roman Brychta, Adam Halíř, Petr Lešek, and Ondřej Hofmeister. The first implemented project was Sluňákov – Center for Ecological Activities. This building won the Grand Prix of Czech Architecture in 2007. The following project – building which was opened in September 2008 is the regional RESEARCH LIBRARY in Hradec Králové. The current implementation project is the National Technical Library in Prague which was opened in September 2009.

Projektil architects – a studio of four young architects - designs private and public buildings, urban plans, interior designs, and exhibition spaces. The architects are interested in innovations in typology and sustainable development. They invite experts, artists, scientists, and designers for cooperation on their projects.

The motto for the work of the studio is: team, openness, and interdisciplinary discussion.



Patrik Pedó and Juri Pobitzer

The architecture office monovolume has been working in the sector of architecture and design since 2003 piloting projects that go from urban design to interior design and furnishing.

The architects met at the faculty of architecture at the university of Innsbruck where they have already collaborated and worked together on projects. The participation at several national contests has given them the opportunity to carry out a number of successful projects which laid the foundation stone of the actual teamwork and the beginning of the mutual professional activity.

Our workplace becomes an innovative scene. How is it possible to create an innovative site and how do architecture and design react thereon? Engagement – the common object is the way to succeed. Complexity people who are faced with many impressions and opinions nowadays, need a well-linked mental activity which reduces complexity develops a sense for important factors and which is able to concentrate on synergies and contents.



Tony Owen

Tony Owen is the principle of Tony Owen Partners. A Sydney based practice with 15 staff. Tony graduated from the University of NSW with the University Medal and the Board of Architects Prize. He won the BHP Student Biennale national design prize twice in a row. Tony studied advanced architectural design at Columbia University in New York where he was awarded the graduation design prize. At Columbia University, Tony worked with some of the leaders in contemporary design philosophy including Steven Holl, Bernard Tschumi and Greg Lynn. Here he explored contemporary approaches to design focusing on complex urban issues of density, sustainability and infrastructure as well as utilising current computer and catia technology in design generation. Tony Owen Partners is exploring new modes of sustainable design using digital technology to respond to changing environmental conditions at a micro design scale.



Stanley Saitowitz

Stanley Saitowitz / Natoma Architects Inc. is committed to design excellence. The theoretical position establishes a particular concept for each project, giving unique measure to the specific program and site. The approach to design is considered "human geography", and is especially cogniscent of the relation of building and setting. The aim is to invent spaces of passionate quality.

STANLEY SAITOWITZ is PROFESSOR EMERITUS OF ARCHITECTURE at the University of California, Berkeley, and has taught at a number of schools including the GSD, Harvard University (Eliot Noyes Professor 1991/2), University of Okalahoma (Bruce Goff Professor, 1993), Southern California Institute of Architecture, UCLA, the University of Texas, the University of the Witwatersrand, Cornell, and Syracuse. He has lectured extensively in the USA and internationally.



Todd Saunders

Saunders Architecture is a firm owned by Canadian Todd Saunders who has lived and worked in Norway since 1997. Saunders has worked in countries such as Austria, Germany, Russia, and Latvia. Currently, the office is working mostly in Norway, and has projects in England, Denmark, Sweden, and Canada. The office consists of four architects from Canada, Germany and USA.

The work combines a Nordic design sensibility with environmental concerns. Each project is unique and inventive. Every project has a new process. This strategy derives from an ability to be inventive and to constantly question the purpose of our buildings. Depending upon the setting and the program, each building suggests a critique of urban planning, provides solutions to contemporary housing solutions, or creates sympathetic yet robust new forms for residential housing that are additions to the dramatic landscape in which they sit.

Adriana Sternberg & Mariano Kohen

Adamson Associates Architects is a leading architectural firm that provides design and management services to high profile clients and projects around the world. An office consolidation led to the Toronto office relocating to the historic McGregor sock factory on Wellington Street near Spadina. This preferred location on “architect’s row” and close to public transit reduces transportation time and associated impacts. The historic nature of the building, with its high ceilings and exposed wooden posts and beams, allowed for an open floor plan and interesting, creative office design. The office space is 3967m² located over four floors. The fit-up scope of Adamson’s space consisted of HVAC upgrades, complete electrical works including light fixtures and associated controls, architectural furnishings, finishes, and equipment.



Ilmari Lahdelma

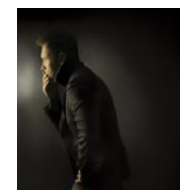
Architects Lahdelma & Mahlamäki Ltd. was founded in 1997 in Helsinki. The partners of the company are Professor Ilmari Lahdelma, and Professor Rainer Mahlamäki, both members of the SAFA (Finnish Architects Association).

The partners are working together since 1985, having previously worked together at Architects Company 8 Studio in Tampere and at Architects Kaira-Lahdelma-Mahlamäki, Helsinki.

Our team has extensive experience in all aspects of architecture: public buildings, residential buildings, renovation projects, urban planning as well as interior architecture and furniture design. Significant part of our work has started thru architectural competitions, in which the partners have received 35 first prizes (and 47 other prizes)! The latest winning competition entries are the Kastelli School competition in Oulu and the new Embassy of Finland in Tokyo.

Perkins Eastman

Perkins Eastman is among the top architecture and design firms in the world. The firm prides itself on inventive and passionate design that enhances the quality of the human experience. Because of its depth and range, Perkins Eastman takes on assignments from niche buildings to complex projects that enrich whole communities. The firm’s practice areas include education, housing, healthcare, senior living, corporate interiors, cultural institutions, public sector facilities, retail, office buildings, and urban design. Perkins Eastman provides award-winning design through its domestic offices in New York, NY; Boston, MA; Arlington, VA; Charlotte, NC; Chicago, IL; Oakland, CA; Pittsburgh, PA; and Stamford, CT; and internationally in Dubai, UAE; Guayaquil, Ecuador; Mumbai, India; Shanghai, China; and Toronto, Canada.



Cyrille Druar

Born 15th May 1980 in Paris
General studies until earning a Baccalaureate specialised in Fine Arts
Enters art school in 1999 -Does several internships and notably works on the renovation of Karl Lagerfeld’s fashion studio and the creation of villas.
Graduates from Esag-Penninghen in 2004 at the top of his class with a degree in Interior Architecture and Design
Creation of “Cyrille Druar” company in 2007, based in Paris
Opening of I-WAY in July 2008

Designer, Interior Architect, also passionate about Photography, Cyrille Druar excels in many fields. He grew up in an artistic environment, immersed in surrealism on his mother’s side, which has had a profound influence on his work and interest in the imaginary. His father, an industrial designer, exposed him to the technical side of the profession. A creator at heart, he strives to design modern, non-decorative environments, but with an underlying language and sense of wonder. Architecture thus becomes a platform for introspection.

Fjmt Studio

Fjmt offers services in architecture, landscape architecture, master planning and interior design. With a staff of more than 75 personnel, the fjmt architectural team has a wealth of architectural and technical capability to assist them as required. This includes specialists in Landscape Architecture, Interior Design, Urban Design, 3D Visualisation (all tertiary qualified) and a team of administration/non-architectural staff including a practice manager, graphic designers and IT support.

Fjmt’s team of professionals are proficient in, and aided by, the latest visualisation, communication and documentation technology. The practice has placed much emphasis on technology (computer hardware and software) to facilitate the design process. Accordingly, fjmt has the latest in CAD capability; designing and documenting using a fully transitioned 3D methodology (ArchiCAD) and the most powerful computer workstations and have an array of high-speed and large format colour printers.



Juergen Mayer H.

Founded in 1996 in Berlin, Germany, J. MAYER H. focuses on works at the intersection of architecture, communication and new technology. Recent projects include the Town Hall in Ostfildern, Germany, a student center at Karlsruhe University and the redevelopment of the Plaza de la Encarnación in Sevilla, Spain. From urban planning schemes and buildings to installation work and objects with new materials, the relationship between the human body, technology and nature form the background for a new production of space.

Juergen Mayer H. is founder and principal of this crossdisciplinary studio. He studied at Stuttgart University, The Cooper Union and at Princeton University. His work was published and exhibited worldwide and is part of international collections like the MoMA New York and SF MoMA. His work was awarded with numerous prizes. Juergen Mayer H. taught at Princeton University, University of the Arts Berlin, Harvard University, Kunsthochschule Berlin, the Architectural Association in London and is currently teaching at Columbia University in New York.



Archimedialab Bernd Lederle

Archimedialab is a full service architecture design laboratory aiming to combine unconventional spatial explorations with ecological and innovative technologies to create unique architectural solutions in all phases of the design and construction process. The main focus is on concept and design and construction of cultural and public institutions, hotels and conference facilities, housing, landscape design, urban planning and commercial design worldwide.



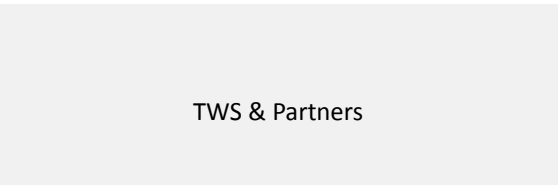
Sternberg Kohen Arquitectos

Sternberg Kohen Arquitectos studio was created in the year 2000 by architects Mariano Kohen and Adriana Sternberg. Since then, we have developed projects that embrace several thematic: collective and individual houses, buildings, hotels, retail, offices, booths for exhibitions and interior design. The staff is composed by a team of architects that work with dedication, providing innovative and creative solutions, to respond efficiently to our clients' requirements. We offer an integral service, solving all the stages of the project until the completion of the work. Our professional labor has given us the experience for making prefeasibility studies, architecture projects, work direction and construction. Our work premises are creativity in design, functionality and flexibility of the spaces, the quality of materials and constructive details and the fulfillment of the established terms and budgets, making our work our best presentation form, and the cause of a constant and sustained growth since our beginning.



Paul de Ruiter

In 1990 Paul de Ruiter (b. 1962, Rheden, The Netherlands) graduated cum laude from the Technical University Delft. In 1992 he started his research concerning energy efficient buildings. Before founding his own office in 1994 he worked with leading architectural offices in Canada, Australia and the Netherlands. In 1994 he founded Architectenbureau Paul de Ruiter b.v., an office that is keen on research in order to design buildings and towns in which people feel comfortable and safe, without prejudicing the environment and economic feasibility. Architectenbureau Paul de Ruiter just moved to a new sustainable office building it developed itself. He is now, among other things, working on the TNT Green Office, one of the most sustainable buildings in the Netherlands. Besides his design activities Paul de Ruiter works at a doctoral dissertation on climate active facades. He gives lectures, writes articles for professional journals and teaches at the Dutch technical universities.



TWS & Partners

TWS & Partners was established in 1998 in Indonesia. It is led by Tonny Wirawan Suriadajaja. Tonny Wirawan Suriadajaja was born in 30 January 1972, Jakarta, Indonesia, is an architect who always tries to find any innovation in architectural and design interior. May 1995 - July 1995 worked with Gunawan Tjahjono Ph.d to design National Museum in Korea July 1995 - November 1995 worked with Shimizu Lampiri Consultant at Jakarta as an Architect November 1995 - June 1998 worked with Ciputra Development at Jakarta as an Architect June 1998 - Present established TWS & Partners Design Team



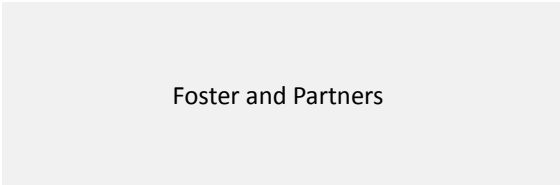
Kim Herforth

3XN was founded as Nielsen, Nielsen and Nielsen in Aarhus in 1986 by the architects Kim Herforth Nielsen, Lars Frank Nielsen (partner until 2002) and Hans Peter Svendler Nielsen (partner until 1992). The three Nielsen architects, often referred to as the Nielsens – and today simply as 3XN – quickly became known for two things: their preference for ground-breaking architecture, in defiance of the anti-humanistic modernism, and projects demanding a high level of detail and employing workmanship of the highest quality. 3XN became a limited liability company in 1995. The firm comprises of two offices each with a staff of 60 – one in Kystvejen in Aarhus, and one in Strandgade in Copenhagen. We work, however, as one practice continuously interchanging ideas and staff between the two offices. We operate in a project-oriented network structure, and at every stage we team up in workshops with partners, experts, users etc. At the workshop we discuss the results of our research, develop the concept and a framework for the design work.



Simone Micheli

Simone Micheli is a university contract professor. He founded the architectural studio with his name in 1990 and the design company "Simone Micheli Architectural Hero" in 2003. His works concerning architecture, contract, interior design, exhibit design, design, graphic and communication are strictly linked to the sensorial glorification. He is the curator of some experimental events for some of the most qualified international fairs. He shows his projects in the most important worldwide architecture and design exhibitions. He is the curator of some thematic "contract" exhibitions in the most important international fairs of this field. He represented Italian interior design taking part to the XXX Congresso Colombiano de Arquitectura in Baranquilla and participating at the International Conference of Architecture in Hanover; in 2008 he has signed the event called "La casa Italiana" for ICE and Fiera Verona in collaboration with Abitare il Tempo - Acropoli, at the MuBE (Brazilian Museum of Sculpture) in San Paolo.



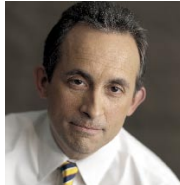
Foster and Partners

Foster + Partners is an architectural firm based in the United Kingdom. The practice is led by its founder and Chairman, Norman Foster, and has constructed many high-profile glass-and-steel buildings. Established by Norman Foster as Foster Associates in 1967 shortly after leaving Team 4, the firm was renamed in the 1990s to more accurately reflect the influence of the other lead architects. It is now a worldwide practice, with project offices in more than twenty countries. Over the past four decades the company has been responsible for a strikingly wide range of work, from urban masterplans, public infrastructure, airports, civic and cultural buildings, offices and workplaces to private houses and product design. Since its inception, the practice has received 470 awards and citations for excellence and has won more than 86 international and national competitions.



Olson Kundig Architects

Olson Kundig Architects began its creative existence with architect Jim Olson, whose work in the late 1960s explored the relationship between dwellings and the landscape they inhabit in the Northwest. Olson started the firm based on some simple ideas: that buildings can serve as a bridge between nature, culture and people, and that inspiring surroundings have a positive effect on people's lives. Rick Sundberg joined the firm in 1975, and its commitment to urbanism and civic life became evident as they began designing and developing modern urban buildings in and around Seattle's national historic districts Pike Place Market and Pioneer Square. In 1996, Tom Kundig joined Olson and Sundberg as an owner, taking the firm to another level of creative exploration and helping it grow into an office with an international reputation. Alan Maskin and Kirsten Murray joined the owners group in 2008, continuing the evolution of the firm.



CO Architects

Founded in 1986 as a regional office of San Francisco-based Anshen + Allen, we became an autonomous practice a decade later. In 2005, to acknowledge the evolution of our firm, we formally changed our name from Anshen + Allen Los Angeles to CO Architects. Our new name is intended to evoke our collaborative approach to determining the strategic needs of each project and the coherence we seek in our built work. These fundamental aspects of our firm remain unchanged, along with the active presence of our longtime senior partners, our 85+member staff and the nature of the work we do. We are nationally recognized experts in academic, research lab and healthcare planning and design. Throughout our history, we have maintained that technical systems, planning, documentation and project management are all integrally important in the service of design. Numerous awards attest to our reputation for elegant solutions to the demands of complex projects.



Concrete Architectural Associates

Concrete Architectural Associates is founded in 1997 by Rob Wagemans, Gilian Schrofer and Erik van Dillen. They met each other by a not realized project, a head office in Amsterdam for Cirque du Soleil. Rob Wagemans (present director), born in Eindhoven on 13th of February 1973. History of education: Master of Architecture, Academy of Architecture in Amsterdam. Erik van Dillen (at this moment he is just creatively involved with Concrete), born in de Bilt on 27th of April 1960. History of education: interior architect, Rietveld academy, catering industry skills in the kitchen, painting restorer. Gilian Schrofer left concrete in 2004 to start his own company. Concrete Reinforced is founded in 2006 by Rob Wagemans and Erikjan Vermeulen. Reinforced is responsible for architecture and urban landscaping and enriches concrete with its disciplines. Erikjan Vermeulen (present co-director), born in Texel on the 2nd of April 1973. History of education: Master of Architecture, Academy of Architecture in Amsterdam. Worked for different architects to start his own company in 2003.



Goedele Desmet, Ivo Vanhamme, Jean-Michel Culas

Architecten Bob361 architectes, is an architecture office run by Goedele Desmet, Ivo Vanhamme and Jean-Michel Culas. There are 2 offices. One in Brussel and one in Paris. Awards 2006 Leuven, 17 social houses Heidebergstraat, Belgian Building, Awards, Nomination 2005 Borgerhout, Hydraulic Laboratorium, Welstandsprijs, Nomination 2004 Borgerhout, Hydraulic Laboratorium, Steel Construction Award, Award for a Renovation Project 2004 Hydraulic Laboratorium, Borgerhout, Prix Georges Hens de l'Academie Royal de Belgique, nomination 2001 Linden, addition to the CLP house, Renospecto Architectural Award, Nomination 2000 Lebbeke, 4 patio-houses, European Award Luigi Cosenza, Special Mention 1999 Lebbeke, 4 patio-houses, Award of the Belgian Architecture 1998 Leuven, addition to the MC house, Architectural Award of the City of Leuven 1996 Paris, renovation Cavalerie apartment, Architectural Awards, Special Mention



Doriana & Massimiliano Fuksas

Native of Lithuania, Massimiliano Fuksas was born in Rome in 1944, where he graduated in Architecture at "La Sapienza" University in 1969. In 1967 he created his own studio in Rome, followed by a second one in Paris in 1989. He opened an office in Vienna in 1993, and in Frankfurt in 2002, active until 2001 and 2009. From 2008 he has an office also in Shenzhen, China. He was Visiting Professor at several universities. For many years he has been devoting special attentions into urban problems in large metropolitan areas. Doriana O. Mandrelli was born in Rome where she graduated in History of Modern and Contemporary Architecture in 1979 at "La Sapienza" University. Since 1985 she has been cooperating with Massimiliano Fuksas. Since 1997 she has been responsible for Fuksas Design. She was the curator of the Architecture's Section at the VII Biennial of Architecture in Venice (2000), she was in charge of four special branches. Her projects are characterized by a continuous research in new materials and innovative technology. They work and live between Rome and Paris.



Pieta Linda

Pieta Linda Auttila (b. 1974) is an interior architect who graduated from the University of Art and Design Helsinki in the spring of 2009. Auttila has gained life experience and understanding by living in several countries and working in numerous professions around the world. Her work history includes working in a travel agency as an inquirer looking for unspoilt future tourist resorts as well as jobs in modern, experimental design agencies. The countries she has lived in include Spain, Turkey and Greece. At times Auttila has led the life of a nomad with the tribes wandering on the shores of the Black Sea. Rather than proceeding in a systematic, goal-oriented way, she has intuitively hurled herself into new projects. Auttila avoids stagnation. She wants to keep moving and make discoveries on the way. Greece is also the site of Auttila's thesis. Mensen Apartamentos is a building complex for three apartments on a high mountain ascent in southern Crete. The thesis includes, alongside with the architecture, the material choices, solid furniture design and other out and indoors aesthetic and functional solutions. The WISA Wooden Design Hotel is Pieta Linda Auttila's first work made entirely of wood. In the competition she was especially attracted by the variations and possibilities of one material.



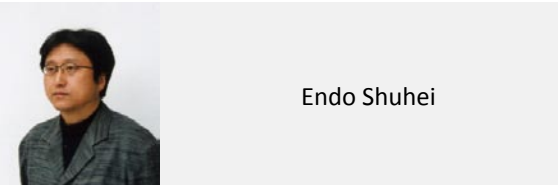
Daniel Libeskind

Daniel Libeskind is the Principal Design Architect in Studio Daniel Libeskind and solely responsible for all design decisions. Every project is developed with a consistent core team, which works together throughout the design process toward the eventual realization of the project. Within the Studio, teams are set up in individual project rooms and great emphasis is placed on working together. The proximity of the different team members ensures communication on a daily design development basis. Studio Daniel Libeskind operates with thoroughly integrated teams, where team members assume a high degree of responsibility for ensuring that the project management function is there to support and serve the primary creative design function. There is a clear reporting structure within the team. Design and planning issues are sketched by Mr. Libeskind, alternatives drawn up by the team, discussed and reworked with Mr. Libeskind through regular internal presentations which act as in-house critiques and then reworked until the solution is agreed upon by him. The Project Architects coordinate the work of the team and maintain continual design contact and development with Daniel Libeskind ensuring the ongoing quality of the work in the well-recognized Studio tradition.



Antonio Vaíllo i Daniel - Juan L. Irigaray Huarte

ANTONIO VAILLO i DANIEL, ARCHITECT, (BARCELONA, 1960) 1979-1985 Architectural Studies in ETSA University of Navarra. JUAN LUIS IRIGARAY HUARTE, ARCHITECT, (NAVARRA, 1956) 1974-1980 Architectural Studies in ETSA University of Navarra. COMPETITIONS AND PRIZES (only list some of them) 2010 First Prize. Archizinc Awards. B3 House. Pamplona First Prize. COAVN Awards. Lounge MS. Cadreita First Prize. Restricted competition 2009 Gold Medal. Miami Beach 2009 Bienal. Interior Design. D Jewellery Shop. Pamplona First Prize. Restricted competition First Prize. Interior FAD'09 Opinion Award. Elmerca'o Restaurant. Pamplona TOP 50 Interior of Spain 2009. Convened by VIA Group 2008 First Prize. Restricted competition First Prize. Interior FAD'08



Endo Shuhei

PROFILE 1960 Born in Japan 1986 Obtained a master's degree at Kyoto City University of Art 1988 Established Shuhei Endo Architect Institute 2004 Professor at Salzbulg Summer Academy Currently professor at Graduate School of Kobe University AWARD 2000 Third Millennium International competition of ideas la Biennale di Venezia, 1st prix, Italy ar+d award 2000, Grand Prix, England 2001 Premio Internazionale di Architettura Francesco Borromini , Italy 2002 8th Public Architecture Award, Japan 2003 Kenneth F. Brown Asia Pacific Culture and Architecture Design Award, Grand Prix, U.S.A Education Minister's Art Encouragement Prize for Freshmans, Japan 2004 9th International Architecture Exhibition Special Award la Biennale di Venezia 2004, Italy 2005 Architecture and Design for Children International Award 2005, UK BSC Awards, Japan 2006 Annual Architectural Design Commendation, Japan 2007 Osaka Architectural Award, Japan 2008 ARCASIA Award Gold medal, Sri Lanka 2009 Green Good Design Award, Chicago 2009 ARCHIP Architectural Award, Moscow

后 记

本书的编写离不开各位设计师和摄影师的帮助，正是有了他们专业而负责的工作态度，才有了本书的顺利出版。参与本书编写的人员有：Antonio Vaillou i Daniel, Juan Luis Irigaray Huarte, David Eguinoa, Bernd Lederle, Wolfgang Heckmann, Tina Kierzek, Tilo Weber, Katharina Schneider, Jonas Beer, Achim Zumpfe, Paul de Ruiter, Patrik Pedo, Juri Pobitzer, C. F. Møller Architects, Cyrille Druar, Daniel Libeskind, Richard Francis-Jones, Stanley Saitowitz, Projektil Architekti, Doriana & Massimiliano Fuksas, Goedele Desmet, Ivo Vanhamme, Jean-Michel Culas, Jim Olson, Stephen Yamada-Heidner, John Kennedy, Olivier Landa, William Franklin, Megan Zilmerman, Michael Picard, Debbie Kennedy, Cristina Acevedo, Scott Kelsey, Jorge de la Cal, Fabian Kremkus, Neil Kaye, Markus Bischoff, John Winder, Derrick Chan, Adamson Associate Architects, Andrei Florian, Juergen Mayer H., MarcusBlum, Jan-Christoph Stoeckbrand, Wojciech Witek, Magdalena Skoplak-Seweryn, Jakub Kaczmarczyk, Pieta Linda, TWS & Partners, Simone Micheli, Rob Wagemans, Erikjan Vermeulen, Jeroen Vester, Sander Vredeveld, Matthijs Hombergen, Julian Weyer, Kessler & Kremer, Michael van Osten, Kim Herforth, Perkins Eastman, Foster and Partners, Nigel Dancey, Iwan Jones, Dominik Hauser, Rachel MacIntyre, Adrian Nicholas, Declan Sharkey, Stefan Unnewehr, Pietjy Witt, Endo Shuhei, Tony Owen, Roman Brychta, Adam Halir, Petr Leseck, Ondrej Hofmeister, Ilmari Lahdelma, Todd Saunders, SAMARK Arkitektur & Design., Jose M. Cutillas, Pedro Pegenaute, Daniel Galar, Oskar Riz, Bitter Brecht Fotografie, Michele Nastasi, John Gollings, Andrew Chung, Mathieu Faliu等。